

## Product datasheet for **TA321568**

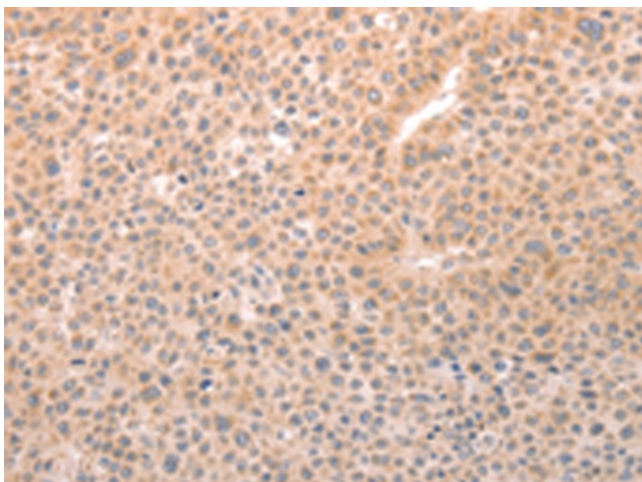
### TRPC3 Rabbit Polyclonal Antibody

#### Product data:

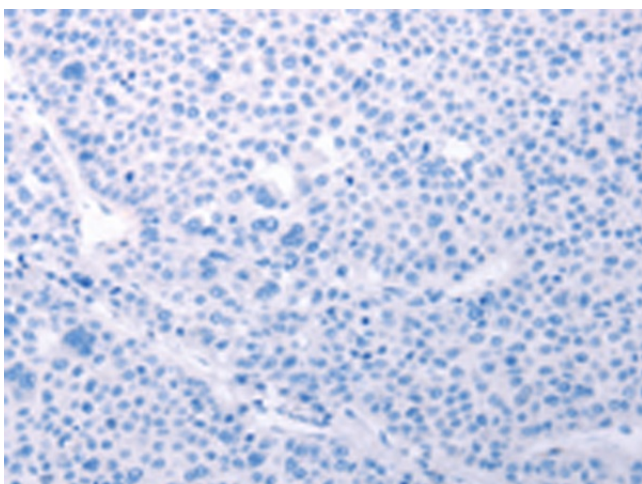
Product Type:	Primary Antibodies
Applications:	IHC
Recommended Dilution:	IHC: 50-200 Positive control: Human liver cancer Predicted cell location: Cytoplasm
Reactivity:	Human, Mouse, Rat
Host:	Rabbit
Isotype:	IgG
Clonality:	Polyclonal
Immunogen:	Synthetic peptide corresponding to a region derived from 823-836 amino acids of human transient receptor potential cation channel, subfamily C, member 3
Formulation:	PBS pH7.3, 0.05% NaN <sub>3</sub> , 50% glycerol
Concentration:	lot specific
Purification:	Antigen affinity purification
Conjugation:	Unconjugated
Storage:	Store at -20°C as received.
Stability:	Stable for 12 months from date of receipt.
Gene Name:	transient receptor potential cation channel subfamily C member 3
Database Link:	<a href="#">NP_003296</a> <a href="#">Entrez Gene 22065 Mouse</a> <a href="#">Entrez Gene 60395 Rat</a> <a href="#">Entrez Gene 7222 Human</a> <a href="#">Q13507</a>
Background:	The protein encoded by this gene is a membrane protein that can form a non-selective channel permeable to calcium and other cations. The encoded protein appears to be induced to form channels by a receptor tyrosine kinase-activated phosphatidylinositol second messenger system and also by depletion of intracellular calcium stores. Two transcript variants encoding different isoforms have been found for this gene.
Synonyms:	SCA41; TRP3
Protein Families:	Druggable Genome, Ion Channels: Transient receptor potential, Transmembrane



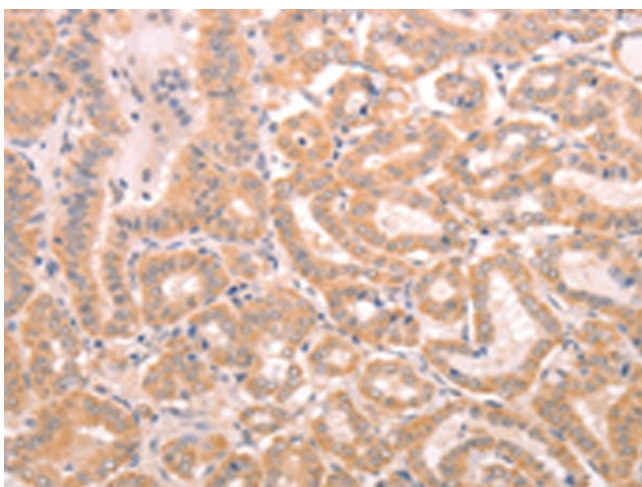
[View online »](#)

**Product images:**

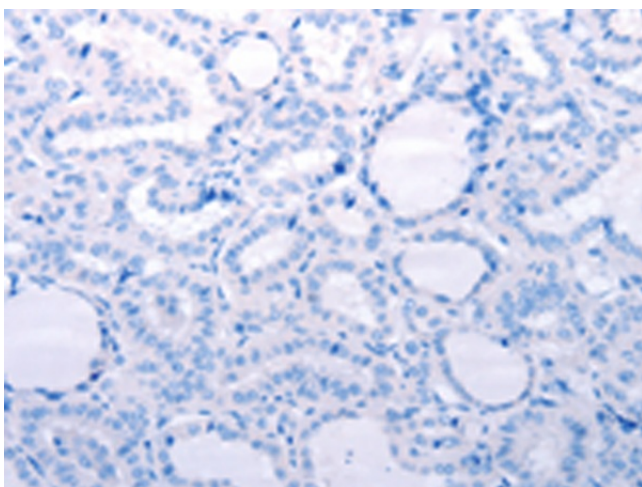
Immunohistochemistry of paraffin-embedded Human liver cancer tissue using TA321568 (TRPC3 Antibody) at dilution 1/50 (Original magnification:  $\times 200$ )



Immunohistochemistry of paraffin-embedded Human liver cancer tissue using TA321568 (TRPC3 Antibody) at dilution 1/50, treated with synthetic peptide. (Original magnification:  $\times 200$ )



Immunohistochemistry of paraffin-embedded Human thyroid cancer tissue using TA321568 (TRPC3 Antibody) at dilution 1/50 (Original magnification:  $\times 200$ )



Immunohistochemistry of paraffin-embedded Human thyroid cancer tissue using TA321568 (TRPC3 Antibody) at dilution 1/50, treated with synthetic peptide. (Original magnification:  $\times 200$ )