

Product datasheet for **TA321567**

Troponin C1 (TNNC1) Rabbit Polyclonal Antibody

Product data:

Product Type:	Primary Antibodies
Applications:	WB
Recommended Dilution:	WB: 1:500-2000
Reactivity:	Human, Mouse, Rat
Host:	Rabbit
Isotype:	IgG
Clonality:	Polyclonal
Immunogen:	Full length fusion protein
Formulation:	PBS pH7.3, 0.05% NaN ₃ , 50% glycerol
Concentration:	lot specific
Purification:	Antigen affinity purification
Conjugation:	Unconjugated
Storage:	Store at -20°C as received.
Stability:	Stable for 12 months from date of receipt.
Predicted Protein Size:	18 kDa
Gene Name:	troponin C1, slow skeletal and cardiac type
Database Link:	NP_003271 Entrez Gene 21924 MouseEntrez Gene 290561 RatEntrez Gene 7134 Human P63316

Background: Troponin, working in conjunction with tropomyosin, functions as a molecular switch, regulating muscle contraction in response to changes in the intracellular Ca²⁺ concentration. Troponin consists of three subunits: the Ca²⁺-binding subunit troponin C (TnC), the tropomyosin-binding subunit troponin T (TnT), and the inhibitory subunit troponin I (TnI). In response to β -adrenergic stimulation of the heart, Ser23 and Ser24 of TnI (cardiac) are phosphorylated by PKA and PKC. This phosphorylation stimulates a conformational change of the regulatory domain of TnC, reduces the association between TnI and TnC, and decreases myofilament Ca²⁺ sensitivity by reducing the Ca²⁺ binding affinity of TnC.

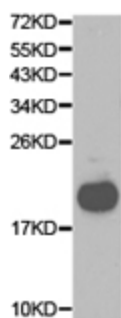
Synonyms: CMD1Z; CMH13; TN-C; TNC; TNNC



[View online »](#)

Protein Pathways: Calcium signaling pathway, Cardiac muscle contraction, Dilated cardiomyopathy, Hypertrophic cardiomyopathy (HCM)

Product images:



Predicted band size: 18 kDa. Positive control: Stomach tissue lysate. Recommended dilution: 1/500-2000. (Gel: 12%SDS-PAGE Lysate: 40 ug Primary antibody: 1/500 dilution Secondary antibody: Goat anti Rabbit IgG - H&L (HRP) at 1/10000 dilution Exposure time: 1 minute)