

## Product datasheet for **TA321565S**

### TIMP4 Rabbit Polyclonal Antibody

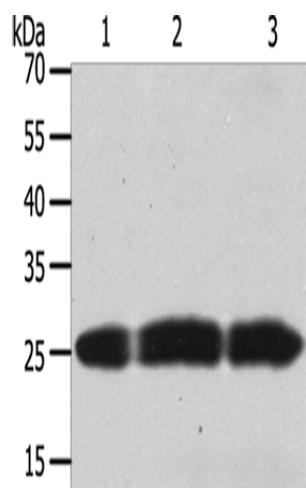
#### Product data:

Product Type:	Primary Antibodies
Applications:	WB
Recommended Dilution:	WB: 200-1000 WB positive control: Human brain tissue, PC3 and hela cells
Reactivity:	Human, Mouse, Rat
Host:	Rabbit
Isotype:	IgG
Clonality:	Polyclonal
Immunogen:	Fusion protein corresponding to a region derived from 30-224 amino acids of human TIMP metalloproteinase inhibitor 4
Formulation:	PBS pH7.3, 0.05% NaN <sub>3</sub> , 50% glycerol
Purification:	Antigen affinity purification
Conjugation:	Unconjugated
Storage:	Store at -20°C as received.
Stability:	Stable for 12 months from date of receipt.
Predicted Protein Size:	26 kDa
Gene Name:	TIMP metalloproteinase inhibitor 4
Database Link:	<a href="#">NP_003247</a> <a href="#">Entrez Gene 110595</a> <a href="#">MouseEntrez Gene 680130</a> <a href="#">RatEntrez Gene 7079</a> <a href="#">Human Q99727</a>
Background:	This gene belongs to the TIMP gene family. The proteins encoded by this gene family are inhibitors of the matrix metalloproteinases; a group of peptidases involved in degradation of the extracellular matrix. The secreted; netrin domain-containing protein encoded by this gene is involved in regulation of platelet aggregation and recruitment and may play role in hormonal regulation and endometrial tissue remodeling.
Synonyms:	TIMP metalloproteinase inhibitor 4; tissue inhibitor of metalloproteinase 4
Protein Families:	Druggable Genome, Secreted Protein



[View online »](#)

## Product images:



Gel: 8+12%SDS-PAGE

Lysate: 50  $\mu$ g

Lane 1-3: Human brain tissue

PC3 cells

hela cells

Primary antibody: [TA321565] (TIMP4 Antibody)  
at dilution 1/200

Secondary antibody: Goat anti rabbit IgG at  
1/8000 dilution

Exposure time: 30 seconds