

Product datasheet for **TA321565**

TIMP4 Rabbit Polyclonal Antibody

Product data:

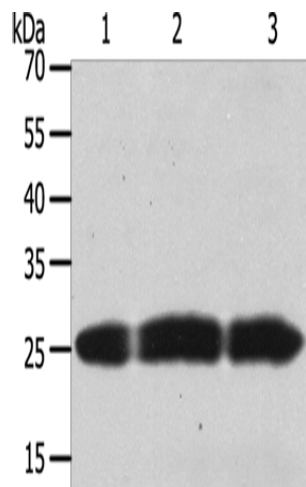
Product Type:	Primary Antibodies
Applications:	WB
Recommended Dilution:	WB: 200-1000 WB positive control: Human brain tissue, PC3 and hela cells
Reactivity:	Human, Mouse, Rat
Host:	Rabbit
Isotype:	IgG
Clonality:	Polyclonal
Immunogen:	Fusion protein corresponding to a region derived from 30-224 amino acids of human TIMP metalloproteinase inhibitor 4
Formulation:	PBS pH7.3, 0.05% NaN ₃ , 50% glycerol
Concentration:	lot specific
Purification:	Antigen affinity purification
Conjugation:	Unconjugated
Storage:	Store at -20°C as received.
Stability:	Stable for 12 months from date of receipt.
Predicted Protein Size:	26 kDa
Gene Name:	TIMP metalloproteinase inhibitor 4
Database Link:	NP_003247 Entrez Gene 110595 Mouse Entrez Gene 680130 Rat Entrez Gene 7079 Human Q99727
Background:	This gene belongs to the TIMP gene family. The proteins encoded by this gene family are inhibitors of the matrix metalloproteinases; a group of peptidases involved in degradation of the extracellular matrix. The secreted; netrin domain-containing protein encoded by this gene is involved in regulation of platelet aggregation and recruitment and may play role in hormonal regulation and endometrial tissue remodeling.
Synonyms:	TIMP metalloproteinase inhibitor 4; tissue inhibitor of metalloproteinase 4



[View online »](#)

Protein Families: Druggable Genome, Secreted Protein

Product images:



Gel: 8+12%SDS-PAGE

Lysate: 50 µg

Lane 1-3: Human brain tissue

PC3 cells

hela cells

Primary antibody: TA321565 (TIMP4 Antibody) at dilution 1/200

Secondary antibody: Goat anti rabbit IgG at 1/8000 dilution

Exposure time: 30 seconds