

Product datasheet for **TA321564S**

TIMP4 Rabbit Polyclonal Antibody

Product data:

Product Type:	Primary Antibodies
Applications:	IHC, WB
Recommended Dilution:	WB: 200-1000 WB positive control: Human brain tissue, PC3 and hela cells IHC: 15-50 Positive control: Human thyroid cancer Predicted cell location: Cytoplasm
Reactivity:	Human, Mouse, Rat
Host:	Rabbit
Isotype:	IgG
Clonality:	Polyclonal
Immunogen:	Fusion protein corresponding to a region derived from 30-224 amino acids of human TIMP metalloproteinase inhibitor 4
Formulation:	PBS pH7.3, 0.05% NaN ₃ , 50% glycerol
Purification:	Antigen affinity purification
Conjugation:	Unconjugated
Storage:	Store at -20°C as received.
Stability:	Stable for 12 months from date of receipt.
Predicted Protein Size:	26 kDa
Gene Name:	TIMP metalloproteinase inhibitor 4
Database Link:	NP_003247 Entrez Gene 110595 Mouse Entrez Gene 680130 Rat Entrez Gene 7079 Human Q99727
Background:	This gene belongs to the TIMP gene family. The proteins encoded by this gene family are inhibitors of the matrix metalloproteinases; a group of peptidases involved in degradation of the extracellular matrix. The secreted; netrin domain-containing protein encoded by this gene is involved in regulation of platelet aggregation and recruitment and may play role in hormonal regulation and endometrial tissue remodeling.

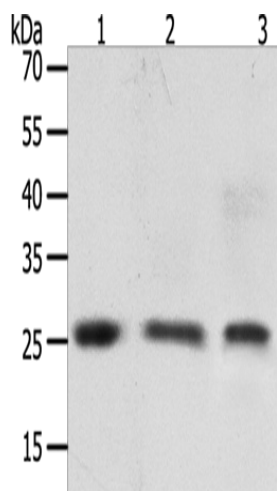


[View online »](#)

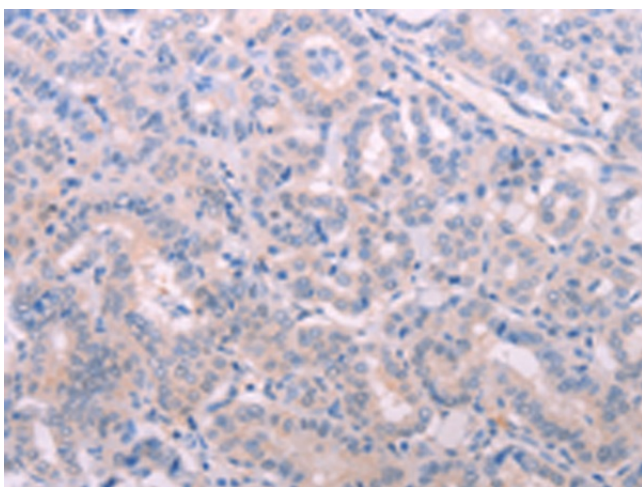
Synonyms: TIMP metalloproteinase inhibitor 4; tissue inhibitor of metalloproteinase 4

Protein Families: Druggable Genome, Secreted Protein

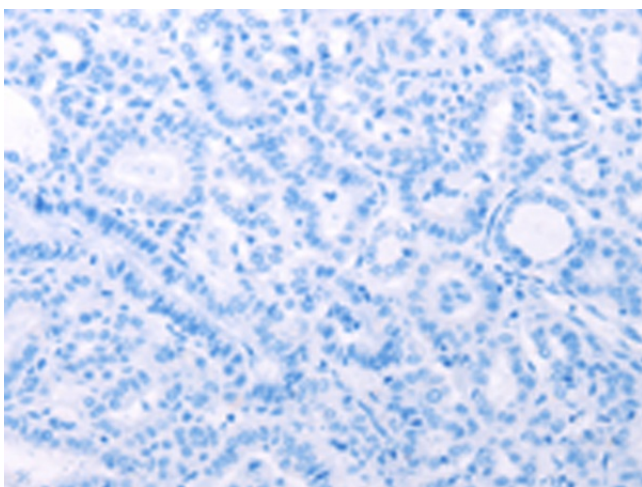
Product images:



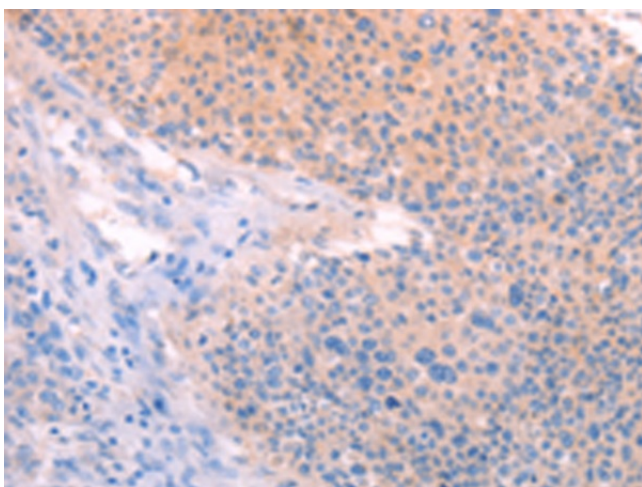
Gel: 8+12%SDS-PAGE
Lysate: 50 µg
Lane 1-3: Human brain tissue
PC3 cells
hela cells
Primary antibody: [TA321564] (TIMP4 Antibody)
at dilution 1/200
Secondary antibody: Goat anti rabbit IgG at
1/8000 dilution
Exposure time: 30 seconds



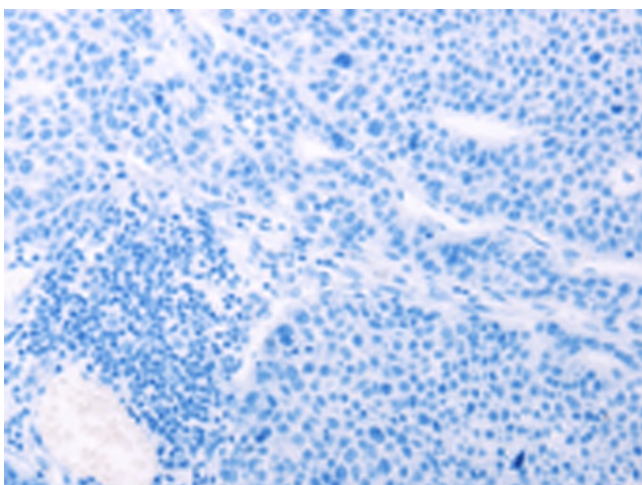
Immunohistochemistry of paraffin-embedded
Human thyroid cancer tissue using [TA321564]
(TIMP4 Antibody) at dilution 1/15 (Original
magnification: ×200)



Immunohistochemistry of paraffin-embedded Human thyroid cancer tissue using [TA321564] (TIMP4 Antibody) at dilution 1/15, treated with fusion protein. (Original magnification: $\times 200$)



Immunohistochemistry of paraffin-embedded Human liver cancer tissue using [TA321564] (TIMP4 Antibody) at dilution 1/15 (Original magnification: $\times 200$)



Immunohistochemistry of paraffin-embedded Human liver cancer tissue using [TA321564] (TIMP4 Antibody) at dilution 1/15, treated with fusion protein. (Original magnification: $\times 200$)