

Product datasheet for **TA321564**

TIMP4 Rabbit Polyclonal Antibody

Product data:

| | |
|-------------------------|---|
| Product Type: | Primary Antibodies |
| Applications: | IHC, WB |
| Recommended Dilution: | WB: 200-1000 WB positive control: Human brain tissue, PC3 and hela cells IHC: 15-50 Positive control: Human thyroid cancer Predicted cell location: Cytoplasm |
| Reactivity: | Human, Mouse, Rat |
| Host: | Rabbit |
| Isotype: | IgG |
| Clonality: | Polyclonal |
| Immunogen: | Fusion protein corresponding to a region derived from 30-224 amino acids of human TIMP metalloproteinase inhibitor 4 |
| Formulation: | PBS pH7.3, 0.05% NaN ₃ , 50% glycerol |
| Concentration: | lot specific |
| Purification: | Antigen affinity purification |
| Conjugation: | Unconjugated |
| Storage: | Store at -20°C as received. |
| Stability: | Stable for 12 months from date of receipt. |
| Predicted Protein Size: | 26 kDa |
| Gene Name: | TIMP metalloproteinase inhibitor 4 |
| Database Link: | NP_003247 Entrez Gene 110595 Mouse Entrez Gene 680130 Rat Entrez Gene 7079 Human Q99727 |



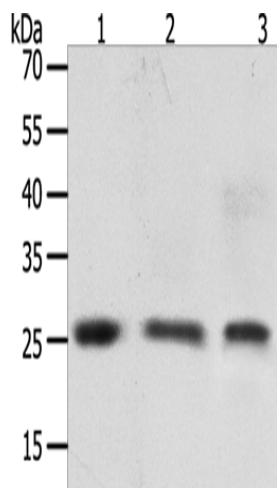
[View online »](#)

Background: This gene belongs to the TIMP gene family. The proteins encoded by this gene family are inhibitors of the matrix metalloproteinases; a group of peptidases involved in degradation of the extracellular matrix. The secreted; netrin domain-containing protein encoded by this gene is involved in regulation of platelet aggregation and recruitment and may play role in hormonal regulation and endometrial tissue remodeling.

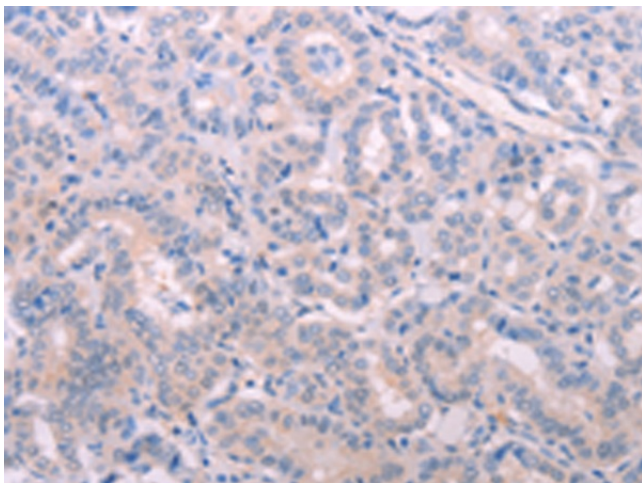
Synonyms: TIMP metalloproteinase inhibitor 4; tissue inhibitor of metalloproteinase 4

Protein Families: Druggable Genome, Secreted Protein

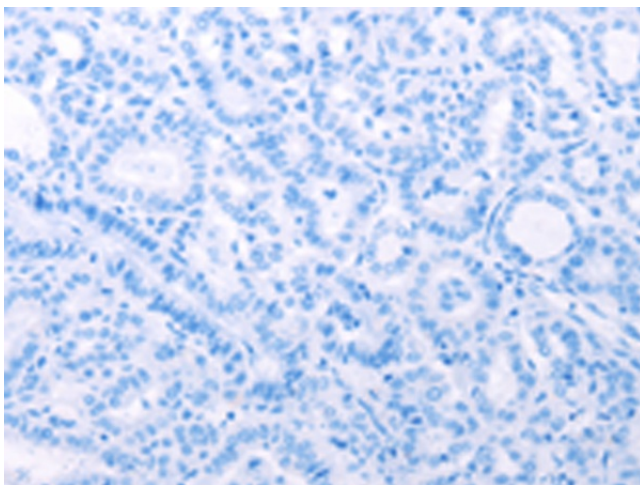
Product images:



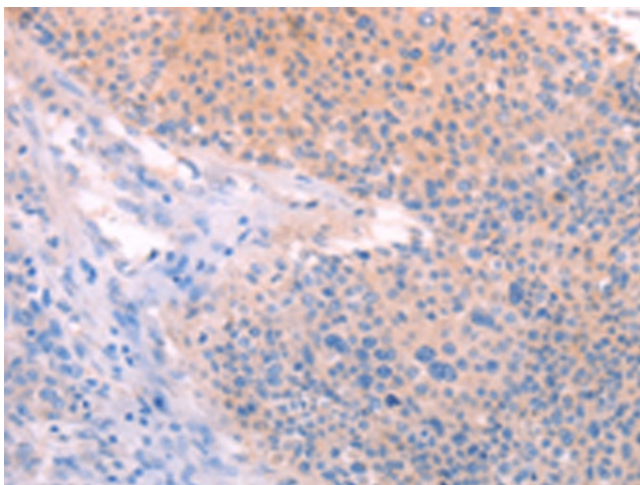
Gel: 8+12%SDS-PAGE
Lysate: 50 μ g
Lane 1-3: Human brain tissue
PC3 cells
hela cells
Primary antibody: TA321564 (TIMP4 Antibody) at dilution 1/200
Secondary antibody: Goat anti rabbit IgG at 1/8000 dilution
Exposure time: 30 seconds



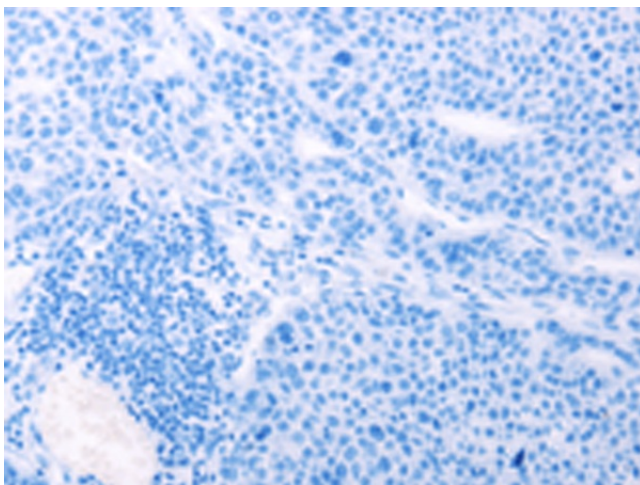
Immunohistochemistry of paraffin-embedded Human thyroid cancer tissue using TA321564 (TIMP4 Antibody) at dilution 1/15 (Original magnification: \times 200)



Immunohistochemistry of paraffin-embedded Human thyroid cancer tissue using TA321564 (TIMP4 Antibody) at dilution 1/15, treated with fusion protein. (Original magnification: $\times 200$)



Immunohistochemistry of paraffin-embedded Human liver cancer tissue using TA321564 (TIMP4 Antibody) at dilution 1/15 (Original magnification: $\times 200$)



Immunohistochemistry of paraffin-embedded Human liver cancer tissue using TA321564 (TIMP4 Antibody) at dilution 1/15, treated with fusion protein. (Original magnification: $\times 200$)