

Product datasheet for **TA321563**

ADAM17 Rabbit Polyclonal Antibody

Product data:

Product Type:	Primary Antibodies
Applications:	IHC, WB
Recommended Dilution:	WB: 500-2000 WB positive control: Jurkat, Raji, HeLa, K562, 293T cell lysates IHC: 50-200 Positive control: Human breast cancer Predicted cell location: Cytoplasm and Cell membrane
Reactivity:	Human, Mouse, Rat
Host:	Rabbit
Isotype:	IgG
Clonality:	Polyclonal
Immunogen:	Full length fusion protein
Formulation:	PBS pH7.3, 0.05% NaN ₃ , 50% glycerol
Concentration:	lot specific
Purification:	Antigen affinity purification
Conjugation:	Unconjugated
Storage:	Store at -20°C as received.
Stability:	Stable for 12 months from date of receipt.
Gene Name:	ADAM metallopeptidase domain 17
Database Link:	NP_003174 Entrez Gene 11491 MouseEntrez Gene 57027 RatEntrez Gene 6868 Human P78536



[View online »](#)

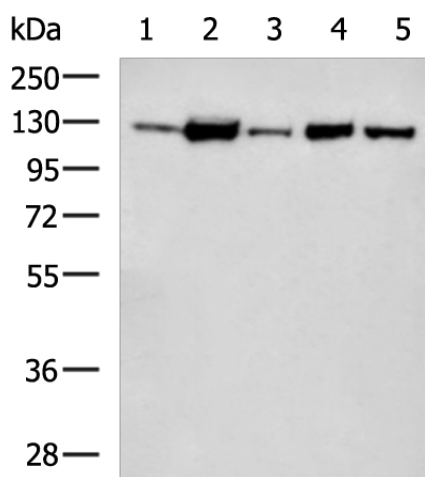
Background: This gene encodes a member of the ADAM (a disintegrin and metalloprotease domain) family. Members of this family are membrane-anchored proteins structurally related to snake venom disintegrins, and have been implicated in a variety of biologic processes involving cell-cell and cell-matrix interactions, including fertilization, muscle development, and neurogenesis. The protein encoded by this gene functions as a tumor necrosis factor-alpha converting enzyme; binds mitotic arrest deficient 2 protein; and also plays a prominent role in the activation of the Notch signaling pathway.?

Synonyms: ADAM18; CD156B; CSVP; NISBD; NISBD1; TACE

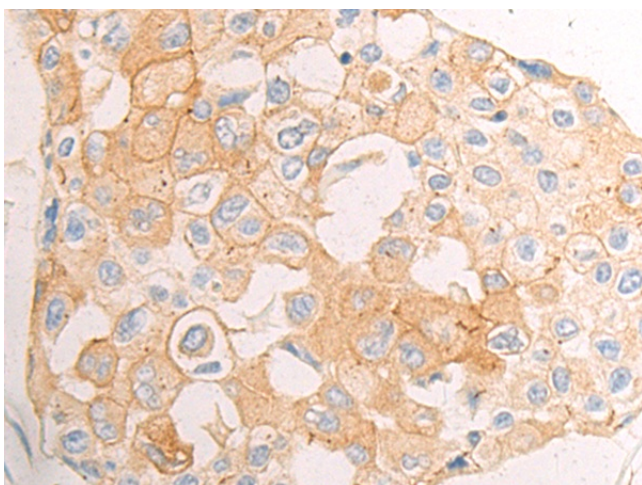
Protein Families: Druggable Genome, Protease, Transmembrane

Protein Pathways: Alzheimer's disease, Epithelial cell signaling in Helicobacter pylori infection, Notch signaling pathway

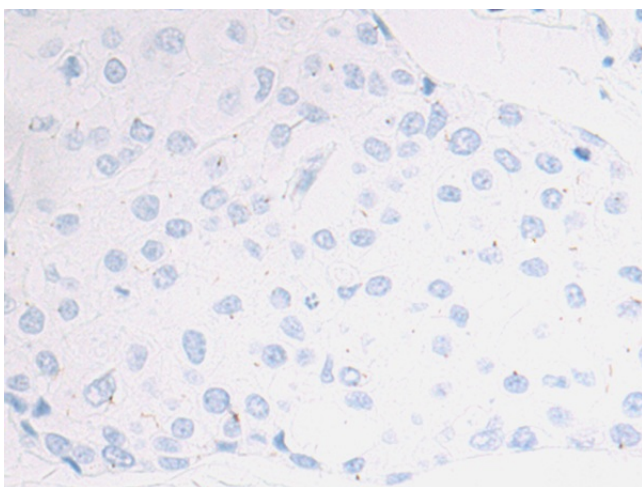
Product images:



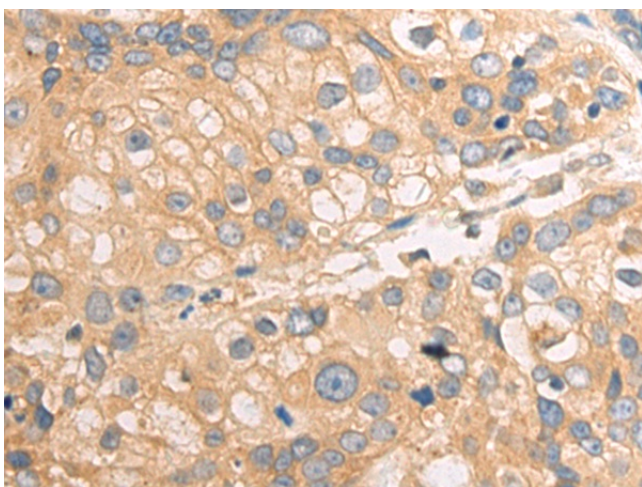
Gel: 8%SDS-PAGE
 Lysate: 40 µg
 Lane 1-5: Jurkat
 Raji
 HeLa
 K562
 293T cell lysates
 Primary antibody: TA321563 (ADAM17 Antibody) at dilution 1/550
 Secondary antibody: Goat anti rabbit IgG at 1/5000 dilution
 Exposure time: 90 seconds



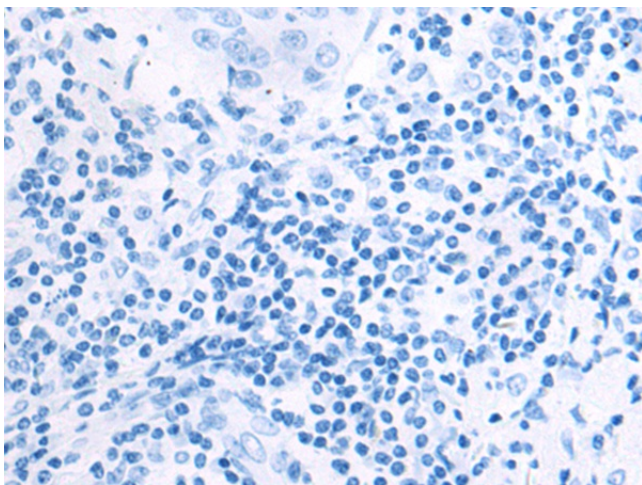
Immunohistochemistry of paraffin-embedded Human breast cancer tissue using TA321563 (ADAM17 Antibody) at dilution 1/50 (Original magnification: ×200)



Immunohistochemistry of paraffin-embedded Human breast cancer tissue using TA321563 (ADAM17 Antibody) at dilution 1/50, treated with fusion protein. (Original magnification: $\times 200$)



Immunohistochemistry of paraffin-embedded Human cervical cancer tissue using TA321563 (ADAM17 Antibody) at dilution 1/50 (Original magnification: $\times 200$)



Immunohistochemistry of paraffin-embedded Human cervical cancer tissue using TA321563 (ADAM17 Antibody) at dilution 1/50, treated with fusion protein. (Original magnification: $\times 200$)