

## Product datasheet for **TA321562**

### SSB Rabbit Polyclonal Antibody

#### Product data:

Product Type:	Primary Antibodies
Applications:	IHC
Recommended Dilution:	IHC: 50-200 Positive control: Human colon cancer Predicted cell location: Nucleus
Reactivity:	Human, Mouse, Rat
Host:	Rabbit
Isotype:	IgG
Clonality:	Polyclonal
Immunogen:	Synthetic peptide corresponding to a region derived from 100-105 amino acids of human Sjogren syndrome antigen B (autoantigen La)
Formulation:	PBS pH7.3, 0.05% NaN <sub>3</sub> , 50% glycerol
Concentration:	lot specific
Purification:	Antigen affinity purification
Conjugation:	Unconjugated
Storage:	Store at -20°C as received.
Stability:	Stable for 12 months from date of receipt.
Gene Name:	Sjogren syndrome antigen B
Database Link:	<a href="#">NP_003133</a> <a href="#">Entrez Gene 20823 Mouse</a> <a href="#">Entrez Gene 81783 Rat</a> <a href="#">Entrez Gene 6741 Human</a> <a href="#">P05455</a>
Background:	The protein encoded by this gene is involved in diverse aspects of RNA metabolism; including binding and protecting poly(U) termini of nascent RNA polymerase III transcripts from exonuclease digestion; processing 5' and 3' ends of pre-tRNA precursors; acting as an RNA chaperone; and binding viral RNAs associated with hepatitis C virus. Autoantibodies reacting with this protein are found in the sera of patients with Sjogren syndrome and systemic lupus erythematosus.
Synonyms:	La; LARP3; SSB

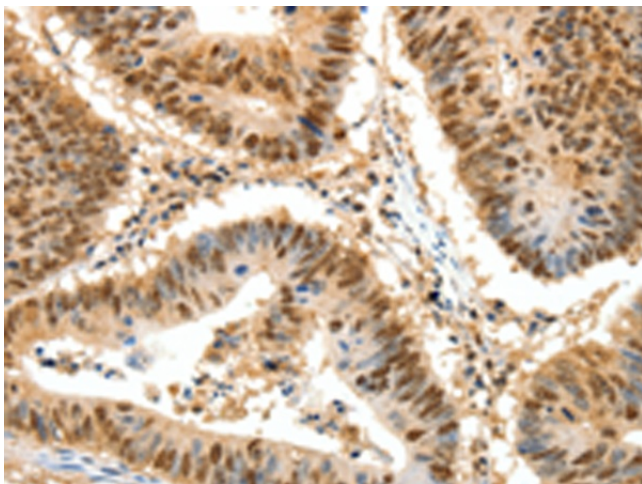


[View online »](#)

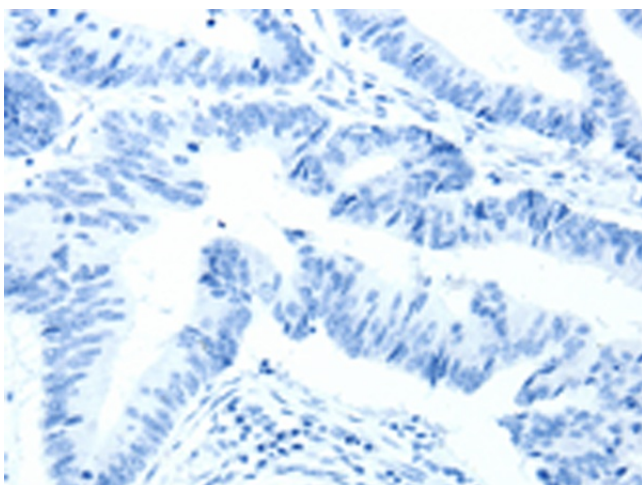
Protein Families: Stem cell - Pluripotency, Transcription Factors

Protein Pathways: Systemic lupus erythematosus

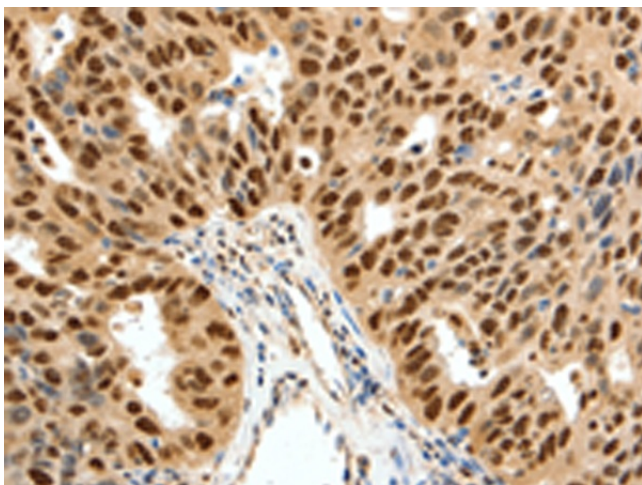
**Product images:**



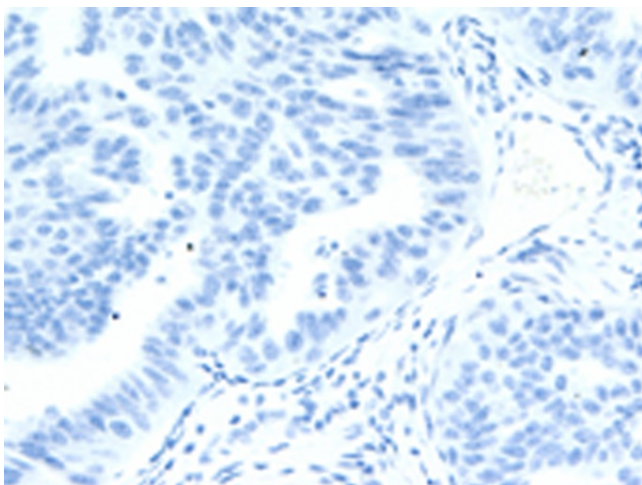
Immunohistochemistry of paraffin-embedded Human colon cancer tissue using TA321562 (SSB Antibody) at dilution 1/50 (Original magnification: ×200)



Immunohistochemistry of paraffin-embedded Human colon cancer tissue using TA321562 (SSB Antibody) at dilution 1/50, treated with synthetic peptide. (Original magnification: ×200)



Immunohistochemistry of paraffin-embedded Human ovarian cancer tissue using TA321562 (SSB Antibody) at dilution 1/50 (Original magnification:  $\times 200$ )



Immunohistochemistry of paraffin-embedded Human ovarian cancer tissue using TA321562 (SSB Antibody) at dilution 1/50, treated with synthetic peptide. (Original magnification:  $\times 200$ )