

Product datasheet for **TA321559**

SOX2 Rabbit Polyclonal Antibody

Product data:

Product Type:	Primary Antibodies
Applications:	IHC, WB
Recommended Dilution:	WB: 500-2000 WB positive control: Mouse brain tissue lysate IHC: 50-200 Positive control: Human tonsil Predicted cell location: Nucleus
Reactivity:	Human, Mouse
Host:	Rabbit
Isotype:	IgG
Clonality:	Polyclonal
Immunogen:	Fusion protein corresponding to C terminal 250 amino acids of human SRY (sex determining region Y)-box 2
Formulation:	PBS pH7.3, 0.05% NaN ₃ , 50% glycerol
Concentration:	lot specific
Purification:	Antigen affinity purification
Conjugation:	Unconjugated
Storage:	Store at -20°C as received.
Stability:	Stable for 12 months from date of receipt.
Predicted Protein Size:	34 kDa
Gene Name:	SRY-box 2
Database Link:	NP_003097 Entrez Gene 20674 Mouse Entrez Gene 6657 Human P48431



[View online »](#)

Background:

This intronless gene encodes a member of the SRY-related HMG-box (SOX) family of transcription factors involved in the regulation of embryonic development and in the determination of cell fate. The product of this gene is required for stem-cell maintenance in the central nervous system; and also regulates gene expression in the stomach. Mutations in this gene have been associated with optic nerve hypoplasia and with syndromic microphthalmia; a severe form of structural eye malformation. This gene lies within an intron of another gene called SOX2 overlapping transcript (SOX2OT).

Synonyms:

ANOP3; MCOPS3

Protein Families:

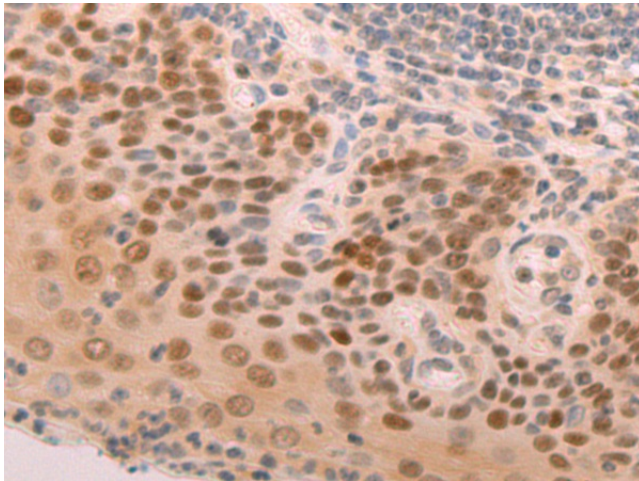
Adult stem cells, Cancer stem cells, Embryonic stem cells, ES Cell Differentiation/IPS, Induced pluripotent stem cells, Transcription Factors

Product images:

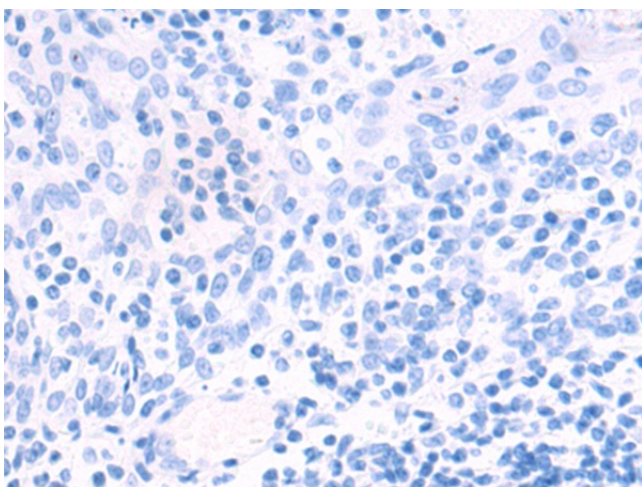
kDa
130—
95—
72—
55—
36—
28—
17—



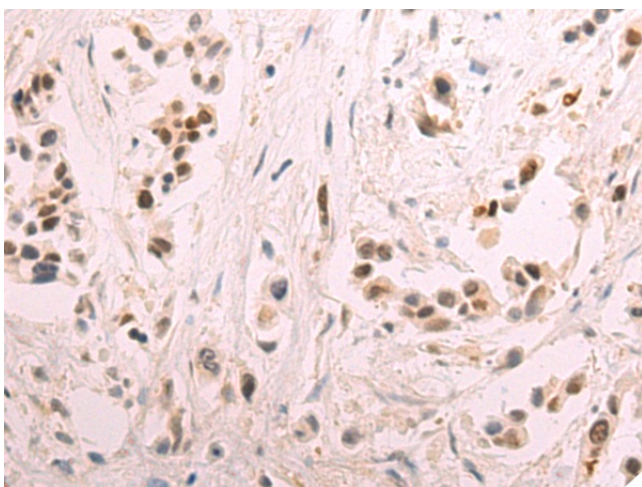
Gel: 8%SDS-PAGE
Lysate: 40 µg
Lane: Mouse brain tissue lysate
Primary antibody: TA321559 (SOX2 Antibody) at dilution 1/550
Secondary antibody: Goat anti rabbit IgG at 1/5000 dilution
Exposure time: 20 seconds



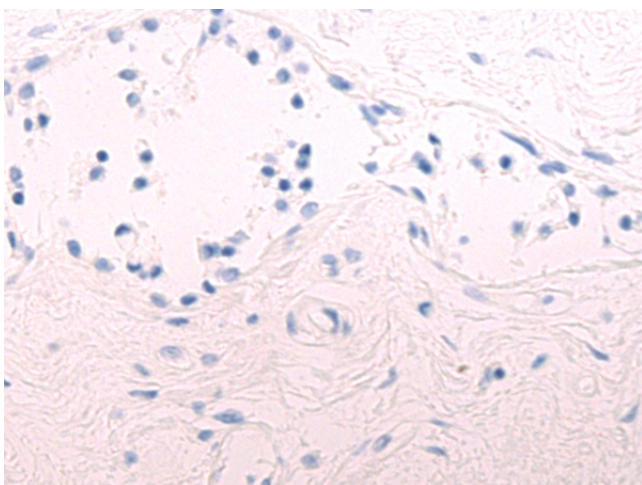
Immunohistochemistry of paraffin-embedded Human tonsil tissue using TA321559 (SOX2 Antibody) at dilution 1/75 (Original magnification: ×200)



Immunohistochemistry of paraffin-embedded Human tonsil tissue using TA321559 (SOX2 Antibody) at dilution 1/75, treated with fusion protein. (Original magnification: x200)



Immunohistochemistry of paraffin-embedded Human breast cancer tissue using TA321559 (SOX2 Antibody) at dilution 1/75 (Original magnification: x200)



Immunohistochemistry of paraffin-embedded Human breast cancer tissue using TA321559 (SOX2 Antibody) at dilution 1/75, treated with fusion protein. (Original magnification: x200)