

Product datasheet for **TA321555S**

Monocarboxylic acid transporter 1 (SLC16A1) Rabbit Polyclonal Antibody

Product data:

| | |
|-------------------------|---|
| Product Type: | Primary Antibodies |
| Applications: | IHC, WB |
| Recommended Dilution: | WB: 500-2000 WB positive control: Jurkat cell lysate IHC: 50-100 Positive control: Human ovarian cancer Predicted cell location: Cytoplasm and Cell membrane |
| Reactivity: | Human |
| Host: | Rabbit |
| Isotype: | IgG |
| Clonality: | Polyclonal |
| Immunogen: | Synthetic peptide corresponding to a region derived from 484-500 amino acids of Human solute carrier family 16, member 1 (monocarboxylic acid transporter 1) |
| Formulation: | PBS pH7.3, 0.05% NaN ₃ , 50% glycerol |
| Concentration: | lot specific |
| Purification: | Antigen affinity purification |
| Conjugation: | Unconjugated |
| Storage: | Store at -20°C as received. |
| Stability: | Stable for 12 months from date of receipt. |
| Predicted Protein Size: | 54 kDa |
| Gene Name: | solute carrier family 16 member 1 |
| Database Link: | NP_003042 Entrez Gene 6566 Human P53985 |
| Background: | The protein encoded by this gene is a proton-linked monocarboxylate transporter that catalyzes the movement of many monocarboxylates; such as lactate and pyruvate; across the plasma membrane. Mutations in this gene are associated with erythrocyte lactate transporter defect. Alternatively spliced transcript variants have been found for this gene. |

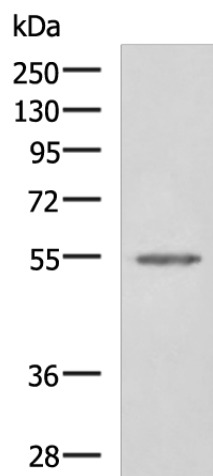


[View online »](#)

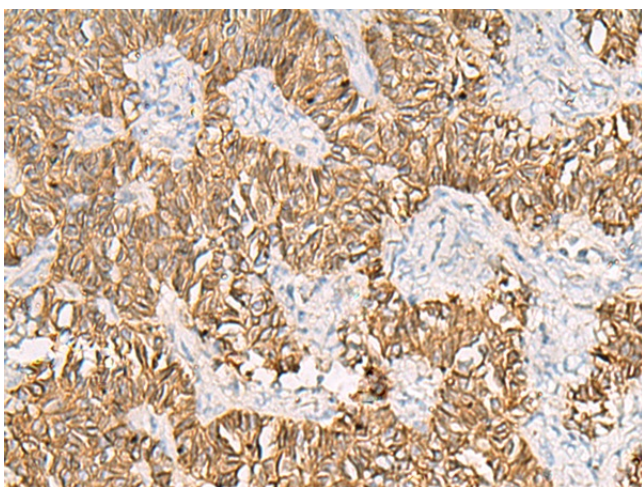
Synonyms: HHF7; MCT; MCT1; MCT1D

Protein Families: Transmembrane

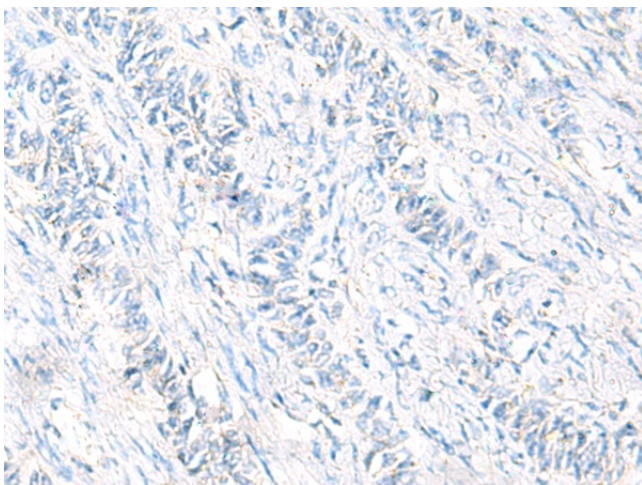
Product images:



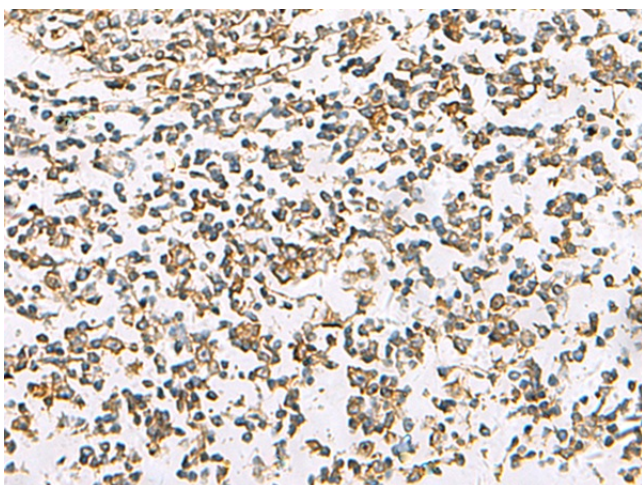
Gel: 8%SDS-PAGE
Lysate: 40 μ g
Lane: Jurkat cell lysate
Primary antibody: [TA321555] (SLC16A1 Antibody) at dilution 1/550
Secondary antibody: Goat anti rabbit IgG at 1/5000 dilution
Exposure time: 1 minute



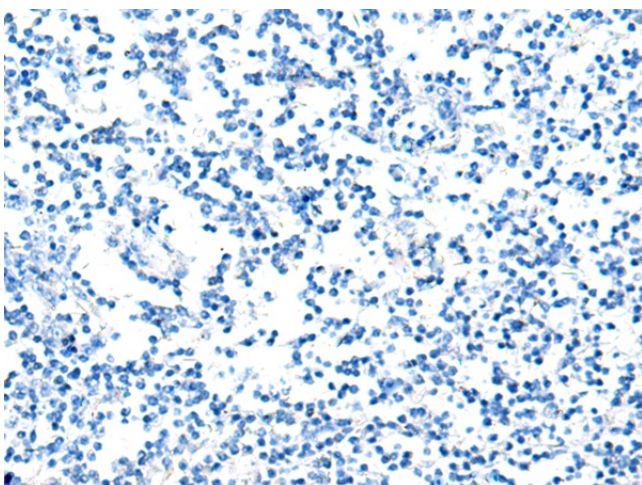
Immunohistochemistry of paraffin-embedded Human ovarian cancer tissue using [TA321555] (SLC16A1 Antibody) at dilution 1/30 (Original magnification: \times 200)



Immunohistochemistry of paraffin-embedded Human ovarian cancer tissue using [TA321555] (SLC16A1 Antibody) at dilution 1/30, treated with synthetic peptide. (Original magnification: $\times 200$)



Immunohistochemistry of paraffin-embedded Human tonsil tissue using [TA321555] (SLC16A1 Antibody) at dilution 1/30 (Original magnification: $\times 200$)



Immunohistochemistry of paraffin-embedded Human tonsil tissue using [TA321555] (SLC16A1 Antibody) at dilution 1/30, treated with synthetic peptide. (Original magnification: $\times 200$)