

Product datasheet for **TA321555**

Monocarboxylic acid transporter 1 (SLC16A1) Rabbit Polyclonal Antibody

Product data:

Product Type:	Primary Antibodies
Applications:	IHC, WB
Recommended Dilution:	WB: 500-2000 WB positive control: Jurkat cell lysate IHC: 50-100 Positive control: Human ovarian cancer Predicted cell location: Cytoplasm and Cell membrane
Reactivity:	Human
Host:	Rabbit
Isotype:	IgG
Clonality:	Polyclonal
Immunogen:	Synthetic peptide corresponding to a region derived from 484-500 amino acids of Human solute carrier family 16, member 1 (monocarboxylic acid transporter 1)
Formulation:	PBS pH7.3, 0.05% NaN ₃ , 50% glycerol
Concentration:	lot specific
Purification:	Antigen affinity purification
Conjugation:	Unconjugated
Storage:	Store at -20°C as received.
Stability:	Stable for 12 months from date of receipt.
Predicted Protein Size:	54 kDa
Gene Name:	solute carrier family 16 member 1
Database Link:	NP_003042 Entrez Gene 6566 Human P53985
Background:	The protein encoded by this gene is a proton-linked monocarboxylate transporter that catalyzes the movement of many monocarboxylates; such as lactate and pyruvate; across the plasma membrane. Mutations in this gene are associated with erythrocyte lactate transporter defect. Alternatively spliced transcript variants have been found for this gene.

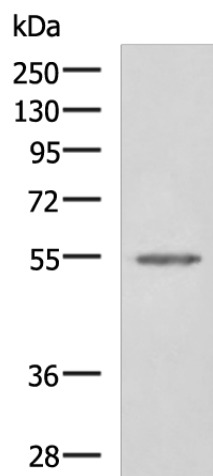


[View online »](#)

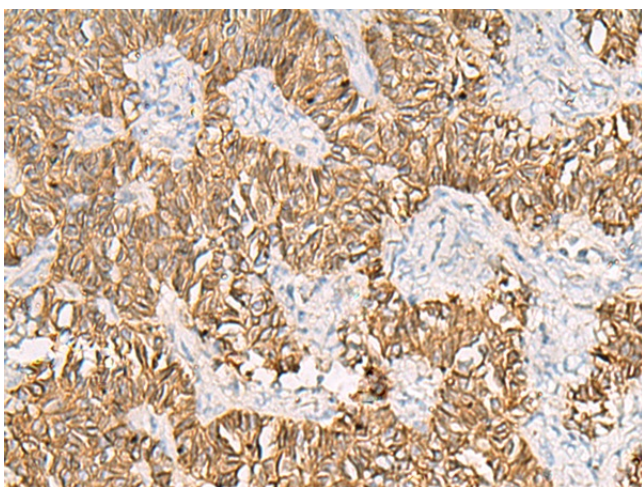
Synonyms: HHF7; MCT; MCT1; MCT1D

Protein Families: Transmembrane

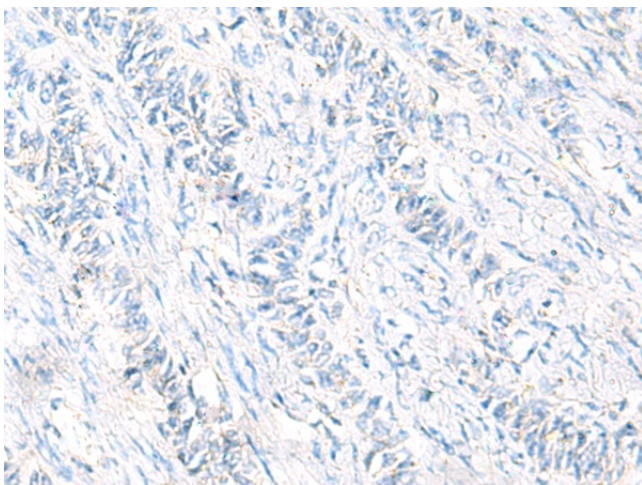
Product images:



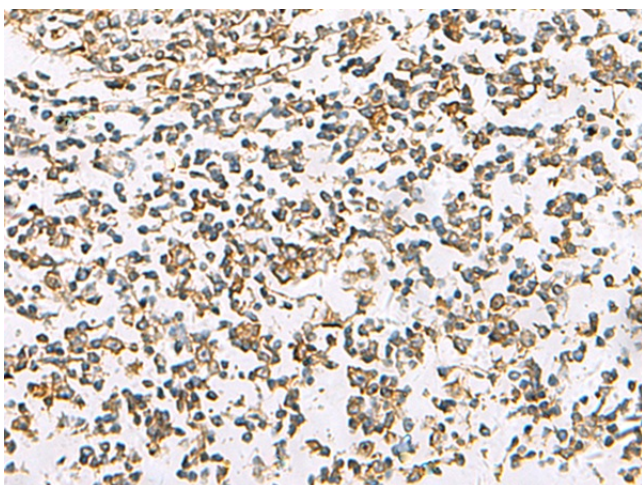
Gel: 8%SDS-PAGE
Lysate: 40 μ g
Lane: Jurkat cell lysate
Primary antibody: TA321555 (SLC16A1 Antibody) at dilution 1/550
Secondary antibody: Goat anti rabbit IgG at 1/5000 dilution
Exposure time: 1 minute



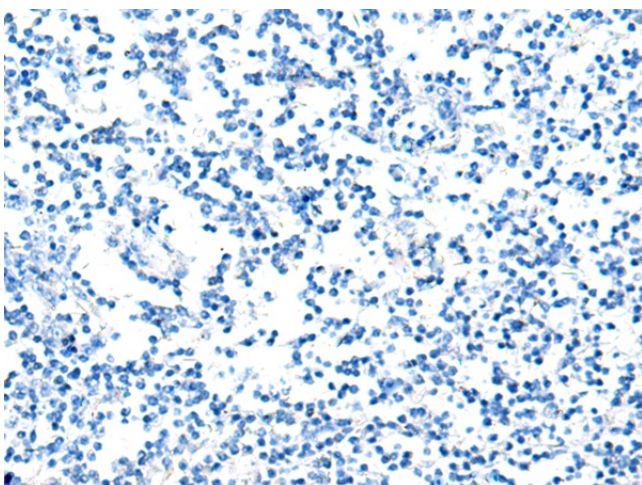
Immunohistochemistry of paraffin-embedded Human ovarian cancer tissue using TA321555 (SLC16A1 Antibody) at dilution 1/30 (Original magnification: \times 200)



Immunohistochemistry of paraffin-embedded Human ovarian cancer tissue using TA321555 (SLC16A1 Antibody) at dilution 1/30, treated with synthetic peptide. (Original magnification: $\times 200$)



Immunohistochemistry of paraffin-embedded Human tonsil tissue using TA321555 (SLC16A1 Antibody) at dilution 1/30 (Original magnification: $\times 200$)



Immunohistochemistry of paraffin-embedded Human tonsil tissue using TA321555 (SLC16A1 Antibody) at dilution 1/30, treated with synthetic peptide. (Original magnification: $\times 200$)