

Product datasheet for **TA321553**

VMAT2 (SLC18A2) Rabbit Polyclonal Antibody

Product data:

Product Type:	Primary Antibodies
Applications:	IHC, WB
Recommended Dilution:	WB: 500-2000 WB positive control: Human cervical cancer tissue IHC: 25-100 Positive control: Human brain Predicted cell location: Cytoplasm
Reactivity:	Human, Mouse, Rat
Host:	Rabbit
Isotype:	IgG
Clonality:	Polyclonal
Immunogen:	Synthetic peptide corresponding to a region derived from 500-514 amino acids of human solute carrier family 18 (vesicular monoamine), member 2
Formulation:	PBS pH7.3, 0.05% NaN ₃ , 50% glycerol
Concentration:	lot specific
Purification:	Antigen affinity purification
Conjugation:	Unconjugated
Storage:	Store at -20°C as received.
Stability:	Stable for 12 months from date of receipt.
Predicted Protein Size:	55 kDa
Gene Name:	solute carrier family 18 member A2
Database Link:	NP_003045 Entrez Gene 25549 Rat Entrez Gene 214084 Mouse Entrez Gene 6571 Human Q05940



[View online »](#)

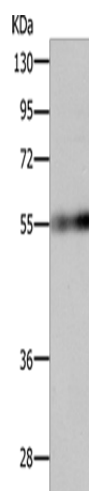
Background: The vesicular monoamine transporter acts to accumulate cytosolic monoamines into synaptic vesicles; using the proton gradient maintained across the synaptic vesicular membrane. Its proper function is essential to the correct activity of the monoaminergic systems that have been implicated in several human neuropsychiatric disorders. The transporter is a site of action of important drugs; including reserpine and tetrabenazine .

Synonyms: SVAT; SVMT; VAT2; VMAT2

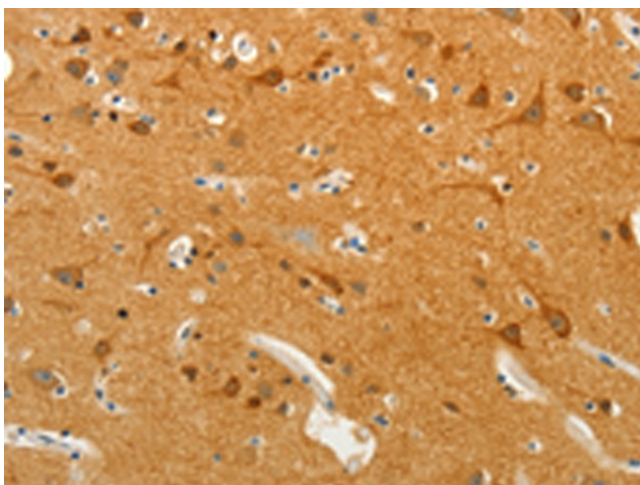
Protein Families: Transmembrane

Protein Pathways: Parkinson's disease

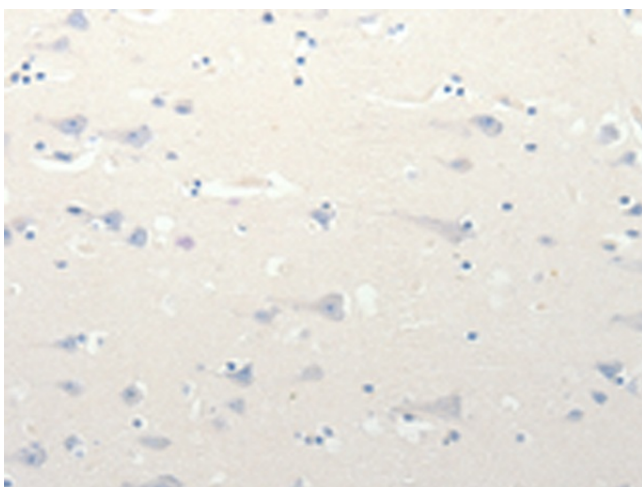
Product images:



Gel: 10%SDS-PAGE
Lysate: 40 µg
Lane: Human cervical cancer tissue
Primary antibody: TA321553 (SLC18A2 Antibody) at dilution 1/400
Secondary antibody: Goat anti rabbit IgG at 1/8000 dilution
Exposure time: 45 seconds



Immunohistochemistry of paraffin-embedded Human brain tissue using TA321553 (SLC18A2 Antibody) at dilution 1/13 (Original magnification: ×200)



Immunohistochemistry of paraffin-embedded Human brain tissue using TA321553 (SLC18A2 Antibody) at dilution 1/13, treated with synthetic peptide. (Original magnification: ×200)