

## Product datasheet for **TA321552**

### Glucose Transporter 5 GLUT5 (SLC2A5) Rabbit Polyclonal Antibody

#### Product data:

Product Type:	Primary Antibodies
Applications:	IHC
Recommended Dilution:	IHC: 10-50 Positive control: Human colon cancer Predicted cell location: Cytoplasm
Reactivity:	Human
Host:	Rabbit
Isotype:	IgG
Clonality:	Polyclonal
Immunogen:	Synthetic peptide peptide corresponding to a region derived from 488-501 amino acids of human solute carrier family 2 (facilitated glucose/fructose transporter), member 5
Formulation:	PBS pH7.3, 0.05% NaN <sub>3</sub> , 50% glycerol
Concentration:	lot specific
Purification:	Antigen affinity purification
Conjugation:	Unconjugated
Storage:	Store at -20°C as received.
Stability:	Stable for 12 months from date of receipt.
Gene Name:	solute carrier family 2 member 5
Database Link:	<a href="#">NP_003030</a> <a href="#">Entrez Gene 6518 Human</a> <a href="#">P22732</a>
Background:	GLUT5 is a fructose transporter expressed on the apical border of enterocytes in the small intestine. GLUT5 allows for fructose to be transported from the intestinal lumen into the enterocyte by facilitated diffusion due to fructose's high concentration in the intestinal lumen. GLUT5 is also expressed in skeletal muscle; testis; kidney; fat tissue; and brain. Fructose malabsorption or Dietary Fructose Intolerance is a dietary disability of the small intestine; where the amount of fructose carrier in enterocytes is deficient. In humans the GLUT5 protein is encoded by the SLC2A5 gene.

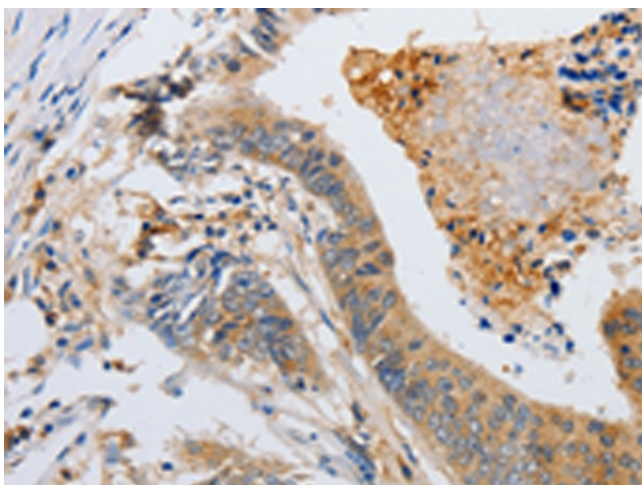


[View online »](#)

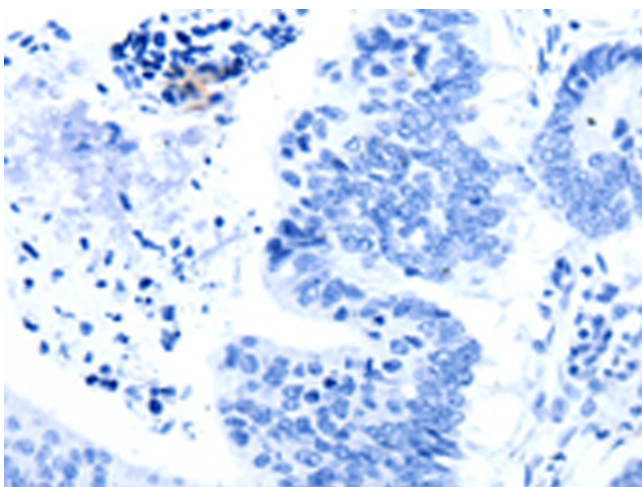
Synonyms: GLUT-5; GLUT5

Protein Families: Transmembrane

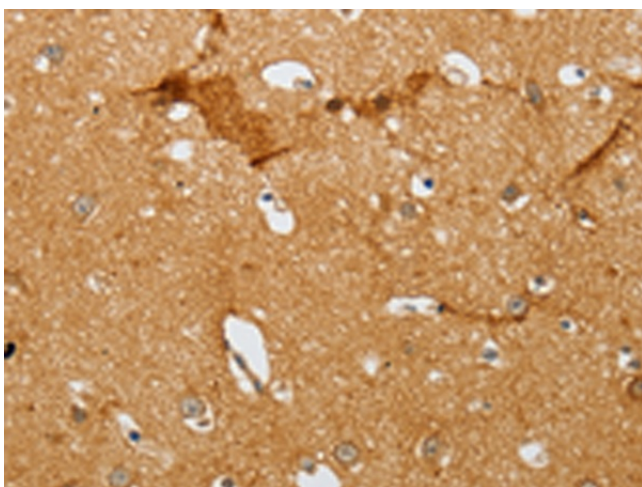
**Product images:**



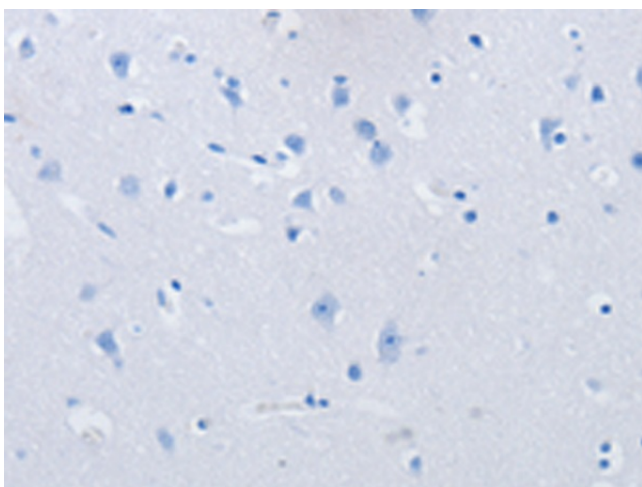
Immunohistochemistry of paraffin-embedded Human colon cancer tissue using TA321552 (SLC2A5 Antibody) at dilution 1/12 (Original magnification:  $\times 200$ )



Immunohistochemistry of paraffin-embedded Human colon cancer tissue using TA321552 (SLC2A5 Antibody) at dilution 1/12, treated with synthetic peptide. (Original magnification:  $\times 200$ )



Immunohistochemistry of paraffin-embedded Human brain tissue using TA321552 (SLC2A5 Antibody) at dilution 1/12 (Original magnification:  $\times 200$ )



Immunohistochemistry of paraffin-embedded Human brain tissue using TA321552 (SLC2A5 Antibody) at dilution 1/12, treated with synthetic peptide. (Original magnification:  $\times 200$ )