

## Product datasheet for **TA321548**

### Surfactant protein D (SFTPD) Rabbit Polyclonal Antibody

#### Product data:

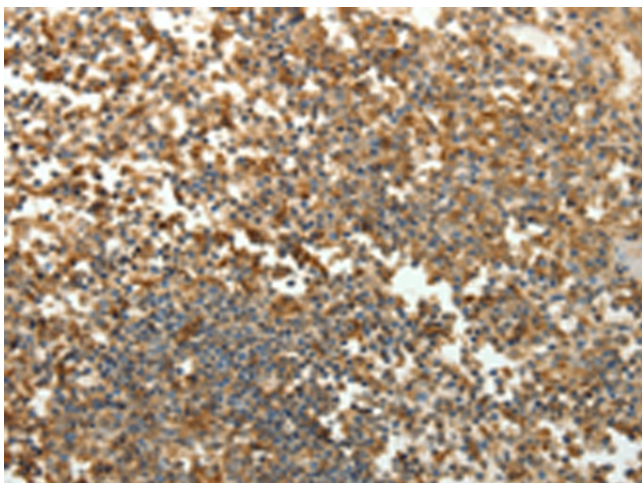
Product Type:	Primary Antibodies
Applications:	IHC
Recommended Dilution:	IHC: 25-100 Positive control: Human tonsil Predicted cell location: Cytoplasm
Reactivity:	Human
Host:	Rabbit
Isotype:	IgG
Clonality:	Polyclonal
Immunogen:	Fusion protein corresponding to a region derived from 260-375 amino acids of human surfactant protein D
Formulation:	PBS pH7.3, 0.05% NaN <sub>3</sub> , 50% glycerol
Concentration:	lot specific
Purification:	Antigen affinity purification
Conjugation:	Unconjugated
Storage:	Store at -20°C as received.
Stability:	Stable for 12 months from date of receipt.
Gene Name:	surfactant protein D
Database Link:	<a href="#">NP_003010</a> <a href="#">Entrez Gene 6441 Human</a> <a href="#">P35247</a>
Background:	Surfactant; pulmonary-associated protein D; also known as SFTPD or SP-D; is a protein which in humans is encoded by the SFTPD gene. SFTPD is an innate immune system collectin. Surfactant protein D has been shown to interact with DMBT1. Contributes to the lung's defense against inhaled microorganisms. May participate in the extracellular reorganization or turnover of pulmonary surfactant. Binds strongly maltose residues and to a lesser extent other alpha-glucosyl moieties.
Synonyms:	COLEC7; PSP-D; SFTP4; SP-D



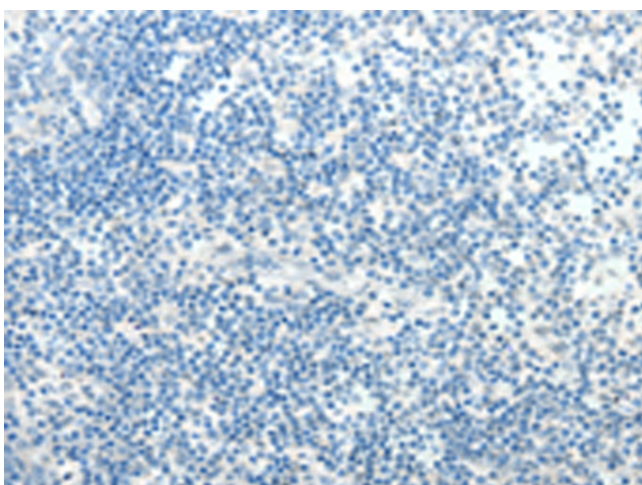
[View online »](#)

Protein Families: Druggable Genome, Secreted Protein

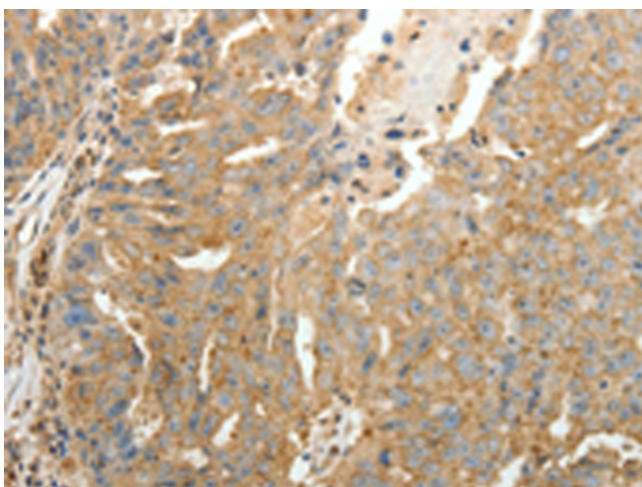
### Product images:



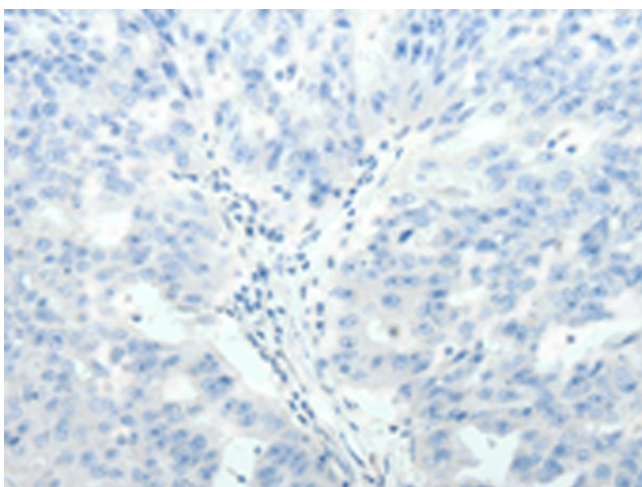
Immunohistochemistry of paraffin-embedded Human tonsil tissue using TA321548 (SFTPD Antibody) at dilution 1/30 (Original magnification: ×200)



Immunohistochemistry of paraffin-embedded Human tonsil tissue using TA321548 (SFTPD Antibody) at dilution 1/30, treated with fusion protein. (Original magnification: ×200)



Immunohistochemistry of paraffin-embedded Human ovarian cancer tissue using TA321548 (SFTPD Antibody) at dilution 1/30 (Original magnification: ×200)



Immunohistochemistry of paraffin-embedded Human ovarian cancer tissue using TA321548 (SFTPD Antibody) at dilution 1/30, treated with fusion protein. (Original magnification: ×200)