

Product datasheet for **TA321539**

SHP2 (PTPN11) Rabbit Polyclonal Antibody

Product data:

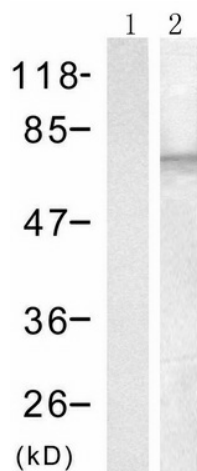
Product Type:	Primary Antibodies
Applications:	IHC, WB
Recommended Dilution:	WB: 1:500-1000, IHC: 1:50-100
Reactivity:	Human, Mouse, Rat
Modifications:	Phospho-specific
Host:	Rabbit
Isotype:	IgG
Clonality:	Polyclonal
Immunogen:	Peptide sequence around phosphorylation site of tyrosine 542 (H-E-Y(p)-T-N) derived from Human SHP-2.
Formulation:	PBS pH7.3, 0.05% NaN ₃ , 50% glycerol
Concentration:	lot specific
Purification:	Antigen affinity purification
Conjugation:	Unconjugated
Storage:	Store at -20°C as received.
Stability:	Stable for 12 months from date of receipt.
Predicted Protein Size:	68 kDa
Gene Name:	protein tyrosine phosphatase, non-receptor type 11
Database Link:	NP_002825 Entrez Gene 19247 Mouse Entrez Gene 25622 Rat Entrez Gene 5781 Human Q06124
Background:	Acts downstream of various receptor and cytoplasmic protein tyrosine kinases to participate in the signal transduction from the cell surface to the nucleus.
Synonyms:	BPTP3; CFC; JMML; METCDS; NS1; PTP-1D; PTP2C; SH-PTP2; SH-PTP3; SHP2
Protein Families:	Druggable Genome, Phosphatase



[View online »](#)

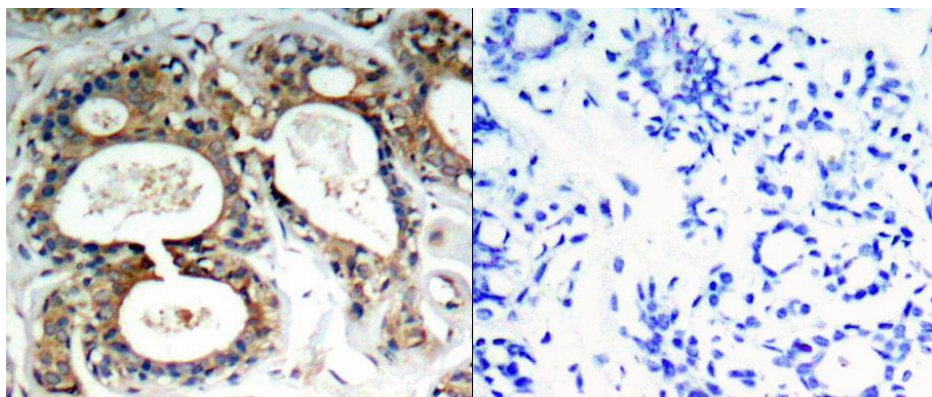
Protein Pathways:

Adipocytokine signaling pathway, Chronic myeloid leukemia, Epithelial cell signaling in Helicobacter pylori infection, Jak-STAT signaling pathway, Leukocyte transendothelial migration, Natural killer cell mediated cytotoxicity, Neurotrophin signaling pathway, Renal cell carcinoma

Product images:

Predicted band size: 68 kDa. Positive control: 293 cells treated with starvation lysate.

Recommended dilution: 1/ 500-1000. (Gel: 8%SDS-PAGE Lane 1: 293 cells untreated with starvation lysate Lane 2: 293 cells treated with starvation lysate Lysates: 30 ug per lane Primary antibody: 1/500 dilution Secondary antibody: Goat anti Rabbit IgG - H&L (HRP) at 1/10000 dilution Exposure time: 1 minute)



Predicted cell location: Cytoplasm. Positive control: Human breast carcinoma tissue.

Recommended dilution: 1/ 50-100 The image on the left is immunohistochemistry of paraffin-embedded human breast carcinoma tissue using PTPN11 (Phospho-Tyr542) antibody at dilution 1/50, on the right is treated with the synthetic peptide. (Original magnification: x200)