

## Product datasheet for **TA321538S**

### **SHP2 (PTPN11) Rabbit Polyclonal Antibody**

#### **Product data:**

|                                |   |
|--------------------------------|---|
| <b>Product Type:</b>           | Primary Antibodies  |
| <b>Applications:</b>           | IHC, WB   |
| <b>Recommended Dilution:</b>   | WB: 500-2000<br>WB positive control: NIH/3T3, 293T, 231 cell lysates<br>IHC: 50-200<br>Positive control: Human esophagus cancer<br>Predicted cell location: Cytoplasm       |
| <b>Reactivity:</b>             | Human, Mouse, Rat   |
| <b>Host:</b>                   | Rabbit  |
| <b>Isotype:</b>                | IgG   |
| <b>Clonality:</b>              | Polyclonal  |
| <b>Immunogen:</b>              | Fusion protein corresponding to C terminal 250 amino acids of human protein tyrosine phosphatase, non-receptor type 11  |
| <b>Formulation:</b>            | PBS pH7.3, 0.05% NaN <sub>3</sub> , 50% glycerol  |
| <b>Purification:</b>           | Antigen affinity purification   |
| <b>Conjugation:</b>            | Unconjugated  |
| <b>Storage:</b>                | Store at -20°C as received.   |
| <b>Stability:</b>              | Stable for 12 months from date of receipt.  |
| <b>Predicted Protein Size:</b> | 68 kDa  |
| <b>Gene Name:</b>              | protein tyrosine phosphatase, non-receptor type 11  |
| <b>Database Link:</b>          | <a href="#">NP_002825</a><br><a href="#">Entrez Gene 19247 Mouse</a> <a href="#">Entrez Gene 25622 Rat</a> <a href="#">Entrez Gene 5781 Human</a><br><a href="#">Q06124</a> |



[View online »](#)

**Background:**

The protein encoded by this gene is a member of the protein tyrosine phosphatase (PTP) family. PTPs are known to be signaling molecules that regulate a variety of cellular processes including cell growth; differentiation; mitotic cycle; and oncogenic transformation. This PTP contains two tandem Src homology-2 domains; which function as phospho-tyrosine binding domains and mediate the interaction of this PTP with its substrates. This PTP is widely expressed in most tissues and plays a regulatory role in various cell signaling events that are important for a diversity of cell functions; such as mitogenic activation; metabolic control; transcription regulation; and cell migration. Mutations in this gene are a cause of Noonan syndrome as well as acute myeloid leukemia. Two transcript variants encoding different isoforms have been found for this gene.

**Synonyms:**

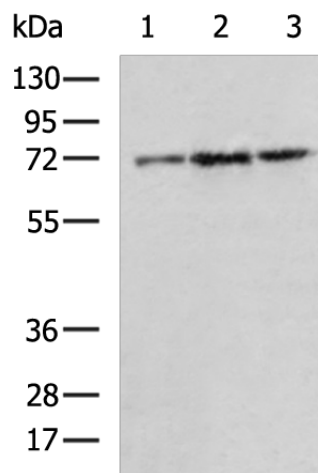
BPTP3; CFC; JMML; METCDS; NS1; PTP-1D; PTP2C; SH-PTP2; SH-PTP3; SHP2

**Protein Families:**

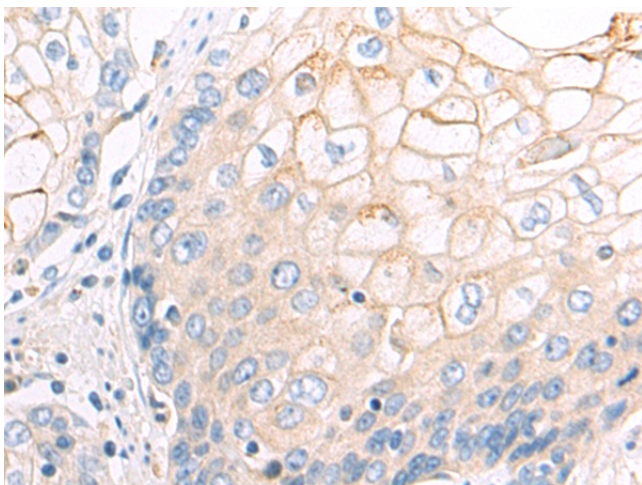
Druggable Genome, Phosphatase

**Protein Pathways:**

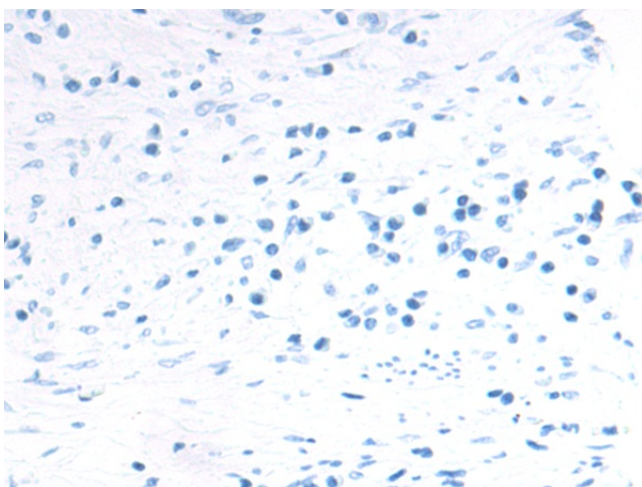
Adipocytokine signaling pathway, Chronic myeloid leukemia, Epithelial cell signaling in Helicobacter pylori infection, Jak-STAT signaling pathway, Leukocyte transendothelial migration, Natural killer cell mediated cytotoxicity, Neurotrophin signaling pathway, Renal cell carcinoma

**Product images:**

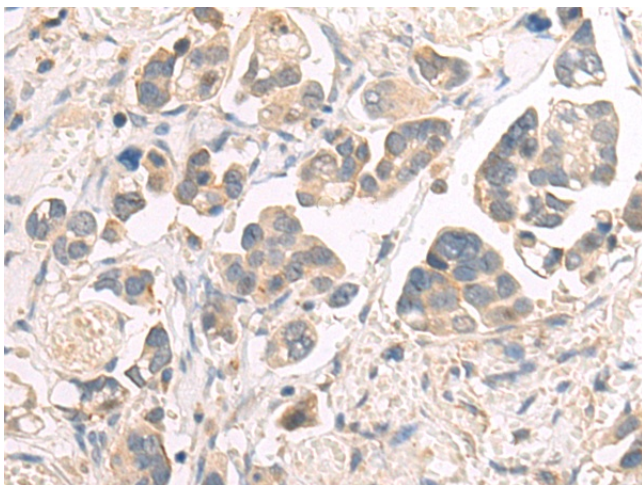
Gel: 8%SDS-PAGE  
Lysate: 40 µg  
Lane 1-3: NIH/3T3  
293T  
231 cell lysates  
Primary antibody: [TA321538] (PTPN11 Antibody)  
at dilution 1/400  
Secondary antibody: Goat anti rabbit IgG at  
1/5000 dilution  
Exposure time: 20 seconds



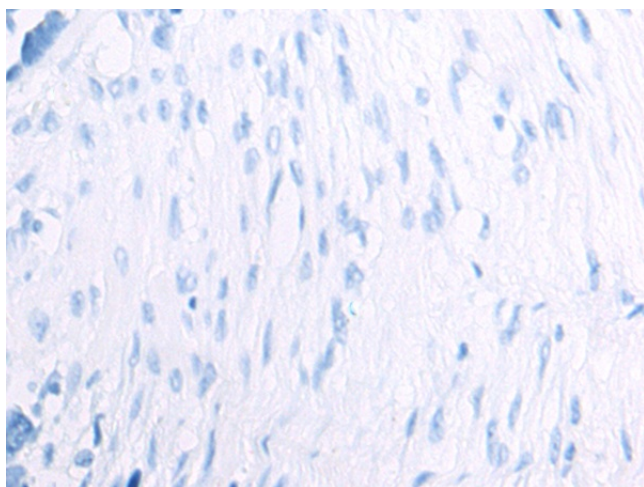
Immunohistochemistry of paraffin-embedded Human esophagus cancer tissue using [TA321538] (PTPN11 Antibody) at dilution 1/60 (Original magnification:  $\times 200$ )



Immunohistochemistry of paraffin-embedded Human esophagus cancer tissue using [TA321538] (PTPN11 Antibody) at dilution 1/60, treated with fusion protein. (Original magnification:  $\times 200$ )



Immunohistochemistry of paraffin-embedded Human colorectal cancer tissue using [TA321538] (PTPN11 Antibody) at dilution 1/60 (Original magnification:  $\times 200$ )



Immunohistochemistry of paraffin-embedded Human colorectal cancer tissue using [TA321538] (PTPN11 Antibody) at dilution 1/60, treated with fusion protein. (Original magnification:  $\times 200$ )