

## Product datasheet for **TA321535**

### **SHP1 (PTPN6) Rabbit Polyclonal Antibody**

#### **Product data:**

Product Type:	Primary Antibodies
Applications:	IHC, WB
Recommended Dilution:	WB: 200-1000 WB positive control: A375 and A431 cells IHC: 50-200 Positive control: Human colon cancer Predicted cell location: Cytoplasm
Reactivity:	Human, Mouse, Rat
Host:	Rabbit
Isotype:	IgG
Clonality:	Polyclonal
Immunogen:	Fusion protein corresponding to a region derived from 244-515 amino acids of human protein tyrosine phosphatase, non-receptor type 6
Formulation:	PBS pH7.3, 0.05% NaN <sub>3</sub> , 50% glycerol
Concentration:	lot specific
Purification:	Antigen affinity purification
Conjugation:	Unconjugated
Storage:	Store at -20°C as received.
Stability:	Stable for 12 months from date of receipt.
Predicted Protein Size:	68 kDa
Gene Name:	protein tyrosine phosphatase, non-receptor type 6
Database Link:	<a href="#">NP_002822</a> <a href="#">Entrez Gene 15170 Mouse</a> <a href="#">Entrez Gene 116689 Rat</a> <a href="#">Entrez Gene 5777 Human</a> <a href="#">P29350</a>



[View online »](#)

**Background:**

The protein encoded by this gene is a member of the protein tyrosine phosphatase (PTP) family. PTPs are known to be signaling molecules that regulate a variety of cellular processes including cell growth; differentiation; mitotic cycle; and oncogenic transformation. N-terminal part of this PTP contains two tandem Src homolog (SH2) domains; which act as protein phospho-tyrosine binding domains; and mediate the interaction of this PTP with its substrates. This PTP is expressed primarily in hematopoietic cells; and functions as an important regulator of multiple signaling pathways in hematopoietic cells. This PTP has been shown to interact with; and dephosphorylate a wide spectrum of phospho-proteins involved in hematopoietic cell signaling. Multiple alternatively spliced variants of this gene; which encode distinct isoforms; have been reported.

**Synonyms:**

HCP; HCPH; HPTP1C; PTP-1C; SH-PTP1; SHP-1; SHP-1L; SHP1

**Protein Families:**

Druggable Genome, Phosphatase, Stem cell - Pluripotency

**Protein Pathways:**

Adherens junction, B cell receptor signaling pathway, Jak-STAT signaling pathway, Natural killer cell mediated cytotoxicity, T cell receptor signaling pathway

**Product images:**

Gel: 10%SDS-PAGE

Lysate: 40 µg

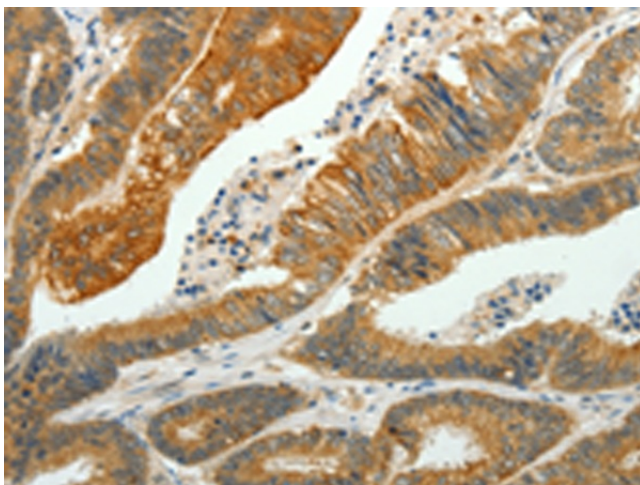
Lane 1-2: A375 cells

A431 cells

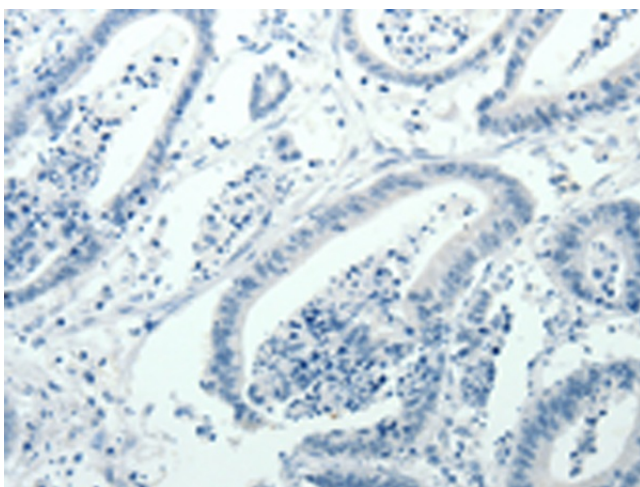
Primary antibody: TA321535 (PTPN6 Antibody) at dilution 1/500

Secondary antibody: Goat anti rabbit IgG at 1/8000 dilution

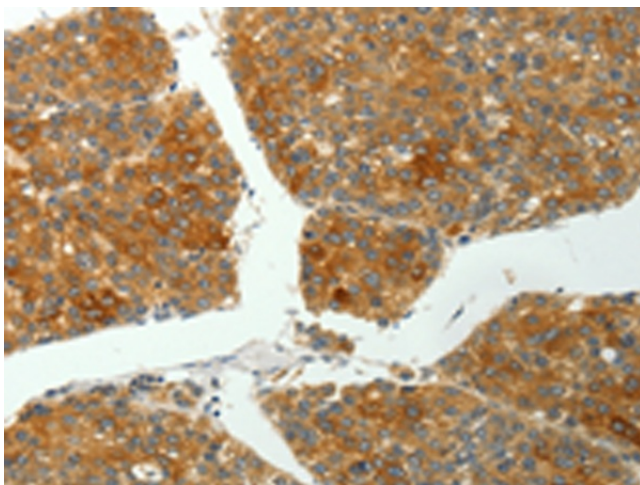
Exposure time: 90 seconds



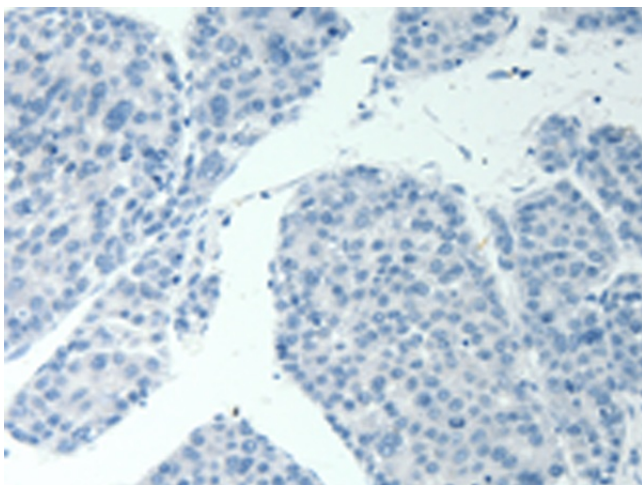
Immunohistochemistry of paraffin-embedded Human colon cancer tissue using TA321535 (PTPN6 Antibody) at dilution 1/35 (Original magnification: ×200)



Immunohistochemistry of paraffin-embedded Human colon cancer tissue using TA321535 (PTPN6 Antibody) at dilution 1/35, treated with fusion protein. (Original magnification: ×200)



Immunohistochemistry of paraffin-embedded Human liver cancer tissue using TA321535 (PTPN6 Antibody) at dilution 1/35 (Original magnification: ×200)



Immunohistochemistry of paraffin-embedded Human liver cancer tissue using TA321535 (PTPN6 Antibody) at dilution 1/35, treated with fusion protein. (Original magnification: ×200)