

Product datasheet for **TA321533S**

Parathyroid hormone related protein (PTHrP) Rabbit Polyclonal Antibody

Product data:

| | |
|-----------------------|---|
| Product Type: | Primary Antibodies |
| Applications: | IHC |
| Recommended Dilution: | IHC: 25-100 Positive control: Human liver cancer Predicted cell location: Cytoplasm |
| Reactivity: | Human, Mouse, Rat |
| Host: | Rabbit |
| Isotype: | IgG |
| Clonality: | Polyclonal |
| Immunogen: | Fusion protein corresponding to a region derived from 37-177 amino acids of human parathyroid hormone-like hormone |
| Formulation: | PBS pH7.3, 0.05% NaN ₃ , 50% glycerol |
| Purification: | Antigen affinity purification |
| Conjugation: | Unconjugated |
| Storage: | Store at -20°C as received. |
| Stability: | Stable for 12 months from date of receipt. |
| Gene Name: | parathyroid hormone-like hormone |
| Database Link: | NP_002811 Entrez Gene 19227 Mouse Entrez Gene 24695 Rat Entrez Gene 5744 Human P12272 |
| Background: | The protein encoded by this gene is a member of the parathyroid hormone family. This hormone regulates endochondral bone development and epithelial-mesenchymal interactions during the formation of the mammary glands and teeth. This hormone is involved in lactation possibly by regulating the mobilization and transfer of calcium to the milk. The receptor of this hormone; PTHR1; is responsible for most cases of humoral hypercalcemia of malignancy. Four alternatively spliced transcript variants encoding two distinct isoforms have been observed. There is also evidence for alternative translation initiation from non-AUG (CUG and GUG) start sites; in-frame and downstream of the initiator AUG codon; to give rise to nuclear forms of this hormone. |

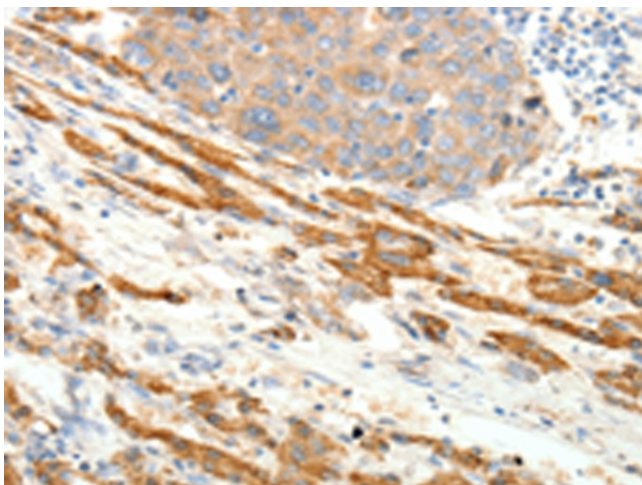


[View online »](#)

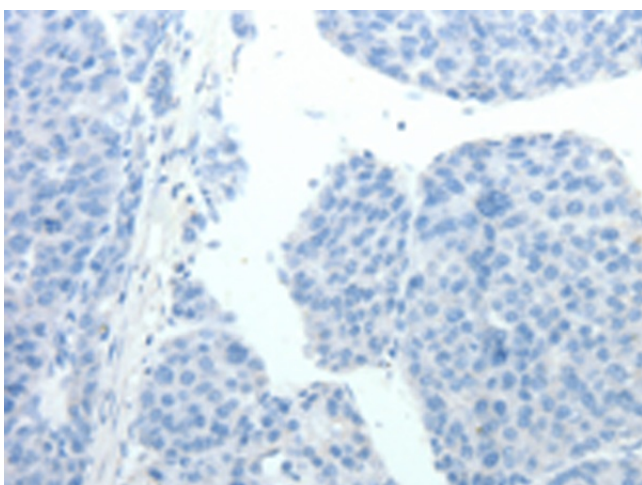
Synonyms: BDE2; HHM; PLP; PTHR; PTHRP

Protein Families: Druggable Genome, Secreted Protein

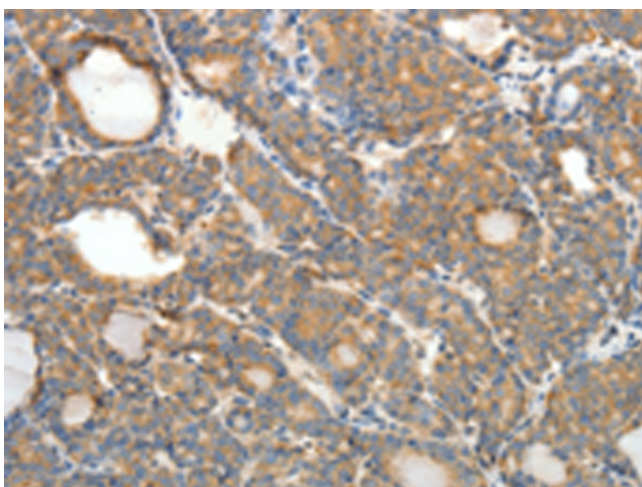
Product images:



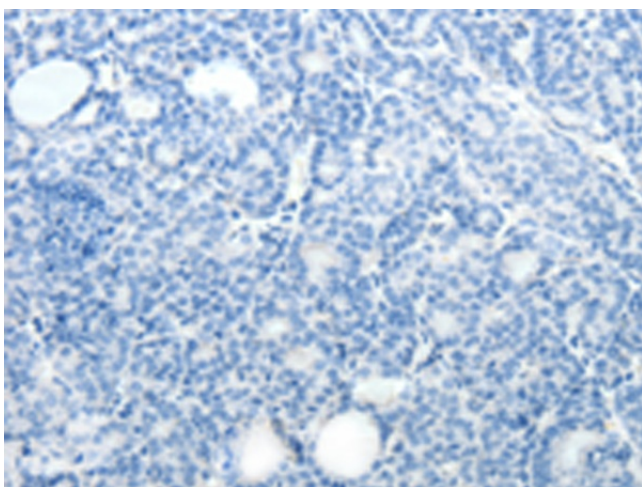
Immunohistochemistry of paraffin-embedded Human liver cancer tissue using [TA321533] (PTHrH Antibody) at dilution 1/20 (Original magnification: $\times 200$)



Immunohistochemistry of paraffin-embedded Human liver cancer tissue using [TA321533] (PTHrH Antibody) at dilution 1/20, treated with fusion protein. (Original magnification: $\times 200$)



Immunohistochemistry of paraffin-embedded Human thyroid cancer tissue using [TA321533] (PTHrP Antibody) at dilution 1/20 (Original magnification: $\times 200$)



Immunohistochemistry of paraffin-embedded Human thyroid cancer tissue using [TA321533] (PTHrP Antibody) at dilution 1/20, treated with fusion protein. (Original magnification: $\times 200$)