

## Product datasheet for **TA321532**

### Parathyroid hormone related protein (PTH1H) Rabbit Polyclonal Antibody

#### Product data:

Product Type:	Primary Antibodies
Applications:	IHC
Recommended Dilution:	IHC: 25-100 Positive control: Human ovarian cancer Predicted cell location: Cytoplasm
Reactivity:	Human, Mouse, Rat
Host:	Rabbit
Isotype:	IgG
Clonality:	Polyclonal
Immunogen:	Fusion protein corresponding to a region derived from 37-177 amino acids of human parathyroid hormone-like hormone
Formulation:	PBS pH7.3, 0.05% NaN <sub>3</sub> , 50% glycerol
Concentration:	lot specific
Purification:	Antigen affinity purification
Conjugation:	Unconjugated
Storage:	Store at -20°C as received.
Stability:	Stable for 12 months from date of receipt.
Gene Name:	parathyroid hormone-like hormone
Database Link:	<a href="#">NP_002811</a> <a href="#">Entrez Gene 19227 Mouse</a> <a href="#">Entrez Gene 24695 Rat</a> <a href="#">Entrez Gene 5744 Human</a> <a href="#">P12272</a>



[View online »](#)

**Background:**

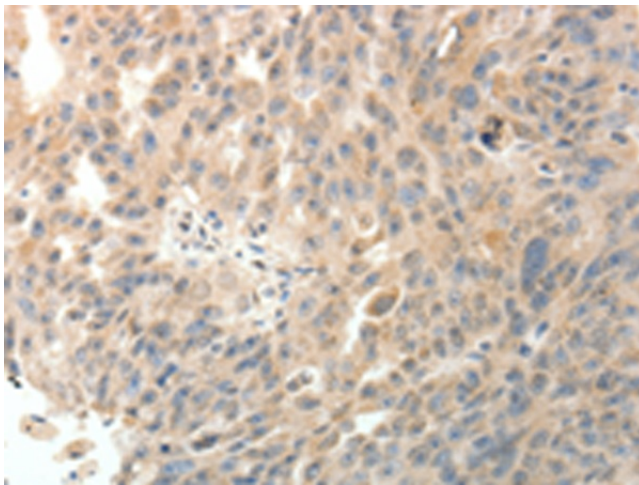
The protein encoded by this gene is a member of the parathyroid hormone family. This hormone regulates endochondral bone development and epithelial-mesenchymal interactions during the formation of the mammary glands and teeth. This hormone is involved in lactation possibly by regulating the mobilization and transfer of calcium to the milk. The receptor of this hormone; PTHR1; is responsible for most cases of humoral hypercalcemia of malignancy. Four alternatively spliced transcript variants encoding two distinct isoforms have been observed. There is also evidence for alternative translation initiation from non-AUG (CUG and GUG) start sites; in-frame and downstream of the initiator AUG codon; to give rise to nuclear forms of this hormone.

**Synonyms:**

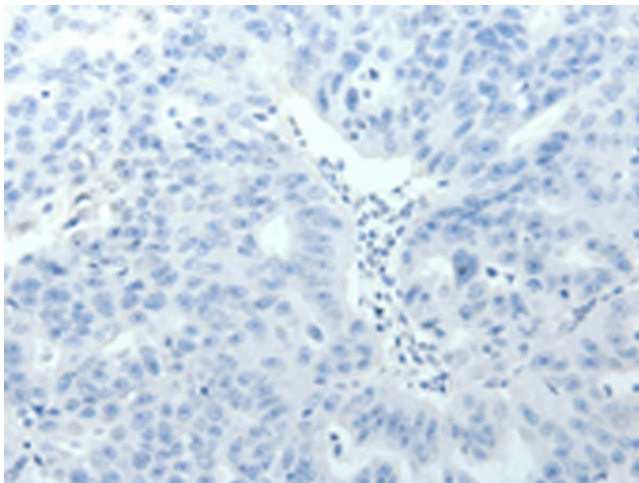
BDE2; HHM; PLP; PTHR; PTHRP

**Protein Families:**

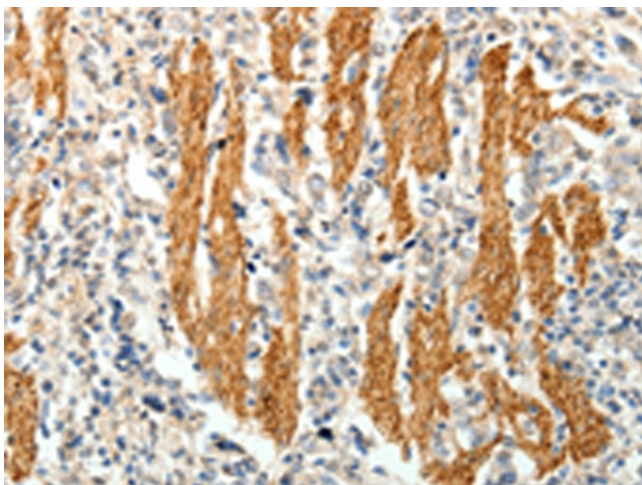
Druggable Genome, Secreted Protein

**Product images:**

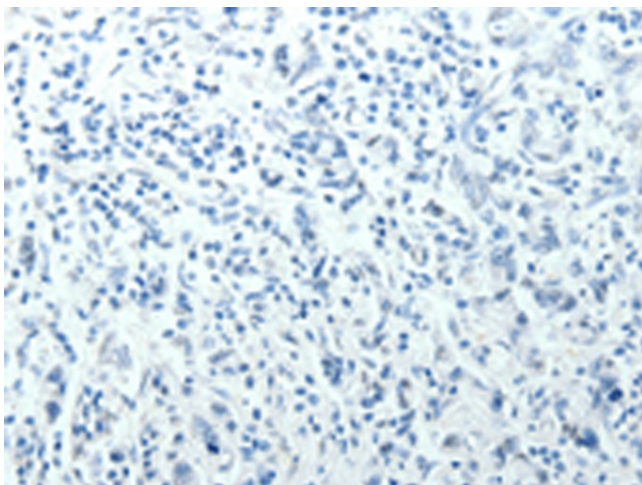
Immunohistochemistry of paraffin-embedded Human ovarian cancer tissue using TA321532 (PTH LH Antibody) at dilution 1/20 (Original magnification:  $\times 200$ )



Immunohistochemistry of paraffin-embedded Human ovarian cancer tissue using TA321532 (PTH LH Antibody) at dilution 1/20, treated with fusion protein. (Original magnification:  $\times 200$ )



Immunohistochemistry of paraffin-embedded Human gastric cancer tissue using TA321532 (PTHrH Antibody) at dilution 1/20 (Original magnification:  $\times 200$ )



Immunohistochemistry of paraffin-embedded Human gastric cancer tissue using TA321532 (PTHrH Antibody) at dilution 1/20, treated with fusion protein. (Original magnification:  $\times 200$ )