

Product datasheet for **TA321531S**

PSMD3 Rabbit Polyclonal Antibody

Product data:

Product Type:	Primary Antibodies
Applications:	IHC, WB
Recommended Dilution:	WB: 200-1000 WB positive control: NIH/3T3 cells and human fetal kidney tissue IHC: 25-100 Positive control: Human colon cancer Predicted cell location: Cytoplasm, Nucleus
Reactivity:	Human, Mouse
Host:	Rabbit
Isotype:	IgG
Clonality:	Polyclonal
Immunogen:	Fusion protein corresponding to C terminal 250 amino acids of human proteasome (prosome, macropain) 26S subunit, non-ATPase, 3
Formulation:	PBS pH7.3, 0.05% NaN ₃ , 50% glycerol
Purification:	Antigen affinity purification
Conjugation:	Unconjugated
Storage:	Store at -20°C as received.
Stability:	Stable for 12 months from date of receipt.
Predicted Protein Size:	61 kDa
Gene Name:	proteasome 26S subunit, non-ATPase 3
Database Link:	NP_002800 Entrez Gene 22123 Mouse Entrez Gene 5709 Human O43242



[View online »](#)

Background:

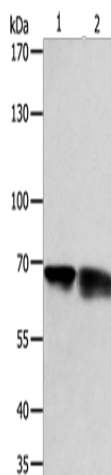
The 26S proteasome is a multicatalytic proteinase complex with a highly ordered structure composed of 2 complexes, a 20S core and a 19S regulator. The 20S core is composed of 4 rings of 28 non-identical subunits; 2 rings are composed of 7 alpha subunits and 2 rings are composed of 7 beta subunits. The 19S regulator is composed of a base, which contains 6 ATPase subunits and 2 non-ATPase subunits, and a lid, which contains up to 10 non-ATPase subunits. Proteasomes are distributed throughout eukaryotic cells at a high concentration and cleave peptides in an ATP/ubiquitin-dependent process in a non-lysosomal pathway. This gene encodes a member of the proteasome subunit S3 family that functions as one of the non-ATPase subunits of the 19S regulator lid. Single nucleotide polymorphisms in this gene are associated with neutrophil count.?

Synonyms:

P58; RPN3; S3; TSTA2

Protein Pathways:

Proteasome

Product images:

Gel: 10%SDS-PAGE

Lysate: 50 µg

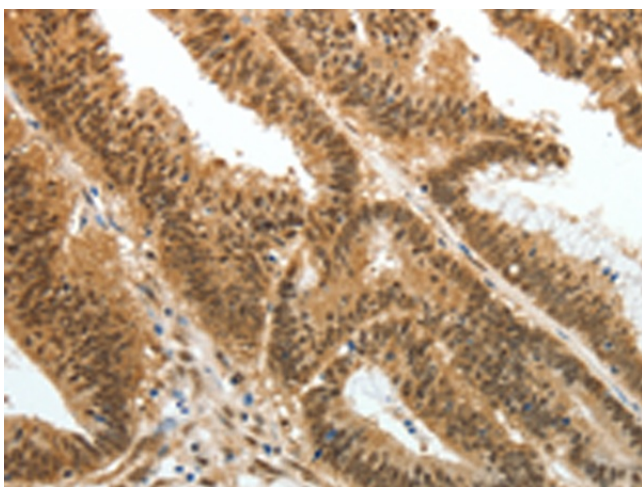
Lane 1-2: NIH/3T3 cells

human fetal kidney tissue

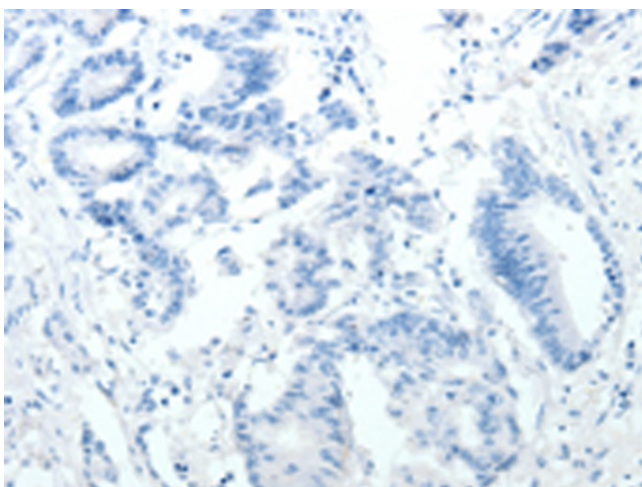
Primary antibody: [TA321531] (PSMD3 Antibody)
at dilution 1/300

Secondary antibody: Goat anti rabbit IgG at
1/8000 dilution

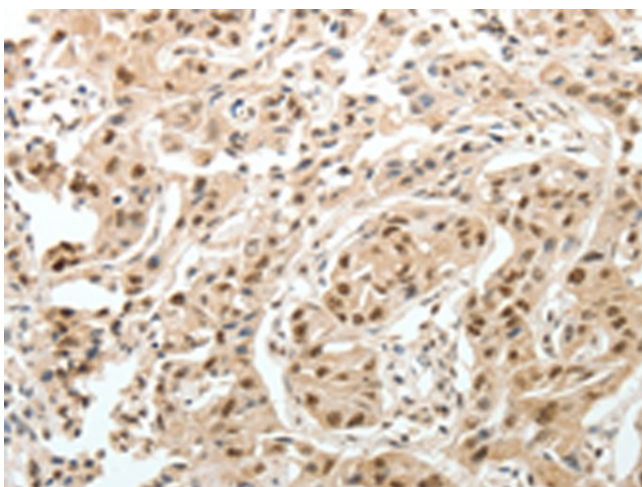
Exposure time: 1 minute



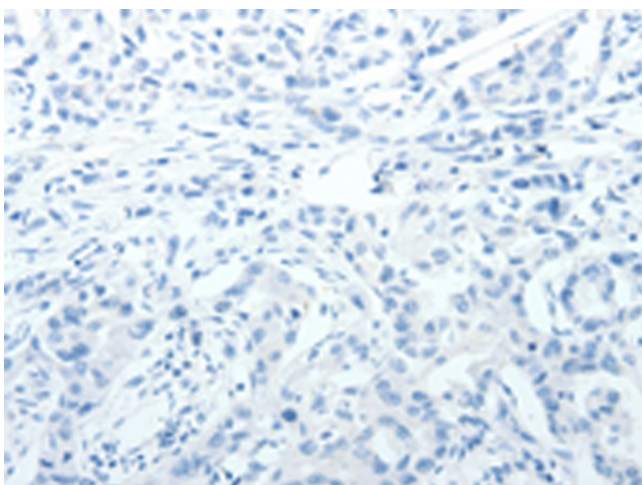
Immunohistochemistry of paraffin-embedded
Human colon cancer tissue using [TA321531]
(PSMD3 Antibody) at dilution 1/25 (Original
magnification: ×200)



Immunohistochemistry of paraffin-embedded Human colon cancer tissue using [TA321531] (PSMD3 Antibody) at dilution 1/25, treated with fusion protein. (Original magnification: $\times 200$)



Immunohistochemistry of paraffin-embedded Human lung cancer tissue using [TA321531] (PSMD3 Antibody) at dilution 1/25 (Original magnification: $\times 200$)



Immunohistochemistry of paraffin-embedded Human lung cancer tissue using [TA321531] (PSMD3 Antibody) at dilution 1/25, treated with fusion protein. (Original magnification: $\times 200$)