

## Product datasheet for **TA321528S**

### PSMD3 Rabbit Polyclonal Antibody

#### Product data:

Product Type:	Primary Antibodies
Applications:	IHC, WB
Recommended Dilution:	WB: 200-1000 WB positive control: Hela and Jurkat cells IHC: 50-200 Positive control: Human brain Predicted cell location: Cytoplasm, Nucleus
Reactivity:	Human, Mouse
Host:	Rabbit
Isotype:	IgG
Clonality:	Polyclonal
Immunogen:	Fusion protein corresponding to C terminal 250 amino acids of human proteasome (prosome, macropain) 26S subunit, non-ATPase, 3
Formulation:	PBS pH7.3, 0.05% NaN <sub>3</sub> , 50% glycerol
Purification:	Antigen affinity purification
Conjugation:	Unconjugated
Storage:	Store at -20°C as received.
Stability:	Stable for 12 months from date of receipt.
Predicted Protein Size:	61 kDa
Gene Name:	proteasome 26S subunit, non-ATPase 3
Database Link:	<a href="#">NP_002800</a> <a href="#">Entrez Gene 22123 Mouse</a> <a href="#">Entrez Gene 5709 Human</a> <a href="#">O43242</a>



[View online »](#)

**Background:**

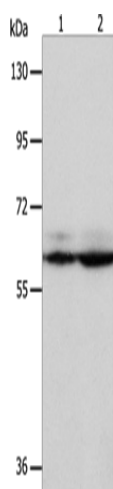
The 26S proteasome is a multicatalytic proteinase complex with a highly ordered structure composed of 2 complexes; a 20S core and a 19S regulator. The 20S core is composed of 4 rings of 28 non-identical subunits; 2 rings are composed of 7 alpha subunits and 2 rings are composed of 7 beta subunits. The 19S regulator is composed of a base; which contains 6 ATPase subunits and 2 non-ATPase subunits; and a lid; which contains up to 10 non-ATPase subunits. Proteasomes are distributed throughout eukaryotic cells at a high concentration and cleave peptides in an ATP/ubiquitin-dependent process in a non-lysosomal pathway. This gene encodes a member of the proteasome subunit S3 family that functions as one of the non-ATPase subunits of the 19S regulator lid. Single nucleotide polymorphisms in this gene are associated with neutrophil count.

**Synonyms:**

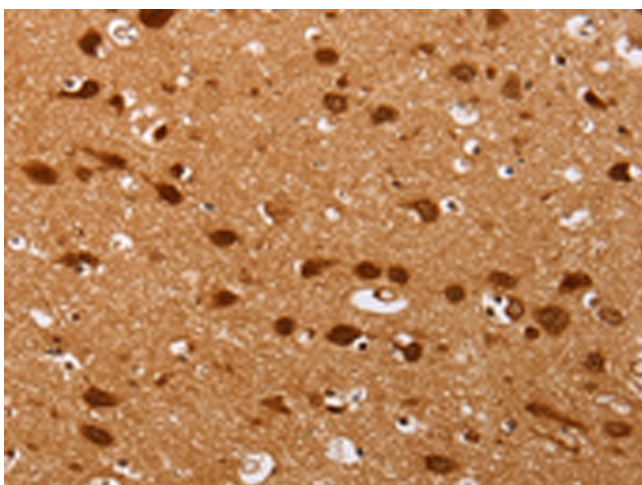
P58; RPN3; S3; TSTA2

**Protein Pathways:**

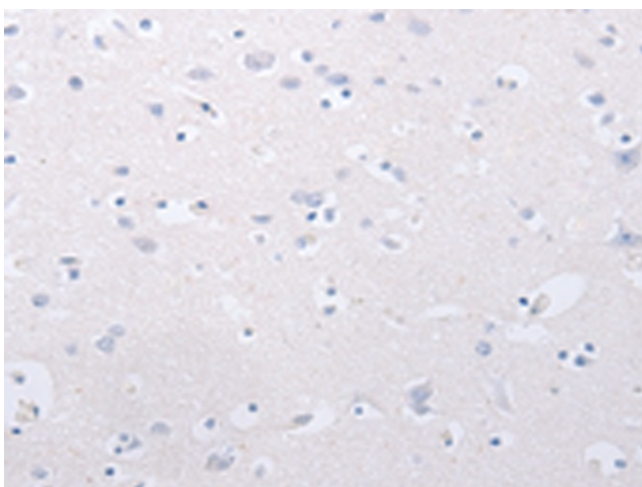
Proteasome

**Product images:**

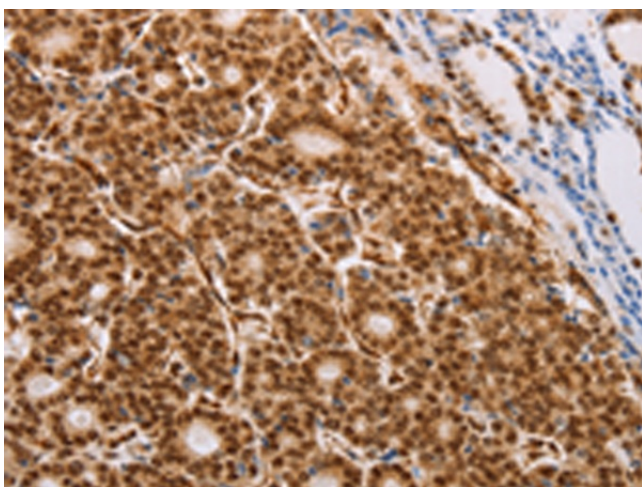
Gel: 8%SDS-PAGE  
Lysate: 40 µg  
Lane 1-2: HeLa cells  
Jurkat cells  
Primary antibody: [TA321528] (PSMD3 Antibody)  
at dilution 1/300  
Secondary antibody: Goat anti rabbit IgG at  
1/8000 dilution  
Exposure time: 5 seconds



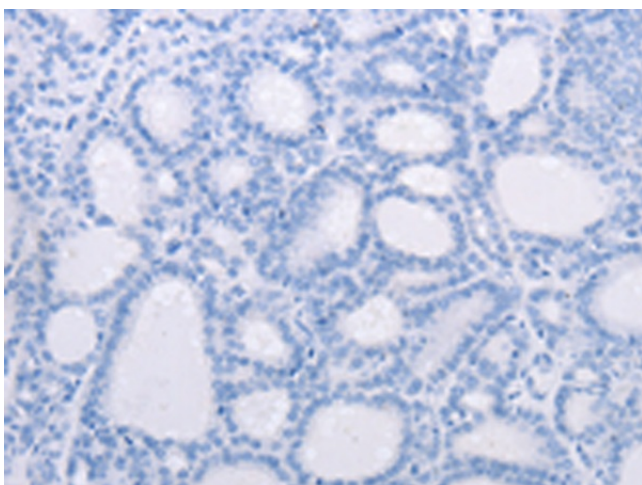
Immunohistochemistry of paraffin-embedded  
Human brain tissue using [TA321528] (PSMD3  
Antibody) at dilution 1/25 (Original magnification:  
×200)



Immunohistochemistry of paraffin-embedded Human brain tissue using [TA321528] (PSMD3 Antibody) at dilution 1/25, treated with fusion protein. (Original magnification: x200)



Immunohistochemistry of paraffin-embedded Human thyroid cancer tissue using [TA321528] (PSMD3 Antibody) at dilution 1/25 (Original magnification: x200)



Immunohistochemistry of paraffin-embedded Human thyroid cancer tissue using [TA321528] (PSMD3 Antibody) at dilution 1/25, treated with fusion protein. (Original magnification: x200)