

## Product datasheet for **TA321526**

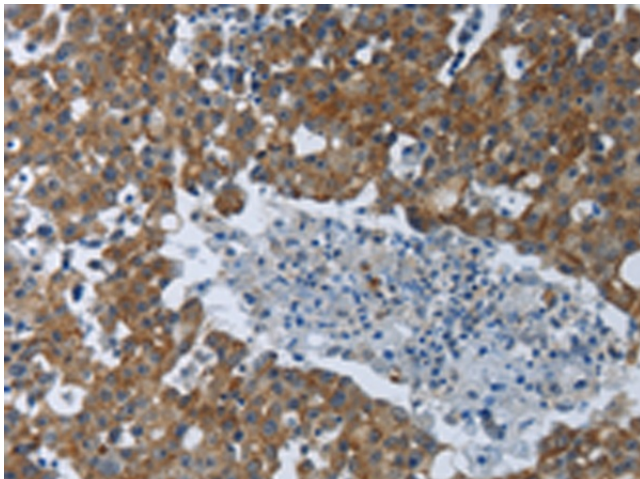
### PKR (EIF2AK2) Rabbit Polyclonal Antibody

#### Product data:

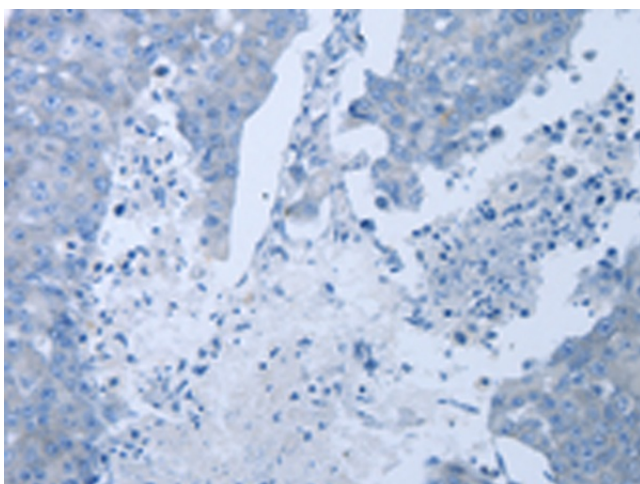
Product Type:	Primary Antibodies
Applications:	IHC
Recommended Dilution:	IHC: 50-200 Positive control: Human breast cancer Predicted cell location: Cytoplasm
Reactivity:	Human
Host:	Rabbit
Isotype:	IgG
Clonality:	Polyclonal
Immunogen:	Synthetic peptide corresponding to a region derived from 438-451 amino acids of Human eukaryotic translation initiation factor 2-alpha kinase 2
Formulation:	PBS pH7.3, 0.05% NaN <sub>3</sub> , 50% glycerol
Concentration:	lot specific
Purification:	Antigen affinity purification
Conjugation:	Unconjugated
Storage:	Store at -20°C as received.
Stability:	Stable for 12 months from date of receipt.
Gene Name:	eukaryotic translation initiation factor 2 alpha kinase 2
Database Link:	<a href="#">NP_002750</a> <a href="#">Entrez Gene 5610 Human P19525</a>
Background:	The protein encoded by this gene is a serine/threonine protein kinase that is activated by autophosphorylation after binding to dsRNA. The activated form of the encoded protein can phosphorylate translation initiation factor EIF2S1; which in turn inhibits protein synthesis. This protein is also activated by manganese ions and heparin. Three transcript variants encoding two different isoforms have been found for this gene
Synonyms:	EIF2AK1; PKR; PPP1R83; PRKR
Protein Families:	Druggable Genome, Protein Kinase, Transcription Factors



[View online »](#)

**Product images:**

Immunohistochemistry of paraffin-embedded Human breast cancer tissue using TA321526 (EIF2AK2 Antibody) at dilution 1/60 (Original magnification:  $\times 200$ )



Immunohistochemistry of paraffin-embedded Human breast cancer tissue using TA321526 (EIF2AK2 Antibody) at dilution 1/60, treated with synthetic peptide. (Original magnification:  $\times 200$ )