

## Product datasheet for **TA321524**

### MEK6 (MAP2K6) Rabbit Polyclonal Antibody

#### Product data:

Product Type:	Primary Antibodies
Applications:	IHC, WB
Recommended Dilution:	WB: 500-2000 WB positive control: Mouse muscle tissue IHC: 25-100 Positive control: Human liver cancer Predicted cell location: Cytoplasm
Reactivity:	Human, Mouse
Host:	Rabbit
Isotype:	IgG
Clonality:	Polyclonal
Immunogen:	Fusion protein corresponding to a region derived from 31-297 amino acids of human mitogen-activated protein kinase kinase 6
Formulation:	PBS pH7.3, 0.05% NaN <sub>3</sub> , 50% glycerol
Concentration:	lot specific
Purification:	Antigen affinity purification
Conjugation:	Unconjugated
Storage:	Store at -20°C as received.
Stability:	Stable for 12 months from date of receipt.
Predicted Protein Size:	37 kDa
Gene Name:	mitogen-activated protein kinase kinase 6
Database Link:	<a href="#">NP_002749</a> <a href="#">Entrez Gene 26399 Mouse</a> <a href="#">Entrez Gene 5608 Human</a> <a href="#">P52564</a>



[View online »](#)

**Background:**

This gene encodes a member of the dual specificity protein kinase family; which functions as a mitogen-activated protein (MAP) kinase kinase. MAP kinases; also known as extracellular signal-regulated kinases (ERKs); act as an integration point for multiple biochemical signals. This protein phosphorylates and activates p38 MAP kinase in response to inflammatory cytokines or environmental stress. As an essential component of p38 MAP kinase mediated signal transduction pathway; this gene is involved in many cellular processes such as stress induced cell cycle arrest; transcription activation and apoptosis.

**Synonyms:**

MAPKK6; MEK6; MKK6; PRKMK6; SAPKK-3; SAPKK3

**Protein Families:**

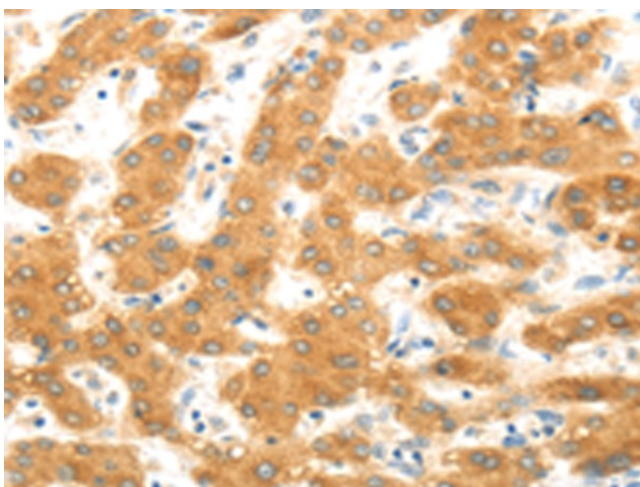
Druggable Genome, Protein Kinase

**Protein Pathways:**

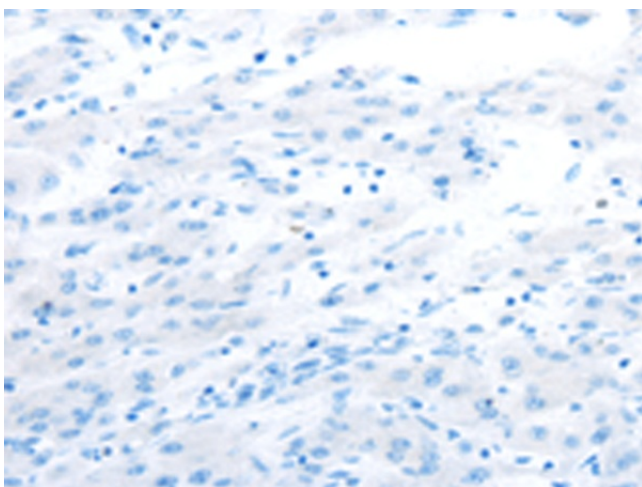
Amyotrophic lateral sclerosis (ALS), Fc epsilon RI signaling pathway, GnRH signaling pathway, MAPK signaling pathway, Toll-like receptor signaling pathway

**Product images:**

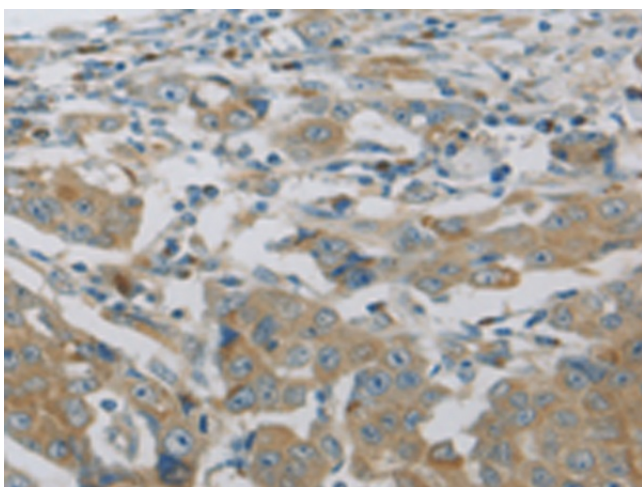
Gel: 12%SDS-PAGE  
Lysate: 30 µg  
Lane: Mouse muscle tissue  
Primary antibody: TA321524 (MAP2K6 Antibody) at dilution 1/500  
Secondary antibody: Goat anti rabbit IgG at 1/8000 dilution  
Exposure time: 20 seconds



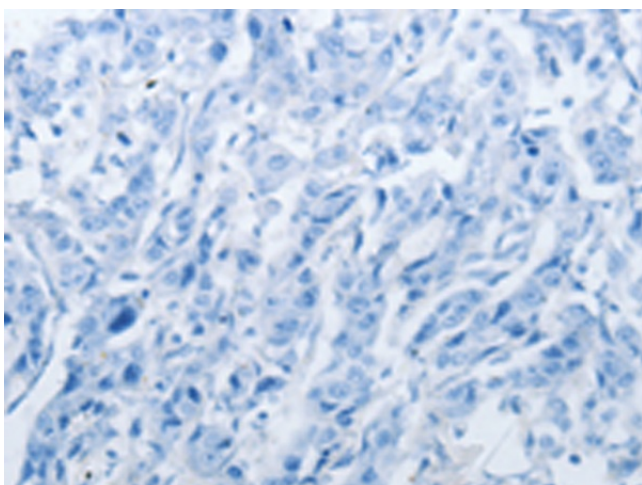
Immunohistochemistry of paraffin-embedded Human liver cancer tissue using TA321524 (MAP2K6 Antibody) at dilution 1/30 (Original magnification: ×200)



Immunohistochemistry of paraffin-embedded Human liver cancer tissue using TA321524 (MAP2K6 Antibody) at dilution 1/30, treated with fusion protein. (Original magnification:  $\times 200$ )



Immunohistochemistry of paraffin-embedded Human breast cancer tissue using TA321524 (MAP2K6 Antibody) at dilution 1/30 (Original magnification:  $\times 200$ )



Immunohistochemistry of paraffin-embedded Human breast cancer tissue using TA321524 (MAP2K6 Antibody) at dilution 1/30, treated with fusion protein. (Original magnification:  $\times 200$ )