

## Product datasheet for **TA321511S**

### PCNA Rabbit Polyclonal Antibody

#### Product data:

Product Type:	Primary Antibodies
Applications:	IHC, WB
Recommended Dilution:	WB: 500-2000 WB positive control: Hela cells IHC: 50-200 Positive control: Human gastric cancer Predicted cell location: Cytoplasm, Nucleus
Reactivity:	Human, Mouse, Rat
Host:	Rabbit
Isotype:	IgG
Clonality:	Polyclonal
Immunogen:	Fusion protein corresponding to a region derived from 9-252 amino acids of Human Proliferating cell nuclear antigen
Formulation:	PBS pH7.3, 0.05% NaN <sub>3</sub> , 50% glycerol
Purification:	Antigen affinity purification
Conjugation:	Unconjugated
Storage:	Store at -20°C as received.
Stability:	Stable for 12 months from date of receipt.
Predicted Protein Size:	29 kDa
Gene Name:	proliferating cell nuclear antigen
Database Link:	<a href="#">NP_002583</a> <a href="#">Entrez Gene 18538 Mouse</a> <a href="#">Entrez Gene 25737 Rat</a> <a href="#">Entrez Gene 5111 Human</a> <a href="#">P12004</a>



[View online »](#)

**Background:** The protein encoded by this gene is found in the nucleus and is a cofactor of DNA polymerase delta. The encoded protein acts as a homotrimer and helps increase the processivity of leading strand synthesis during DNA replication. In response to DNA damage; this protein is ubiquitinated and is involved in the RAD6-dependent DNA repair pathway. Two transcript variants encoding the same protein have been found for this gene. Pseudogenes of this gene have been described on chromosome 4 and on the X chromosome

**Synonyms:** ATLD2

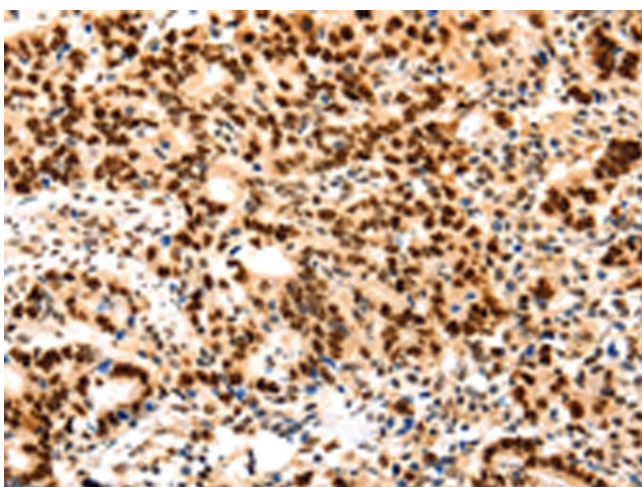
**Protein Families:** Druggable Genome, Stem cell - Pluripotency

**Protein Pathways:** Base excision repair, Cell cycle, DNA replication, Mismatch repair, Nucleotide excision repair

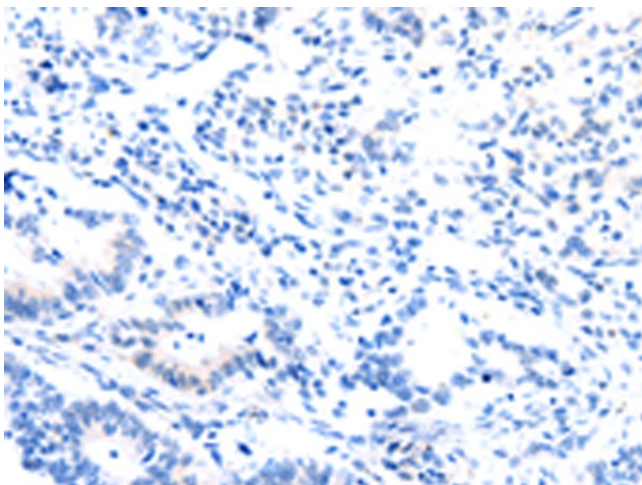
### Product images:



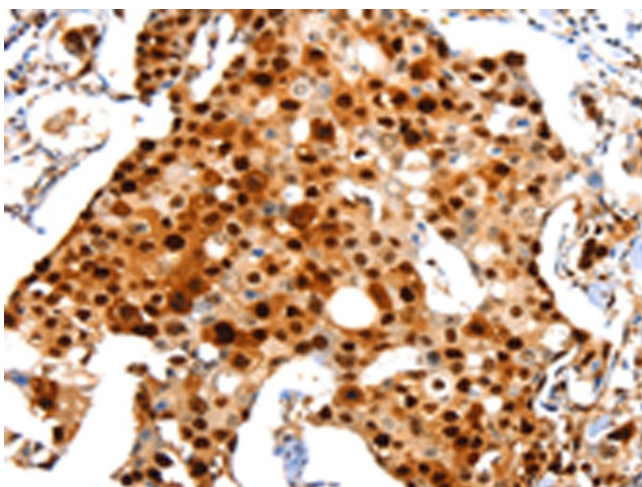
Gel: 10%SDS-PAGE  
Lysate: 40  $\mu$ g  
Lane: HeLa cells  
Primary antibody: [TA321511] (PCNA Antibody) at dilution 1/500  
Secondary antibody: Goat anti rabbit IgG at 1/8000 dilution  
Exposure time: 1 minute



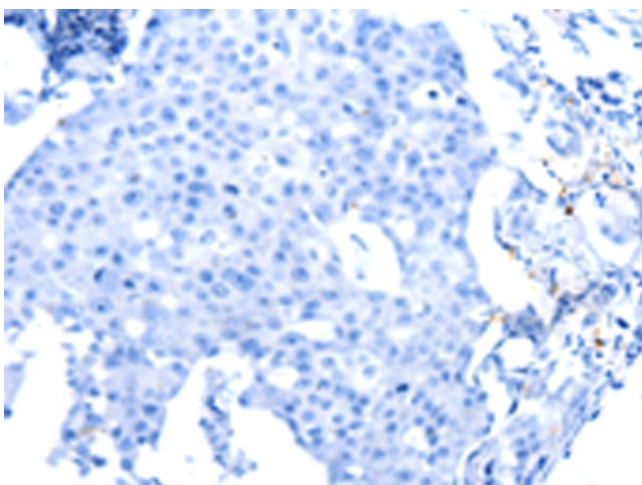
Immunohistochemistry of paraffin-embedded Human gastric cancer tissue using [TA321511] (PCNA Antibody) at dilution 1/44 (Original magnification:  $\times$ 200)



Immunohistochemistry of paraffin-embedded Human gastric cancer tissue using [TA321511] (PCNA Antibody) at dilution 1/44, treated with fusion protein. (Original magnification:  $\times 200$ )



Immunohistochemistry of paraffin-embedded Human breast cancer tissue using [TA321511] (PCNA Antibody) at dilution 1/44 (Original magnification:  $\times 200$ )



Immunohistochemistry of paraffin-embedded Human breast cancer tissue using [TA321511] (PCNA Antibody) at dilution 1/44, treated with fusion protein. (Original magnification:  $\times 200$ )