

## Product datasheet for **TA321510**

### **PEDF (SERPINF1) Rabbit Polyclonal Antibody**

#### **Product data:**

Product Type:	Primary Antibodies
Applications:	WB
Recommended Dilution:	WB: 200-1000 WB positive control: 293T cells
Reactivity:	Human, Mouse
Host:	Rabbit
Isotype:	IgG
Clonality:	Polyclonal
Immunogen:	Fusion protein corresponding to C terminal 243 amino acids of human serpin peptidase inhibitor, clade F (alpha-2 antiplasmin, pigment epithelium derived factor), member 1
Formulation:	PBS pH7.3, 0.05% NaN <sub>3</sub> , 50% glycerol
Concentration:	lot specific
Purification:	Antigen affinity purification
Conjugation:	Unconjugated
Storage:	Store at -20°C as received.
Stability:	Stable for 12 months from date of receipt.
Predicted Protein Size:	46 kDa
Gene Name:	serpin family F member 1
Database Link:	<a href="#">NP_002606</a> <a href="#">Entrez Gene 20317 Mouse</a> <a href="#">Entrez Gene 5176 Human</a> <a href="#">P36955</a>
Background:	The protein encoded by this gene is a member of the serpin family; although it does not display the serine protease inhibitory activity shown by many of the other serpin family members. The encoded protein is secreted and strongly inhibits angiogenesis. In addition; this protein is a neurotrophic factor involved in neuronal differentiation in retinoblastoma cells. Potent inhibitor of angiogenesis. As it does not undergo the S (stressed) to R (relaxed) conformational transition characteristic of active serpins; it exhibits no serine protease inhibitory activity.

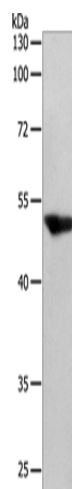


[View online »](#)

Synonyms: EPC-1; OI6; OI12; PEDF; PIG35

Protein Families: Druggable Genome, Secreted Protein

### Product images:



Gel: 10%SDS-PAGE  
Lysate: 40 µg  
Lane: 293T cells  
Primary antibody: TA321510 (SERPINF1 Antibody)  
at dilution 1/150  
Secondary antibody: Goat anti rabbit IgG at  
1/8000 dilution  
Exposure time: 1 minute