

Product datasheet for **TA321509**

PEDF (SERPINF1) Rabbit Polyclonal Antibody

Product data:

Product Type:	Primary Antibodies
Applications:	IHC, WB
Recommended Dilution:	WB: 200-1000 WB positive control: K562 cells IHC: 15-50 Positive control: Human tonsil Predicted cell location: Cytoplasm
Reactivity:	Human, Mouse
Host:	Rabbit
Isotype:	IgG
Clonality:	Polyclonal
Immunogen:	Fusion protein corresponding to C terminal 243 amino acids of human serpin peptidase inhibitor, clade F (alpha-2 antiplasmin, pigment epithelium derived factor), member 1
Formulation:	PBS pH7.3, 0.05% NaN ₃ , 50% glycerol
Concentration:	lot specific
Purification:	Antigen affinity purification
Conjugation:	Unconjugated
Storage:	Store at -20°C as received.
Stability:	Stable for 12 months from date of receipt.
Predicted Protein Size:	46 kDa
Gene Name:	serpin family F member 1
Database Link:	NP_002606 Entrez Gene 20317 Mouse Entrez Gene 5176 Human P36955



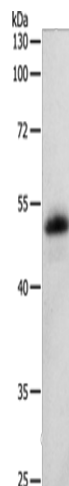
[View online »](#)

Background: The protein encoded by this gene is a member of the serpin family, although it does not display the serine protease inhibitory activity shown by many of the other serpin family members. The encoded protein is secreted and strongly inhibits angiogenesis. In addition, this protein is a neurotrophic factor involved in neuronal differentiation in retinoblastoma cells.

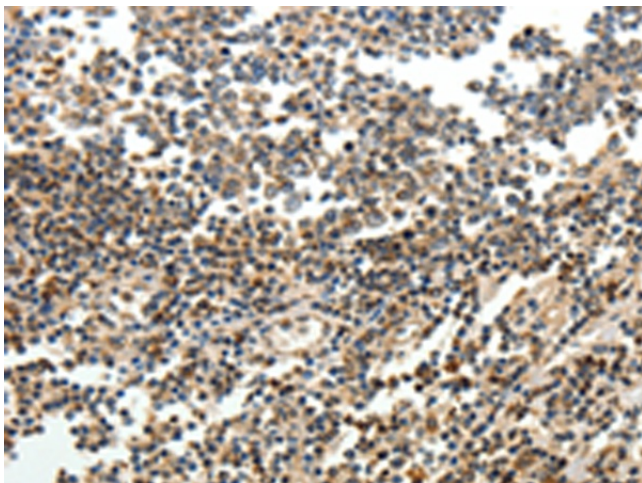
Synonyms: EPC-1; OI6; OI12; PEDF; PIG35

Protein Families: Druggable Genome, Secreted Protein

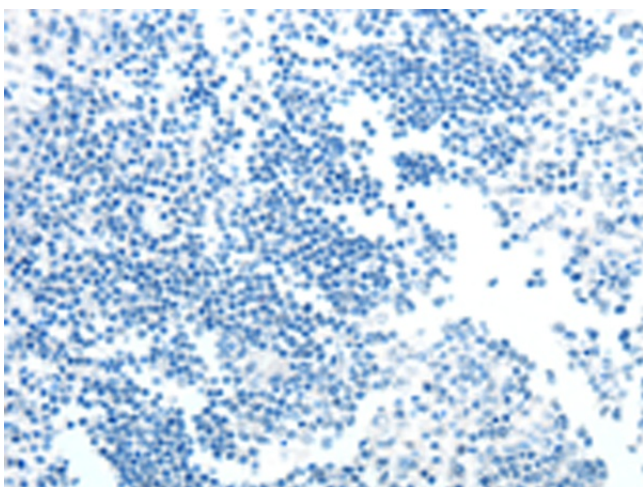
Product images:



Gel: 10%SDS-PAGE
Lysate: 40 µg
Lane: K562 cells
Primary antibody: TA321509 (SERPINF1 Antibody) at dilution 1/200
Secondary antibody: Goat anti rabbit IgG at 1/8000 dilution
Exposure time: 2 minutes



Immunohistochemistry of paraffin-embedded Human tonsil tissue using TA321509 (SERPINF1 Antibody) at dilution 1/15 (Original magnification: ×200)



Immunohistochemistry of paraffin-embedded Human tonsil tissue using TA321509 (SERPINF1 Antibody) at dilution 1/15, treated with fusion protein. (Original magnification: ×200)