

## Product datasheet for **TA321508**

### PDK4 Rabbit Polyclonal Antibody

#### Product data:

Product Type:	Primary Antibodies
Applications:	IHC, WB
Recommended Dilution:	WB: 200-1000 WB positive control: Human placenta tissue lysate IHC: 20-100 Positive control: Human tonsil Predicted cell location: Cytoplasm
Reactivity:	Human, Mouse, Rat
Host:	Rabbit
Isotype:	IgG
Clonality:	Polyclonal
Immunogen:	Synthetic peptide corresponding to a region derived from 101-113 amino acids of Human pyruvate dehydrogenase kinase, isozyme 4
Formulation:	PBS pH7.3, 0.05% NaN <sub>3</sub> , 50% glycerol
Concentration:	lot specific
Purification:	Antigen affinity purification
Conjugation:	Unconjugated
Storage:	Store at -20°C as received.
Stability:	Stable for 12 months from date of receipt.
Predicted Protein Size:	46 kDa
Gene Name:	pyruvate dehydrogenase kinase 4
Database Link:	<a href="#">NP_002603</a> <a href="#">Entrez Gene 27273 Mouse</a> <a href="#">Entrez Gene 89813 Rat</a> <a href="#">Entrez Gene 5166 Human</a> <a href="#">Q16654</a>



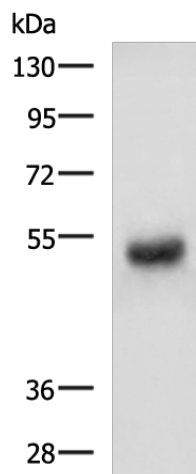
[View online »](#)

**Background:** This gene is a member of the PDK/BCKDK protein kinase family and encodes a mitochondrial protein with a histidine kinase domain. This protein is located in the matrix of the mitochondria and inhibits the pyruvate dehydrogenase complex by phosphorylating one of its subunits; thereby contributing to the regulation of glucose metabolism. Expression of this gene is regulated by glucocorticoids; retinoic acid and insulin.

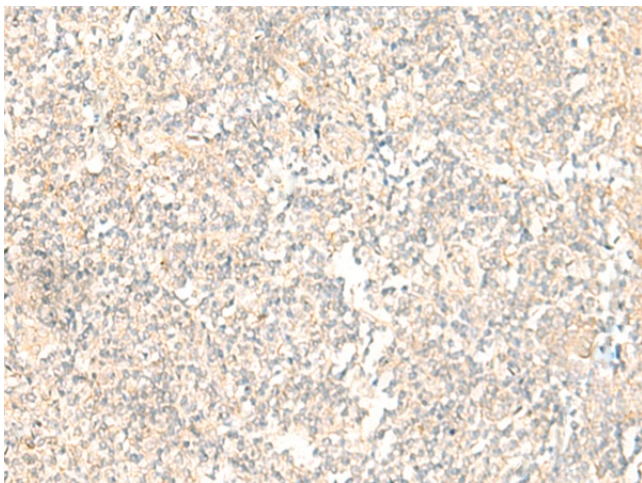
**Synonyms:** FLJ40832

**Protein Families:** Druggable Genome, Protein Kinase

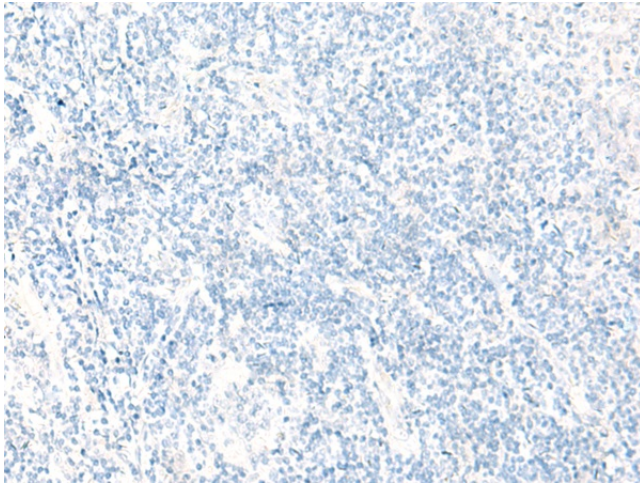
### Product images:



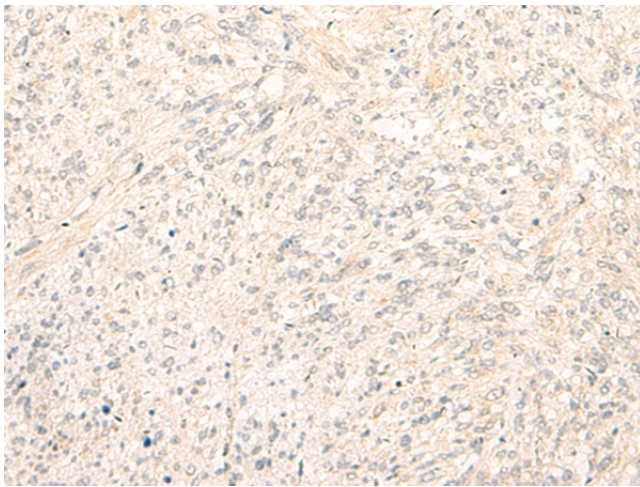
Gel: 8%SDS-PAGE  
Lysate: 40  $\mu$ g  
Lane: Human placenta tissue lysate  
Primary antibody: TA321508 (PDK4 Antibody) at dilution 1/400  
Secondary antibody: Goat anti rabbit IgG at 1/5000 dilution  
Exposure time: 3 minutes



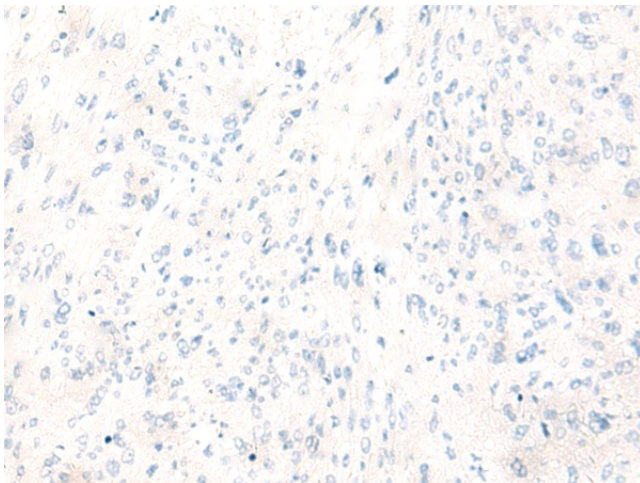
Immunohistochemistry of paraffin-embedded Human tonsil tissue using TA321508 (PDK4 Antibody) at dilution 1/20 (Original magnification:  $\times$ 200)



Immunohistochemistry of paraffin-embedded Human tonsil tissue using TA321508 (PDK4 Antibody) at dilution 1/20, treated with synthetic peptide. (Original magnification: ×200)



Immunohistochemistry of paraffin-embedded Human liver cancer tissue using TA321508 (PDK4 Antibody) at dilution 1/20 (Original magnification: ×200)



Immunohistochemistry of paraffin-embedded Human liver cancer tissue using TA321508 (PDK4 Antibody) at dilution 1/20, treated with synthetic peptide. (Original magnification: ×200)