

Product datasheet for **TA321507**

PDK4 Rabbit Polyclonal Antibody

Product data:

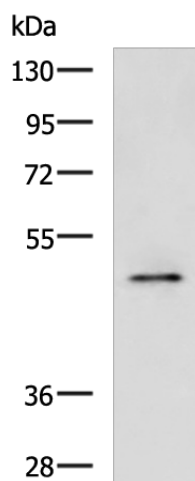
Product Type:	Primary Antibodies
Applications:	WB
Recommended Dilution:	WB: 500-2000 WB positive control: Rat heart tissue lysate
Reactivity:	Human, Mouse, Rat
Host:	Rabbit
Isotype:	IgG
Clonality:	Polyclonal
Immunogen:	Synthetic peptide corresponding to a region derived from 101-113 amino acids of Human pyruvate dehydrogenase kinase, isozyme 4
Formulation:	PBS pH7.3, 0.05% NaN ₃ , 50% glycerol
Concentration:	lot specific
Purification:	Antigen affinity purification
Conjugation:	Unconjugated
Storage:	Store at -20°C as received.
Stability:	Stable for 12 months from date of receipt.
Predicted Protein Size:	46 kDa
Gene Name:	pyruvate dehydrogenase kinase 4
Database Link:	NP_002603 Entrez Gene 27273 Mouse Entrez Gene 89813 Rat Entrez Gene 5166 Human Q16654
Background:	This gene is a member of the PDK/BCKDK protein kinase family and encodes a mitochondrial protein with a histidine kinase domain. This protein is located in the matrix of the mitochondria and inhibits the pyruvate dehydrogenase complex by phosphorylating one of its subunits; thereby contributing to the regulation of glucose metabolism. Expression of this gene is regulated by glucocorticoids; retinoic acid and insulin.
Synonyms:	FLJ40832



[View online »](#)

Protein Families: Druggable Genome, Protein Kinase

Product images:



Gel: 8%SDS-PAGE
Lysate: 40 μ g
Lane: Rat heart tissue lysate
Primary antibody: TA321507 (PDK4 Antibody) at dilution 1/600
Secondary antibody: Goat anti rabbit IgG at 1/5000 dilution
Exposure time: 30 seconds