

## Product datasheet for **TA321506S**

### PDK2 Rabbit Polyclonal Antibody

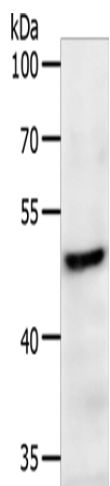
#### Product data:

|                         |  |
|-------------------------|--|
| Product Type:           | Primary Antibodies   |
| Applications:           | WB   |
| Recommended Dilution:   | WB: 200-1000<br>WB positive control: Mouse heart tissue  |
| Reactivity:             | Human, Mouse, Rat  |
| Host:                   | Rabbit   |
| Isotype:                | IgG  |
| Clonality:              | Polyclonal   |
| Immunogen:              | Synthetic peptide corresponding to a region derived from 10-24 amino acids of human pyruvate dehydrogenase kinase, isozyme 2   |
| Formulation:            | PBS pH7.3, 0.05% NaN <sub>3</sub> , 50% glycerol   |
| Purification:           | Antigen affinity purification  |
| Conjugation:            | Unconjugated   |
| Storage:                | Store at -20°C as received.  |
| Stability:              | Stable for 12 months from date of receipt.   |
| Predicted Protein Size: | 46 kDa   |
| Gene Name:              | pyruvate dehydrogenase kinase 2  |
| Database Link:          | <a href="#">NP_002602</a><br><a href="#">Entrez Gene 18604 Mouse</a> <a href="#">Entrez Gene 81530 Rat</a> <a href="#">Entrez Gene 5164 Human</a><br><a href="#">Q15119</a>  |
| Background:             | This gene encodes a member of the pyruvate dehydrogenase kinase family. The encoded protein phosphorylates pyruvate dehydrogenase; down-regulating the activity of the mitochondrial pyruvate dehydrogenase complex. Overexpression of this gene may play a role in both cancer and diabetes. Alternatively spliced transcript variants encoding multiple isoforms have been observed for this gene. |
| Synonyms:               | PDHK2; PDKII   |
| Protein Families:       | Druggable Genome, Protein Kinase   |



[View online »](#)

## Product images:



Gel: 10%SDS-PAGE  
Lysate: 50  $\mu$ g  
Lane: Mouse heart tissue  
Primary antibody: [TA321506] (PDK2 Antibody) at dilution 1/200  
Secondary antibody: Goat anti rabbit IgG at 1/8000 dilution  
Exposure time: 30 seconds