

Product datasheet for **TA321505**

PDK2 Rabbit Polyclonal Antibody

Product data:

Product Type:	Primary Antibodies
Applications:	IHC, WB
Recommended Dilution:	WB: 200-1000 WB positive control: Mouse heart tissue IHC: 50-200 Positive control: Human liver cancer Predicted cell location: Mitochondrion matrix, Cytoplasm
Reactivity:	Human, Mouse, Rat
Host:	Rabbit
Isotype:	IgG
Clonality:	Polyclonal
Immunogen:	Synthetic peptide corresponding to a region derived from 10-24 amino acids of human pyruvate dehydrogenase kinase, isozyme 2
Formulation:	PBS pH7.3, 0.05% NaN ₃ , 50% glycerol
Concentration:	lot specific
Purification:	Antigen affinity purification
Conjugation:	Unconjugated
Storage:	Store at -20°C as received.
Stability:	Stable for 12 months from date of receipt.
Predicted Protein Size:	46 kDa
Gene Name:	pyruvate dehydrogenase kinase 2
Database Link:	NP_002602 Entrez Gene 18604 Mouse Entrez Gene 81530 Rat Entrez Gene 5164 Human Q15119



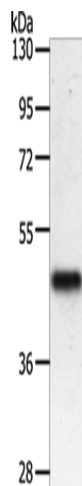
[View online »](#)

Background: This gene encodes a member of the pyruvate dehydrogenase kinase family. The encoded protein phosphorylates pyruvate dehydrogenase; down-regulating the activity of the mitochondrial pyruvate dehydrogenase complex. Overexpression of this gene may play a role in both cancer and diabetes. Alternatively spliced transcript variants encoding multiple isoforms have been observed for this gene.

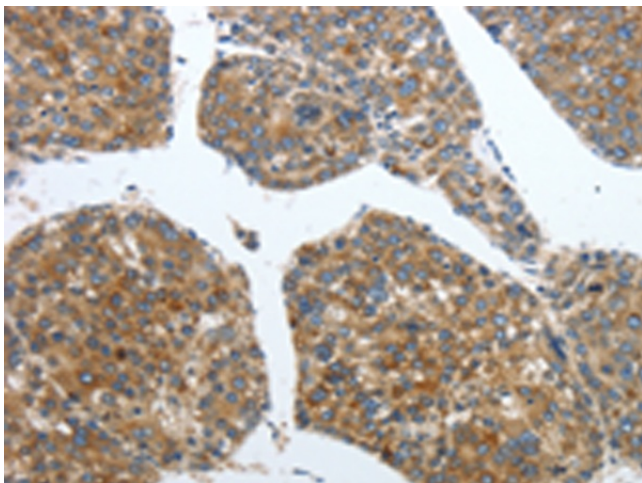
Synonyms: PDHK2; PDKII

Protein Families: Druggable Genome, Protein Kinase

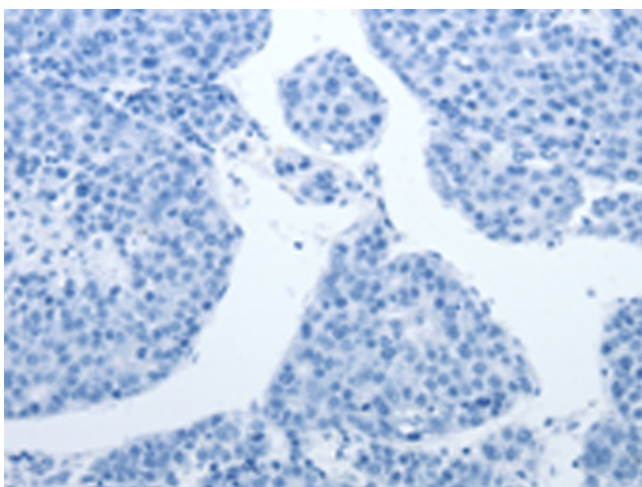
Product images:



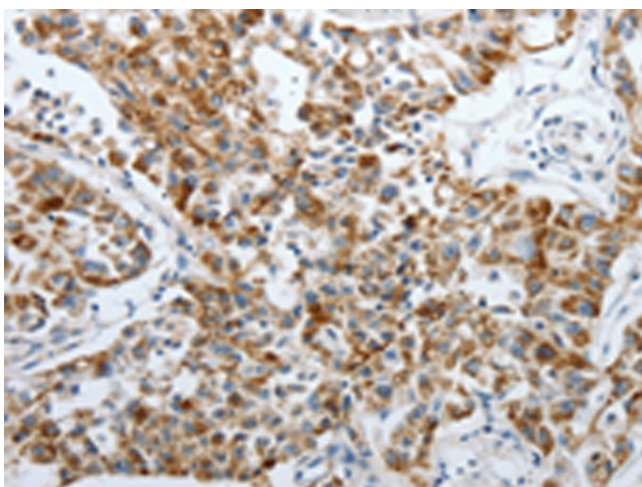
Gel: 10%SDS-PAGE
Lysate: 50 µg
Lane: Mouse heart tissue
Primary antibody: TA321505 (PDK2 Antibody) at dilution 1/500
Secondary antibody: Goat anti rabbit IgG at 1/8000 dilution
Exposure time: 1 minute



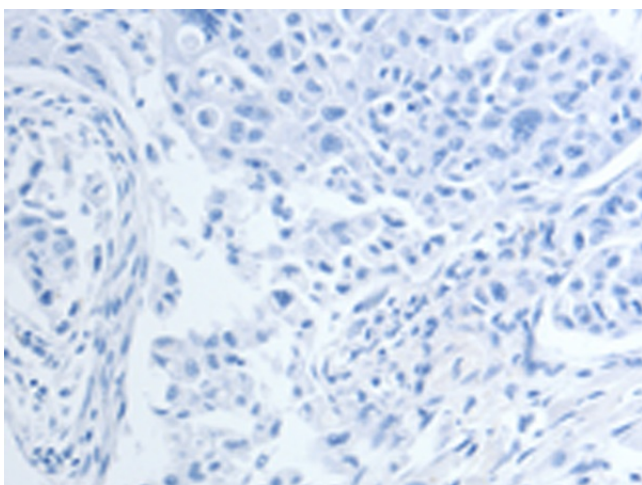
Immunohistochemistry of paraffin-embedded Human liver cancer tissue using TA321505 (PDK2 Antibody) at dilution 1/40 (Original magnification: ×200)



Immunohistochemistry of paraffin-embedded Human liver cancer tissue using TA321505 (PDK2 Antibody) at dilution 1/40, treated with synthetic peptide. (Original magnification: ×200)



Immunohistochemistry of paraffin-embedded Human lung cancer tissue using TA321505 (PDK2 Antibody) at dilution 1/40 (Original magnification: ×200)



Immunohistochemistry of paraffin-embedded Human lung cancer tissue using TA321505 (PDK2 Antibody) at dilution 1/40, treated with synthetic peptide. (Original magnification: ×200)