

## Product datasheet for **TA321501**

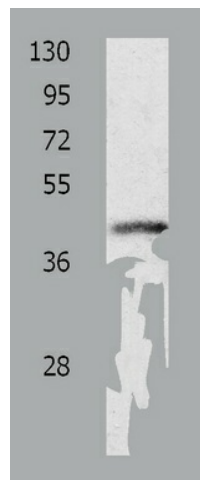
### **P2Y4 (P2RY4) Rabbit Polyclonal Antibody**

#### **Product data:**

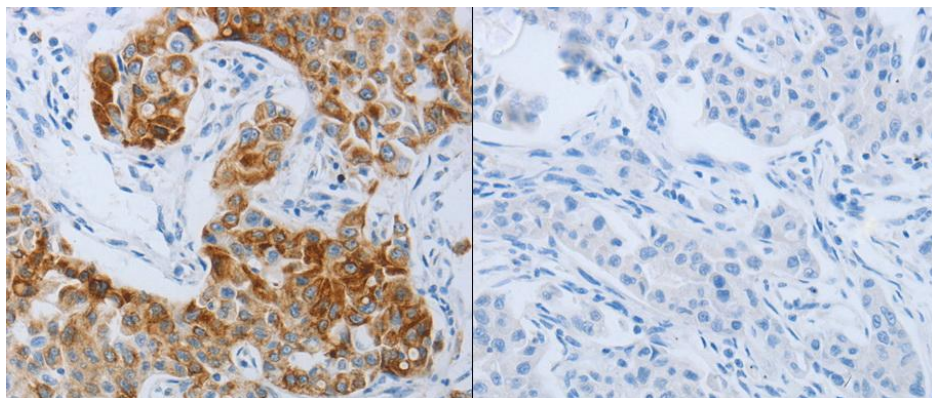
Product Type:	Primary Antibodies
Applications:	IHC, WB
Recommended Dilution:	ELISA: 1:1000-2000, WB: 1:200-1000, IHC: 1:25-100
Reactivity:	Human, Mouse, Rat
Host:	Rabbit
Isotype:	IgG
Clonality:	Polyclonal
Immunogen:	Synthetic peptide peptide corresponding to a region derived from 349-364 amino acids of human pyrimidineric receptor P2Y, G-protein coupled, 4
Formulation:	PBS pH7.3, 0.05% NaN <sub>3</sub> , 50% glycerol
Concentration:	lot specific
Purification:	Antigen affinity purification
Conjugation:	Unconjugated
Storage:	Store at -20°C as received.
Stability:	Stable for 12 months from date of receipt.
Predicted Protein Size:	41 kDa
Gene Name:	pyrimidineric receptor P2Y4
Database Link:	<a href="#">NP_002556</a> <a href="#">Entrez Gene 57385 Mouse</a> <a href="#">Entrez Gene 63843 Rat</a> <a href="#">Entrez Gene 5030 Human</a> <a href="#">P51582</a>
Background:	The product of this gene belongs to the family of G-protein coupled receptors. This family has several receptor subtypes with different pharmacological selectivity; which overlaps in some cases; for various adenosine and uridine nucleotides. This receptor is responsive to uridine nucleotides; partially responsive to ATP; and not responsive to ADP.
Synonyms:	NRU; P2P; P2Y4; UNR
Protein Families:	Druggable Genome
Protein Pathways:	Neuroactive ligand-receptor interaction



[View online »](#)

**Product images:**

Predicted band size: 41 kDa. Positive control: K562 cell lysate. Recommended dilution: 1/200-1000



Predicted cell location: Cytoplasm, Cell membrane. Positive control: Human lung cancer tissue. Recommended dilution: 1/25-100 The image on the left is immunohistochemistry of paraffin-embedded Human lung cancer tissue using P2RY4 antibody at dilution 1/30, on the right is treated with the synthetic peptide. (Original magnification: x200)