

## Product datasheet for **TA321500S**

### Ornithine Decarboxylase (ODC1) Rabbit Polyclonal Antibody

#### Product data:

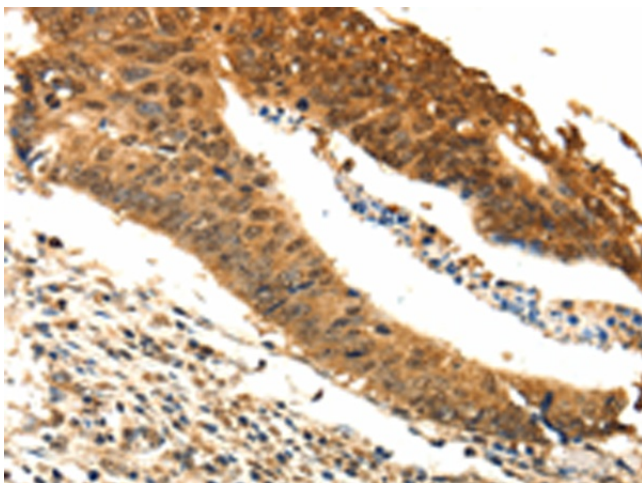
Product Type:	Primary Antibodies
Applications:	IHC
Recommended Dilution:	IHC: 25-100 Positive control: Human colon cancer Predicted cell location: Cytoplasm, Nucleus
Reactivity:	Human, Mouse, Rat
Host:	Rabbit
Isotype:	IgG
Clonality:	Polyclonal
Immunogen:	Fusion protein corresponding to C terminal 300 amino acids of human ornithine decarboxylase 1
Formulation:	PBS pH7.3, 0.05% NaN <sub>3</sub> , 50% glycerol
Purification:	Antigen affinity purification
Conjugation:	Unconjugated
Storage:	Store at -20°C as received.
Stability:	Stable for 12 months from date of receipt.
Gene Name:	ornithine decarboxylase 1
Database Link:	<a href="#">NP_002530</a> <a href="#">Entrez Gene 18263 Mouse</a> <a href="#">Entrez Gene 24609 Rat</a> <a href="#">Entrez Gene 4953 Human</a> <a href="#">P11926</a>
Background:	This gene encodes the rate-limiting enzyme of the polyamine biosynthesis pathway which catalyzes ornithine to putrescine. The activity level for the enzyme varies in response to growth-promoting stimuli and exhibits a high turnover rate in comparison to other mammalian proteins. Originally localized to both chromosomes 2 and 7; the gene encoding this enzyme has been determined to be located on 2p25; with a pseudogene located on 7q31-qter.
Synonyms:	ODC
Protein Families:	Druggable Genome



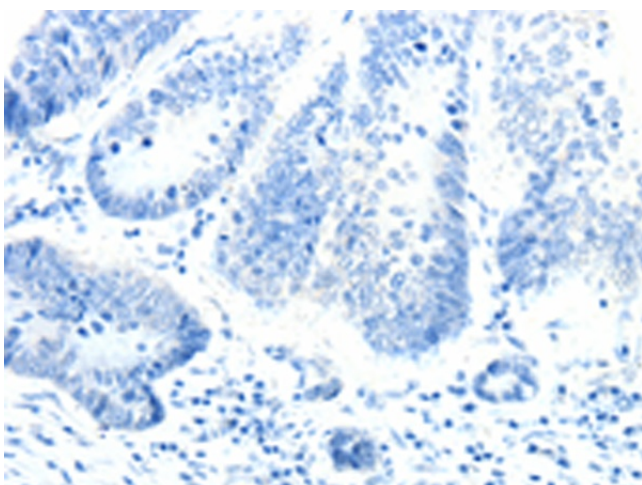
[View online »](#)

Protein Pathways: Arginine and proline metabolism, Glutathione metabolism, Metabolic pathways

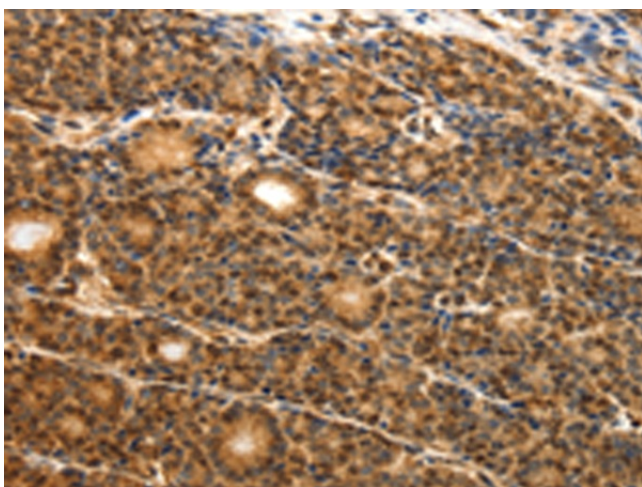
**Product images:**



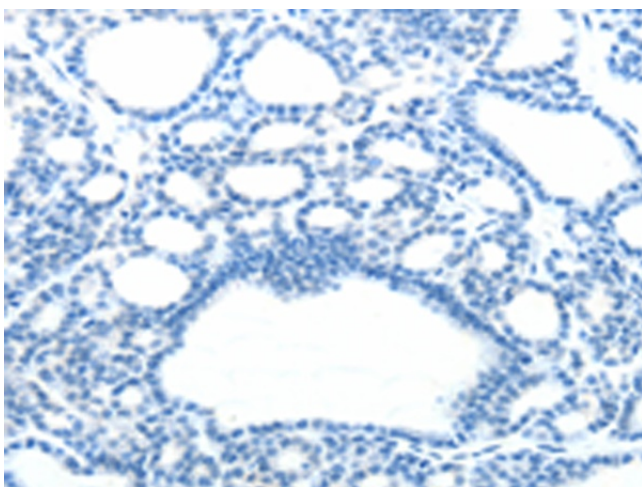
Immunohistochemistry of paraffin-embedded Human colon cancer tissue using [TA321500] (ODC1 Antibody) at dilution 1/25 (Original magnification:  $\times 200$ )



Immunohistochemistry of paraffin-embedded Human colon cancer tissue using [TA321500] (ODC1 Antibody) at dilution 1/25, treated with fusion protein. (Original magnification:  $\times 200$ )



Immunohistochemistry of paraffin-embedded Human thyroid cancer tissue using [TA321500] (ODC1 Antibody) at dilution 1/25 (Original magnification:  $\times 200$ )



Immunohistochemistry of paraffin-embedded Human thyroid cancer tissue using [TA321500] (ODC1 Antibody) at dilution 1/25, treated with fusion protein. (Original magnification:  $\times 200$ )