

Product datasheet for **TA321498S**

P2Y1 (P2RY1) Rabbit Polyclonal Antibody

Product data:

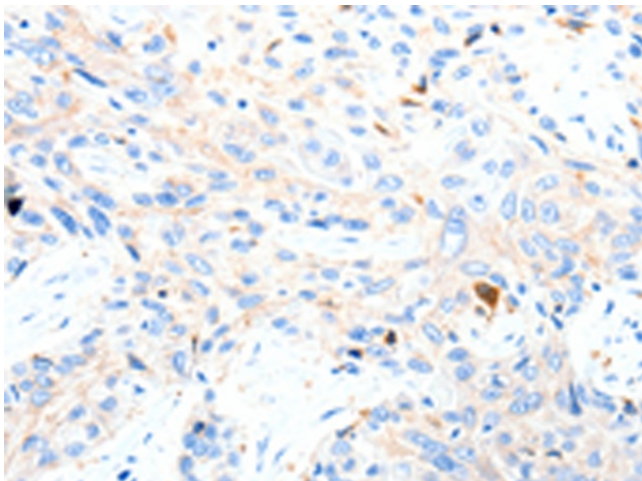
| | |
|------------------------------|---|
| Product Type: | Primary Antibodies |
| Applications: | IHC |
| Recommended Dilution: | IHC: 25-100 Positive control: Human esophagus cancer Predicted cell location: Cytoplasm |
| Reactivity: | Human, Mouse, Rat |
| Host: | Rabbit |
| Isotype: | IgG |
| Clonality: | Polyclonal |
| Immunogen: | Synthetic peptide corresponding to a region derived from 256-269 amino acids of Human purinergic receptor P2Y, G-protein coupled, 1 |
| Formulation: | PBS pH7.3, 0.05% NaN ₃ , 50% glycerol |
| Purification: | Antigen affinity purification |
| Conjugation: | Unconjugated |
| Storage: | Store at -20°C as received. |
| Stability: | Stable for 12 months from date of receipt. |
| Gene Name: | purinergic receptor P2Y1 |
| Database Link: | NP_002554 Entrez Gene 18441 Mouse Entrez Gene 25265 Rat Entrez Gene 5028 Human P47900 |
| Background: | The product of this gene belongs to the family of G-protein coupled receptors. This family has several receptor subtypes with different pharmacological selectivity; which overlaps in some cases; for various adenosine and uridine nucleotides. This receptor functions as a receptor for extracellular ATP and ADP. In platelets binding to ADP leads to mobilization of intracellular calcium ions via activation of phospholipase C; a change in platelet shape; and probably to platelet aggregation. |
| Synonyms: | P2Y1 |
| Protein Families: | Druggable Genome, GPCR, Transmembrane |



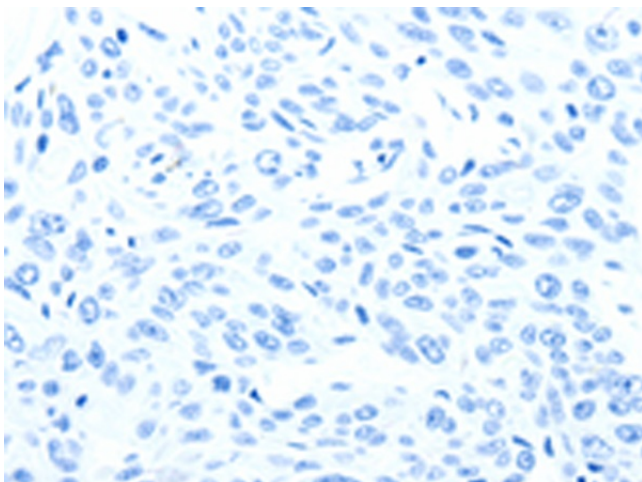
[View online »](#)

Protein Pathways: Neuroactive ligand-receptor interaction

Product images:



Immunohistochemistry of paraffin-embedded Human esophagus cancer tissue using [TA321498] (P2RY1 Antibody) at dilution 1/50 (Original magnification: $\times 200$)



Immunohistochemistry of paraffin-embedded Human esophagus cancer tissue using [TA321498] (P2RY1 Antibody) at dilution 1/50, treated with synthetic peptide. (Original magnification: $\times 200$)