

## Product datasheet for **TA321497**

### LOX 1 (OLR1) Rabbit Polyclonal Antibody

#### Product data:

Product Type:	Primary Antibodies
Applications:	IHC, WB
Recommended Dilution:	WB: 500-2000 WB positive control: Mouse brain and lung tissue IHC: 10-50 Positive control: Human brain Predicted cell location: Cytoplasm
Reactivity:	Human, Mouse
Host:	Rabbit
Isotype:	IgG
Clonality:	Polyclonal
Immunogen:	Synthetic peptide corresponding to a region derived from 2-15 amino acids of Human oxidized low density lipoprotein (lectin-like) receptor 1
Formulation:	PBS pH7.3, 0.05% NaN <sub>3</sub> , 50% glycerol
Concentration:	lot specific
Purification:	Antigen affinity purification
Conjugation:	Unconjugated
Storage:	Store at -20°C as received.
Stability:	Stable for 12 months from date of receipt.
Predicted Protein Size:	31 kDa
Gene Name:	oxidized low density lipoprotein receptor 1
Database Link:	<a href="#">NP_002534</a> <a href="#">Entrez Gene 108078 Mouse</a> <a href="#">Entrez Gene 4973 Human</a> <a href="#">P78380</a>



[View online »](#)

**Background:**

This gene encodes a low density lipoprotein receptor that belongs to the C-type lectin superfamily. This gene is regulated through the cyclic AMP signaling pathway. The encoded protein binds; internalizes and degrades oxidized low-density lipoprotein. This protein may be involved in the regulation of Fas-induced apoptosis. This protein may play a role as a scavenger receptor. Mutations of this gene have been associated with atherosclerosis; risk of myocardial infarction; and may modify the risk of Alzheimer's disease. Alternate splicing results in multiple transcript variants.

**Synonyms:**

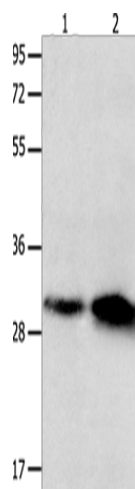
CLEC8A; LOX1; LOXIN; SCARE1; SLOX1

**Protein Families:**

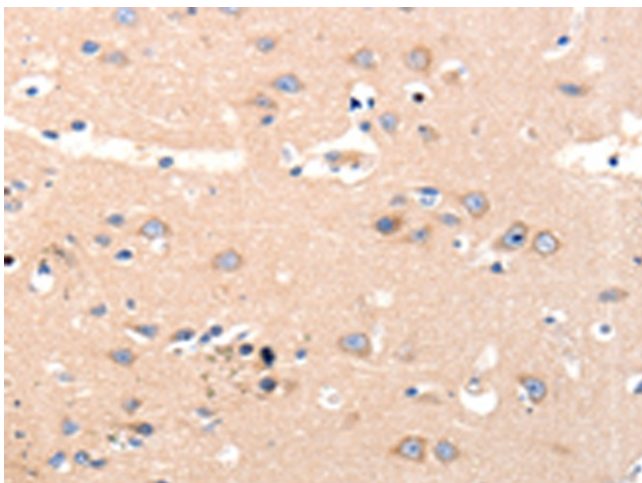
Druggable Genome, Secreted Protein, Transmembrane

**Protein Pathways:**

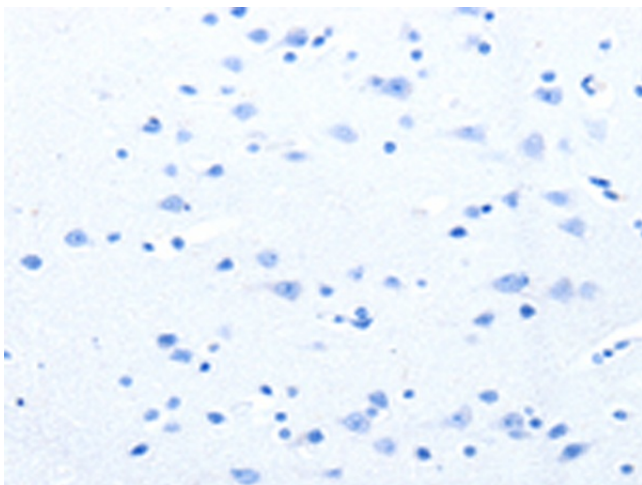
PPAR signaling pathway

**Product images:**

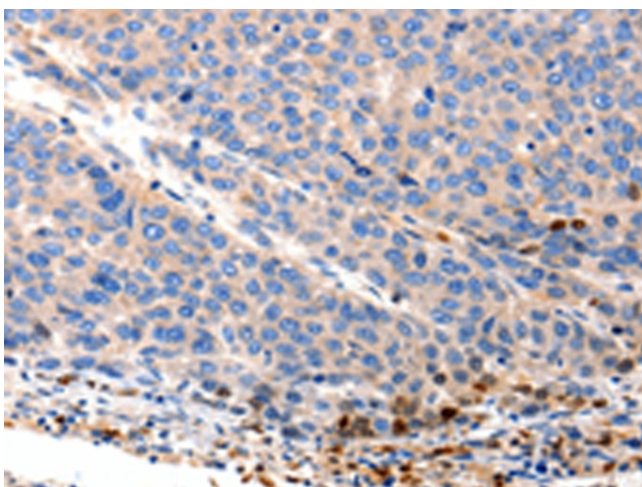
Gel: 12%SDS-PAGE  
Lysate: 40 µg  
Lane 1-2: Mouse brain tissue  
Mouse lung tissue  
Primary antibody: TA321497 (OLR1 Antibody) at dilution 1/250  
Secondary antibody: Goat anti rabbit IgG at 1/8000 dilution  
Exposure time: 30 seconds



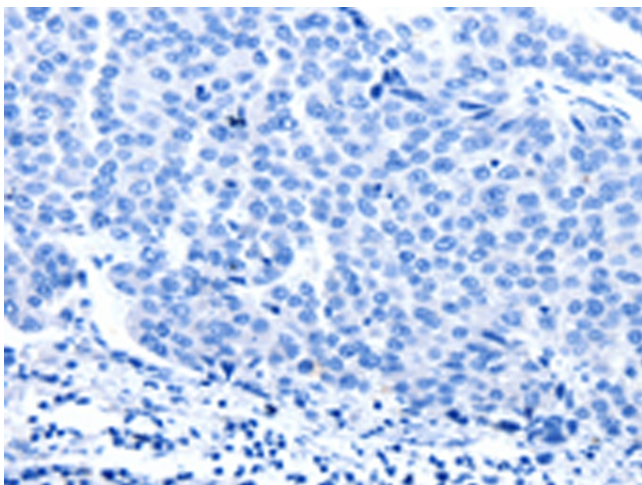
Immunohistochemistry of paraffin-embedded Human brain tissue using TA321497 (OLR1 Antibody) at dilution 1/12 (Original magnification: ×200)



Immunohistochemistry of paraffin-embedded Human brain tissue using TA321497 (OLR1 Antibody) at dilution 1/12, treated with synthetic peptide. (Original magnification:  $\times 200$ )



Immunohistochemistry of paraffin-embedded Human liver cancer tissue using TA321497 (OLR1 Antibody) at dilution 1/12 (Original magnification:  $\times 200$ )



Immunohistochemistry of paraffin-embedded Human liver cancer tissue using TA321497 (OLR1 Antibody) at dilution 1/12, treated with synthetic peptide. (Original magnification:  $\times 200$ )