

Product datasheet for **TA321494**

BNP (NPPB) Rabbit Polyclonal Antibody

Product data:

Product Type:	Primary Antibodies
Applications:	WB
Recommended Dilution:	WB: 1:500-2000
Reactivity:	Human
Host:	Rabbit
Isotype:	IgG
Clonality:	Polyclonal
Immunogen:	Full length fusion protein
Formulation:	PBS pH7.3, 0.05% NaN ₃ , 50% glycerol
Concentration:	lot specific
Purification:	Antigen affinity purification
Conjugation:	Unconjugated
Storage:	Store at -20°C as received.
Stability:	Stable for 12 months from date of receipt.
Predicted Protein Size:	15 kDa
Gene Name:	natriuretic peptide B
Database Link:	NP_002512 Entrez Gene 4879 Human P16860

Background: B-type natriuretic peptide (BNP) is a cardiac neurohormone specifically secreted from the ventricles in response to volume expansion and pressure overload. The actions of BNP include natriuresis, diuresis, vasorelaxation, and inhibition of renin and aldosterone secretion. It is also found to help restore the body's salt and water balance and improve heart function. BNP is co-secreted along with a biologically inactive N-terminal fragment (NT-proBNP). Circulating BNP and NT-proBNP provide important information on cardiac dysfunction, hypervolemia, and risk in patients with severe impairment of kidney function.

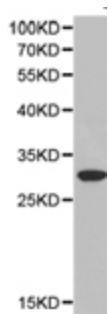
Synonyms: BNP



[View online »](#)

Protein Families: Druggable Genome, Secreted Protein, Stem cell - Pluripotency

Product images:



Predicted band size: 15 kDa. Positive control: Human plasma tissue lysate. Recommended dilution: 1/500-2000. (Gel: 12%SDS-PAGE Lysate: 40 ug Primary antibody: 1/500 dilution Secondary antibody: Goat anti Rabbit IgG - H&L (HRP) at 1/10000 dilution Exposure time: 1 minute)