

## Product datasheet for **TA321493**

### NGF Rabbit Polyclonal Antibody

#### Product data:

Product Type:	Primary Antibodies
Applications:	IHC, WB
Recommended Dilution:	WB: 500-2000 WB positive control: Hela cell lysate IHC: 50-100 Positive control: Human tonsil Predicted cell location: Secreted
Reactivity:	Human, Mouse, Rat
Host:	Rabbit
Isotype:	IgG
Clonality:	Polyclonal
Immunogen:	Synthetic peptide corresponding to a region derived from 80-94 amino acids of human nerve growth factor (beta polypeptide)
Formulation:	PBS pH7.3, 0.05% NaN <sub>3</sub> , 50% glycerol
Concentration:	lot specific
Purification:	Antigen affinity purification
Conjugation:	Unconjugated
Storage:	Store at -20°C as received.
Stability:	Stable for 12 months from date of receipt.
Predicted Protein Size:	27 kDa
Gene Name:	nerve growth factor
Database Link:	<a href="#">NP_002497</a> <a href="#">Entrez Gene 18049 Mouse</a> <a href="#">Entrez Gene 310738 Rat</a> <a href="#">Entrez Gene 4803 Human</a> <a href="#">P01138</a>



[View online »](#)

**Background:**

This gene is a member of the NGF-beta family and encodes a secreted protein which homodimerizes and is incorporated into a larger complex. This protein has nerve growth stimulating activity and the complex is involved in the regulation of growth and the differentiation of sympathetic and certain sensory neurons. Mutations in this gene have been associated with hereditary sensory and autonomic neuropathy; type 5 (HSAN5); and dysregulation of this gene's expression is associated with allergic rhinitis.

**Synonyms:**

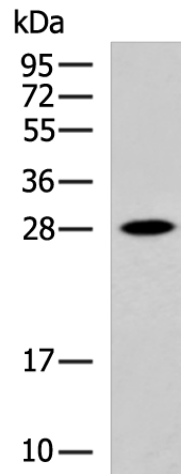
Beta-NGF; HSAN5; NGFB

**Protein Families:**

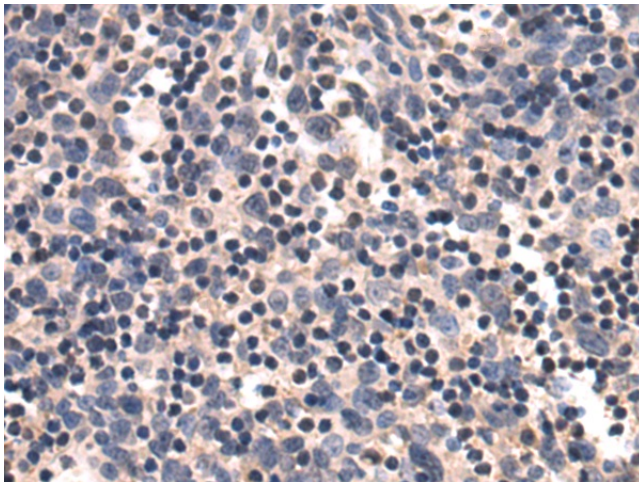
Druggable Genome, Secreted Protein

**Protein Pathways:**

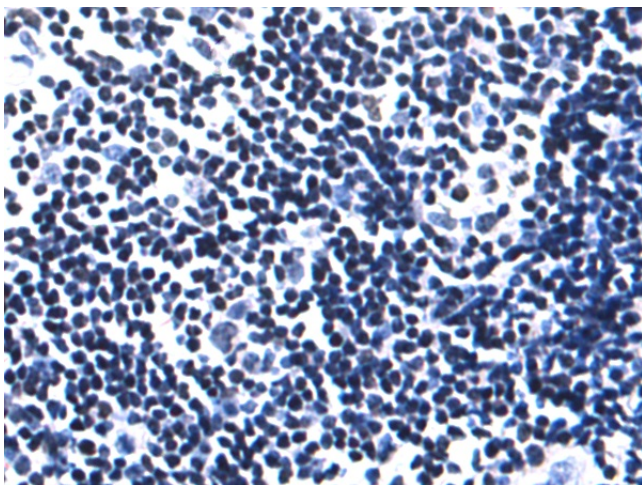
Apoptosis, MAPK signaling pathway, Neurotrophin signaling pathway

**Product images:**

Gel: 12%SDS-PAGE  
Lysate: 40  $\mu$ g  
Lane: HeLa cell lysate  
Primary antibody: TA321493 (NGF Antibody) at dilution 1/700  
Secondary antibody: Goat anti rabbit IgG at 1/5000 dilution  
Exposure time: 3 minutes



Immunohistochemistry of paraffin-embedded Human tonsil tissue using TA321493 (NGF Antibody) at dilution 1/50 (Original magnification:  $\times$ 200)



Immunohistochemistry of paraffin-embedded Human tonsil tissue using TA321493 (NGF Antibody) at dilution 1/50, treated with synthetic peptide. (Original magnification:  $\times 200$ )