

Product datasheet for **TA321491**

MYOD1 Rabbit Polyclonal Antibody

Product data:

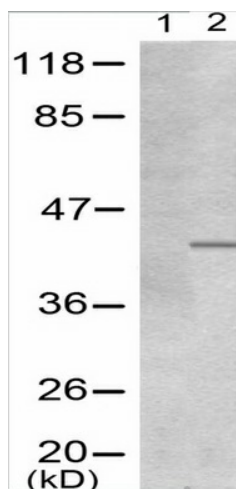
Product Type:	Primary Antibodies
Applications:	WB
Recommended Dilution:	WB: 1:500-1000
Reactivity:	Human, Mouse, Rat
Modifications:	Phospho-specific
Host:	Rabbit
Isotype:	IgG
Clonality:	Polyclonal
Immunogen:	Peptide sequence around phosphorylation site of serine 200 (A-S-S(p)-P-R) derived from Human MyoD.
Formulation:	PBS pH7.3, 0.05% NaN ₃ , 50% glycerol
Concentration:	lot specific
Purification:	Antigen affinity purification
Conjugation:	Unconjugated
Storage:	Store at -20°C as received.
Stability:	Stable for 12 months from date of receipt.
Predicted Protein Size:	40 kDa
Gene Name:	myogenic differentiation 1
Database Link:	NP_002469 Entrez Gene 17927 Mouse Entrez Gene 337868 Rat Entrez Gene 4654 Human P15172
Background:	MyoD encodes a nuclear protein that belongs to the basic helix-loop-helix family of transcription factors and the myogenic factors subfamily. It regulates muscle cell differentiation by inducing cell cycle arrest, a prerequisite for myogenic initiation. The protein is also involved in muscle regeneration. It activates its own transcription which may stabilize commitment to myogenesis.
Synonyms:	bHLHc1; MYF3; MYOD; PUM



[View online »](#)

Protein Families: Druggable Genome, Transcription Factors

Product images:



Predicted band size: 40 kDa. Positive control: HeLa cells treated with EGF lysate. Recommended dilution: 1/ 500-1000. (Gel: 10%SDS-PAGE Lane 1: HeLa cells untreated with EGF lysate Lane 2: HeLa cells treated with EGF lysate Lysates: 30 ug per lane Primary antibody: 1/500 dilution Secondary antibody: Goat anti Rabbit IgG - H&L (HRP) at 1/10000 dilution Exposure time: 1 minute)