

## Product datasheet for **TA321484S**

### MMP10 Rabbit Polyclonal Antibody

#### Product data:

Product Type:	Primary Antibodies
Applications:	IHC, WB
Recommended Dilution:	WB: 500-2000 WB positive control: NIH/3T3 cells IHC: 15-50 Positive control: Human lung cancer Predicted cell location: Cytoplasm
Reactivity:	Human, Mouse
Host:	Rabbit
Isotype:	IgG
Clonality:	Polyclonal
Immunogen:	Synthetic peptide corresponding to a region derived from 404-418 amino acids of human matrix metalloproteinase 10 (stromelysin 2)
Formulation:	PBS pH7.3, 0.05% NaN <sub>3</sub> , 50% glycerol
Purification:	Antigen affinity purification
Conjugation:	Unconjugated
Storage:	Store at -20°C as received.
Stability:	Stable for 12 months from date of receipt.
Predicted Protein Size:	54 kDa
Gene Name:	matrix metalloproteinase 10
Database Link:	<a href="#">NP_002416</a> <a href="#">Entrez Gene 17384 Mouse</a> <a href="#">Entrez Gene 4319 Human</a> <a href="#">P09238</a>



[View online »](#)

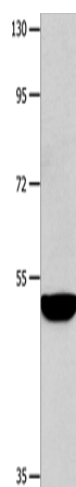
**Background:** Proteins of the matrix metalloproteinase (MMP) family are involved in the breakdown of extracellular matrix in normal physiological processes; such as embryonic development; reproduction; and tissue remodeling; as well as in disease processes; such as arthritis and metastasis. Most MMP's are secreted as inactive proproteins which are activated when cleaved by extracellular proteinases. The enzyme encoded by this gene degrades proteoglycans and fibronectin. The gene is part of a cluster of MMP genes which localize to chromosome 11q22.3.

**Synonyms:** SL-2; STMY2

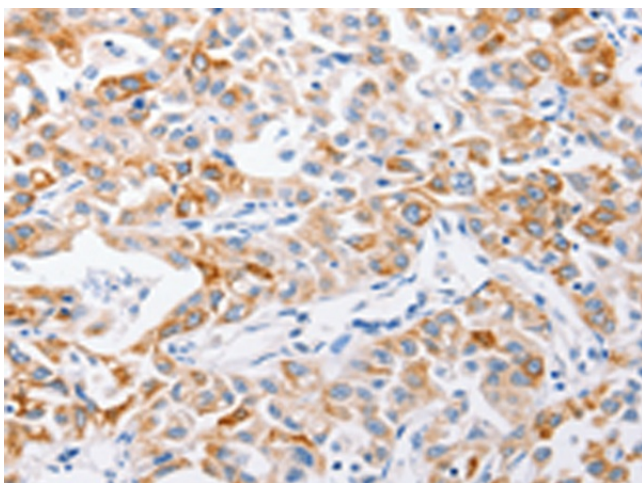
**Note:** Antibody has been shown to cross react with MMP3 protein.

**Protein Families:** Druggable Genome, Protease

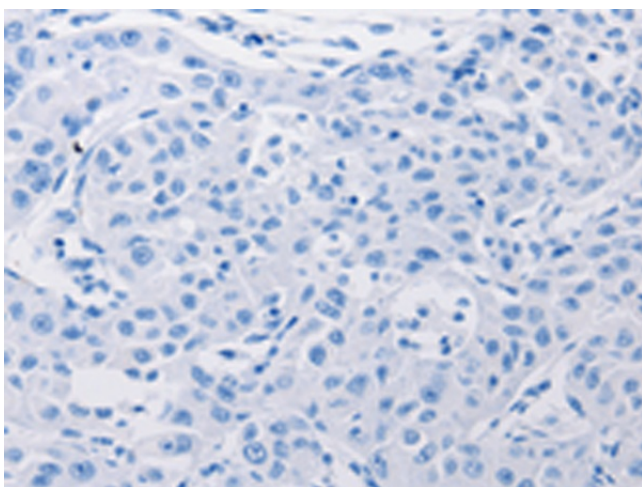
### Product images:



Gel: 8%SDS-PAGE  
Lysate: 40 µg  
Lane: NIH/3T3 cells  
Primary antibody: [TA321484] (MMP10 Antibody) at dilution 1/200  
Secondary antibody: Goat anti rabbit IgG at 1/8000 dilution  
Exposure time: 1 minute



Immunohistochemistry of paraffin-embedded Human lung cancer tissue using [TA321484] (MMP10 Antibody) at dilution 1/15 (Original magnification: ×200)



Immunohistochemistry of paraffin-embedded Human lung cancer tissue using [TA321484] (MMP10 Antibody) at dilution 1/15, treated with synthetic peptide. (Original magnification: ×200)