

## Product datasheet for **TA321482S**

### **MMP8 Rabbit Polyclonal Antibody**

#### **Product data:**

Product Type:	Primary Antibodies
Applications:	IHC, WB
Recommended Dilution:	WB: 500-2000 WB positive control: 231 cells IHC: 25-100 Positive control: Human colon cancer Predicted cell location: Cytoplasm
Reactivity:	Human
Host:	Rabbit
Isotype:	IgG
Clonality:	Polyclonal
Immunogen:	Synthetic peptide corresponding to a region derived from 122-135 amino acids of human matrix metalloproteinase 8 (neutrophil collagenase)
Formulation:	PBS pH7.3, 0.05% NaN <sub>3</sub> , 50% glycerol
Purification:	Antigen affinity purification
Conjugation:	Unconjugated
Storage:	Store at -20°C as received.
Stability:	Stable for 12 months from date of receipt.
Predicted Protein Size:	53 kDa
Gene Name:	matrix metalloproteinase 8
Database Link:	<a href="#">NP_002415</a> <a href="#">Entrez Gene 4317 Human</a> <a href="#">P22894</a>



[View online »](#)

**Background:**

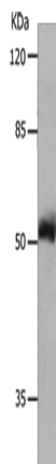
Proteins of the matrix metalloproteinase (MMP) family are involved in the breakdown of extracellular matrix in normal physiological processes; such as embryonic development; reproduction; and tissue remodeling; as well as in disease processes; such as arthritis and metastasis. Most MMP's are secreted as inactive proproteins which are activated when cleaved by extracellular proteinases. However; the enzyme encoded by this gene is stored in secondary granules within neutrophils and is activated by autolytic cleavage. Its function is degradation of type I; II and III collagens. The gene is part of a cluster of MMP genes which localize to chromosome 11q22.3.

**Synonyms:**

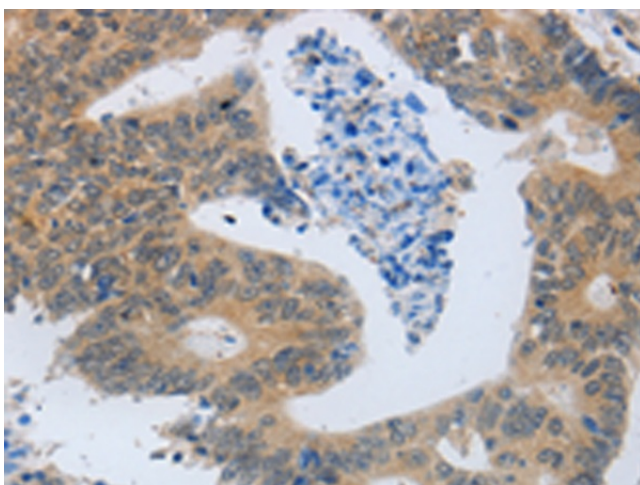
CLG1; HNC; MMP-8; PMNL-CL

**Protein Families:**

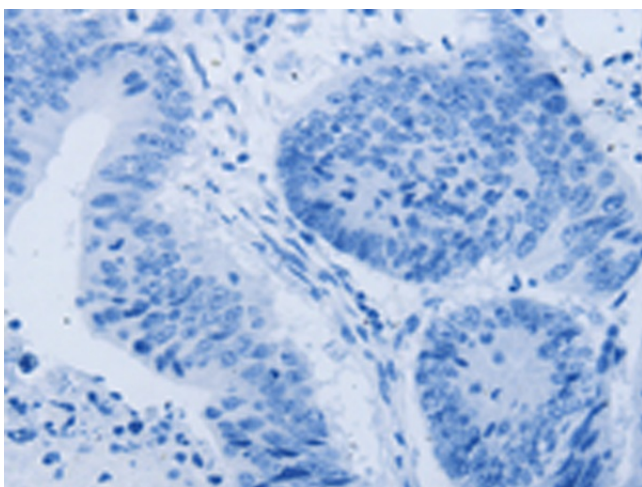
Druggable Genome, Protease

**Product images:**


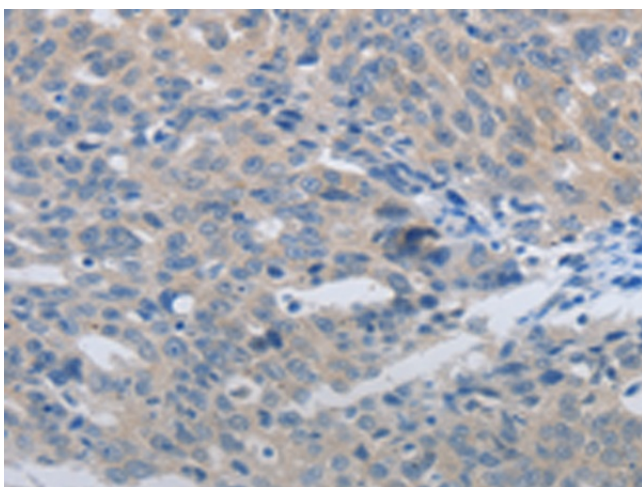
Gel: 8%SDS-PAGE  
Lysate: 40 µg  
Lane: 231 cells  
Primary antibody: [TA321482] (MMP8 Antibody)  
at dilution 1/800  
Secondary antibody: Goat anti rabbit IgG at  
1/8000 dilution  
Exposure time: 10 seconds



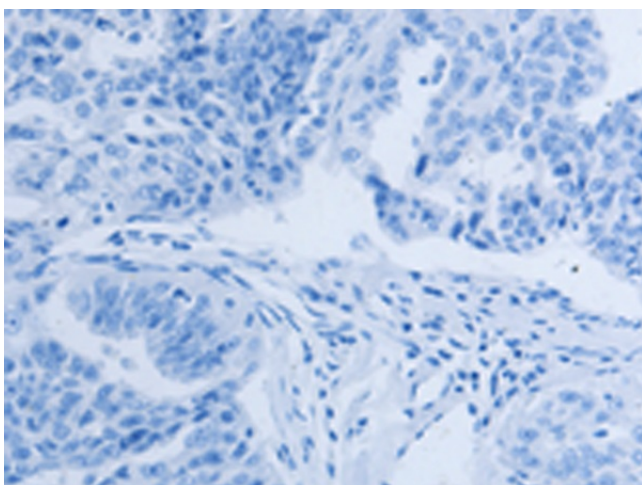
Immunohistochemistry of paraffin-embedded  
Human colon cancer tissue using [TA321482]  
(MMP8 Antibody) at dilution 1/45 (Original  
magnification: ×200)



Immunohistochemistry of paraffin-embedded Human colon cancer tissue using [TA321482] (MMP8 Antibody) at dilution 1/45, treated with synthetic peptide. (Original magnification: ×200)



Immunohistochemistry of paraffin-embedded Human ovarian cancer tissue using [TA321482] (MMP8 Antibody) at dilution 1/45 (Original magnification: ×200)



Immunohistochemistry of paraffin-embedded Human ovarian cancer tissue using [TA321482] (MMP8 Antibody) at dilution 1/45, treated with synthetic peptide. (Original magnification: ×200)