

## Product datasheet for **TA321482**

### MMP8 Rabbit Polyclonal Antibody

#### Product data:

|                                |   |
|--------------------------------|---|
| <b>Product Type:</b>           | Primary Antibodies  |
| <b>Applications:</b>           | IHC, WB   |
| <b>Recommended Dilution:</b>   | WB: 500–2000<br>WB positive control: 231 cells<br>IHC: 25–100<br>Positive control: Human colon cancer<br>Predicted cell location: Cytoplasm |
| <b>Reactivity:</b>             | Human   |
| <b>Host:</b>                   | Rabbit  |
| <b>Isotype:</b>                | IgG   |
| <b>Clonality:</b>              | Polyclonal  |
| <b>Immunogen:</b>              | Synthetic peptide corresponding to a region derived from 122–135 amino acids of human matrix metalloproteinase 8 (neutrophil collagenase)   |
| <b>Formulation:</b>            | PBS pH7.3, 0.05% NaN <sub>3</sub> , 50% glycerol  |
| <b>Concentration:</b>          | lot specific  |
| <b>Purification:</b>           | Antigen affinity purification   |
| <b>Conjugation:</b>            | Unconjugated  |
| <b>Storage:</b>                | Store at –20°C as received.   |
| <b>Stability:</b>              | Stable for 12 months from date of receipt.  |
| <b>Predicted Protein Size:</b> | 53 kDa  |
| <b>Gene Name:</b>              | matrix metalloproteinase 8  |
| <b>Database Link:</b>          | <a href="#">NP_002415</a><br><a href="#">Entrez Gene 4317 Human</a><br><a href="#">P22894</a>   |



**Background:**

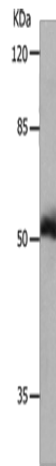
Proteins of the matrix metalloproteinase (MMP) family are involved in the breakdown of extracellular matrix in normal physiological processes; such as embryonic development; reproduction; and tissue remodeling; as well as in disease processes; such as arthritis and metastasis. Most MMP's are secreted as inactive proproteins which are activated when cleaved by extracellular proteinases. However; the enzyme encoded by this gene is stored in secondary granules within neutrophils and is activated by autolytic cleavage. Its function is degradation of type I; II and III collagens. The gene is part of a cluster of MMP genes which localize to chromosome 11q22.3.

**Synonyms:**

CLG1; HNC; MMP-8; PMNL-CL

**Protein Families:**

Druggable Genome, Protease

**Product images:**

Gel: 8%SDS-PAGE

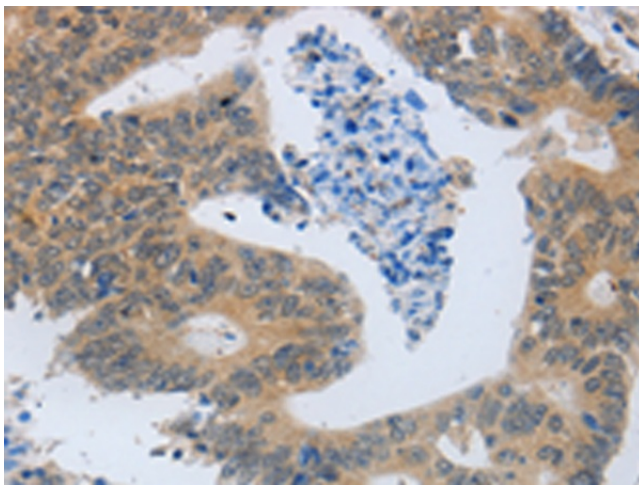
Lysate: 40 µg

Lane: 231 cells

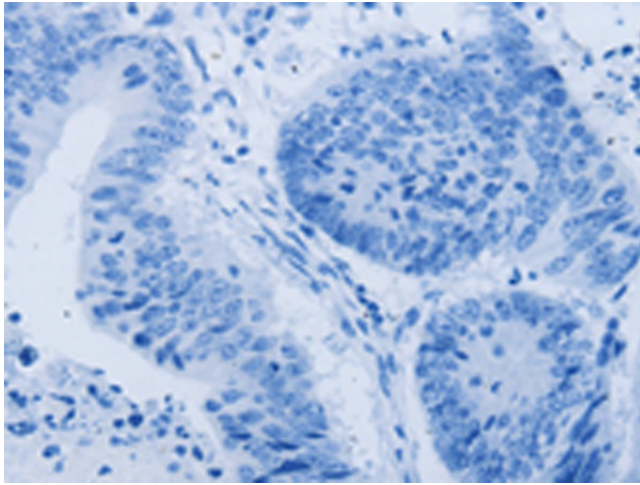
Primary antibody: TA321482 (MMP8 Antibody)  
at dilution 1/800

Secondary antibody: Goat anti rabbit IgG at  
1/8000 dilution

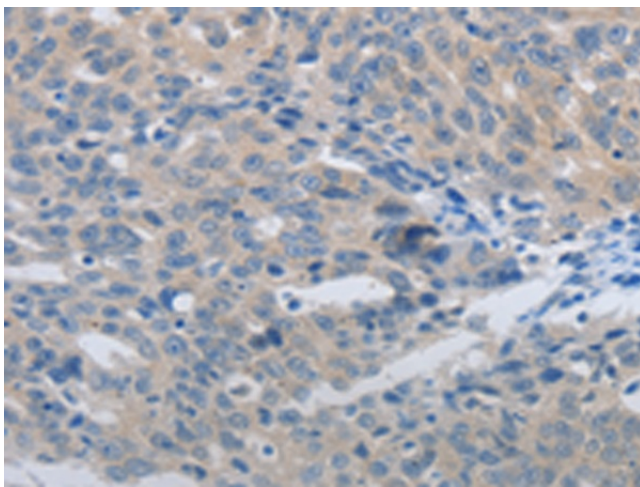
Exposure time: 10 seconds



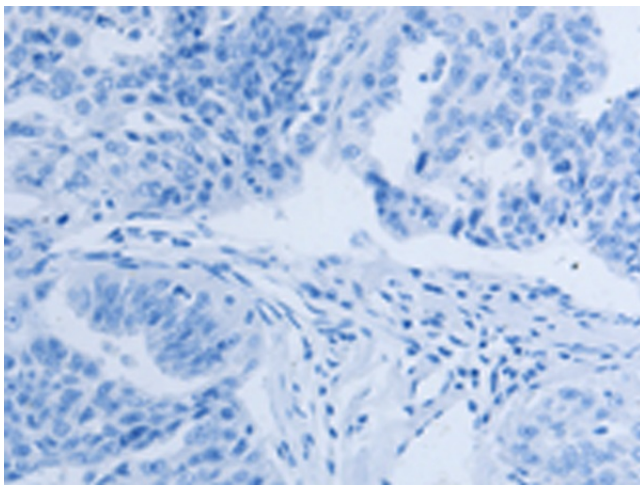
Immunohistochemistry of paraffin-  
embedded Human colon cancer tissue using  
TA321482 (MMP8 Antibody) at dilution 1/45  
(Original magnification: ×200)



Immunohistochemistry of paraffin-embedded Human colon cancer tissue using TA321482 (MMP8 Antibody) at dilution 1/45, treated with synthetic peptide. (Original magnification:  $\times 200$ )



Immunohistochemistry of paraffin-embedded Human ovarian cancer tissue using TA321482 (MMP8 Antibody) at dilution 1/45 (Original magnification:  $\times 200$ )



Immunohistochemistry of paraffin-embedded Human ovarian cancer tissue using TA321482 (MMP8 Antibody) at dilution 1/45, treated with synthetic peptide. (Original magnification:  $\times 200$ )