

Product datasheet for **TA321471**

LOX Rabbit Polyclonal Antibody

Product data:

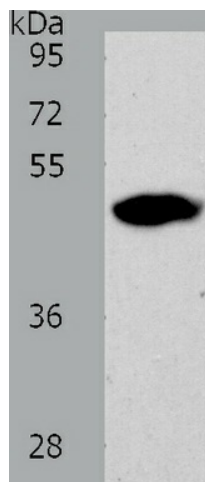
Product Type:	Primary Antibodies
Applications:	IHC, WB
Recommended Dilution:	ELISA: 1:2000-10000, WB: 1:500-2000, IHC: 1:25-100
Reactivity:	Human, Mouse, Rat
Host:	Rabbit
Isotype:	IgG
Clonality:	Polyclonal
Immunogen:	Synthetic peptide corresponding to a region derived from 326-339 amino acids of Human lysyl oxidase
Formulation:	PBS pH7.3, 0.05% NaN ₃ , 50% glycerol
Concentration:	lot specific
Purification:	Antigen affinity purification
Conjugation:	Unconjugated
Storage:	Store at -20°C as received.
Stability:	Stable for 12 months from date of receipt.
Predicted Protein Size:	47 kDa
Gene Name:	lysyl oxidase
Database Link:	NP_002308 Entrez Gene 16948 MouseEntrez Gene 24914 RatEntrez Gene 4015 Human P28300
Background:	The protein encoded by this gene is an extracellular copper enzyme that initiates the crosslinking of collagens and elastin. The enzyme catalyzes oxidative deamination of the epsilon-amino group in certain lysine and hydroxylysine residues of collagens and lysine residues of elastin. In addition to crosslinking extracellular matrix proteins, the encoded protein may have a role in tumor suppression. Defects in this gene are a cause of autosomal recessive cutis laxa type I (CL type I). Two transcript variants encoding different isoforms have been found for this gene.
Synonyms:	MGC105112



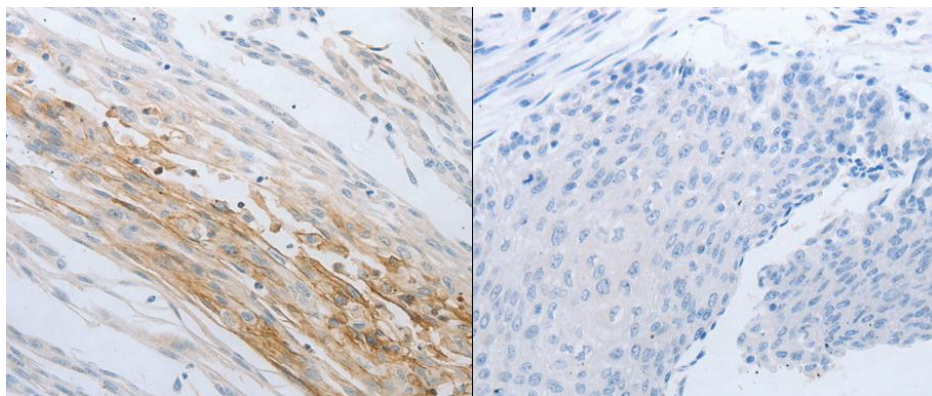
[View online »](#)

Protein Families: Druggable Genome, Secreted Protein

Product images:



Predicted band size: 47kDa. Positive control: 293T cell lysate. Recommended dilution: 1/500-2000. (Gel: 10%SDS-PAGE Lysate: 60 ug Primary antibody: 1/500 dilution Secondary antibody: Goat anti Rabbit IgG - H&L (HRP) at 1/8000 dilution Exposure time: 1 minute)



Predicted cell location: Cytoplasm. Positive control: Human cervical cancer tissue. Recommended dilution: 1/25-100 The image on the left is immunohistochemistry of paraffin-embedded human cervical cancer tissue using LOX antibody at dilution 1/30, on the right is treated with the synthetic peptide. (Original magnification:x200)