

## Product datasheet for **TA321466**

### Galectin 1 (LGALS1) Rabbit Polyclonal Antibody

#### Product data:

Product Type:	Primary Antibodies
Applications:	IHC, WB
Recommended Dilution:	WB: 500-2000 WB positive control: Hela cells IHC: 25-100 Positive control: Human cervical cancer Predicted cell location: Cytoplasm, Nucleus
Reactivity:	Human, Mouse, Rat
Host:	Rabbit
Isotype:	IgG
Clonality:	Polyclonal
Immunogen:	Full length fusion protein
Formulation:	PBS pH7.3, 0.05% NaN <sub>3</sub> , 50% glycerol
Concentration:	lot specific
Purification:	Antigen affinity purification
Conjugation:	Unconjugated
Storage:	Store at -20°C as received.
Stability:	Stable for 12 months from date of receipt.
Predicted Protein Size:	15 kDa
Gene Name:	galectin 1
Database Link:	<a href="#">NP_002296</a> <a href="#">Entrez Gene 16852 Mouse</a> <a href="#">Entrez Gene 56646 Rat</a> <a href="#">Entrez Gene 3956 Human</a> <a href="#">P09382</a>

**Background:** The galectins are a family of beta-galactoside-binding proteins implicated in modulating cell-cell and cell-matrix interactions. This gene product may act as an autocrine negative growth factor that regulates cell proliferation. May regulate apoptosis; cell proliferation and cell differentiation. Binds beta-galactoside and a wide array of complex carbohydrates. Inhibits CD45 protein phosphatase activity and therefore the dephosphorylation of Lyn kinase.

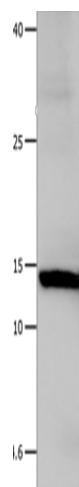


[View online »](#)

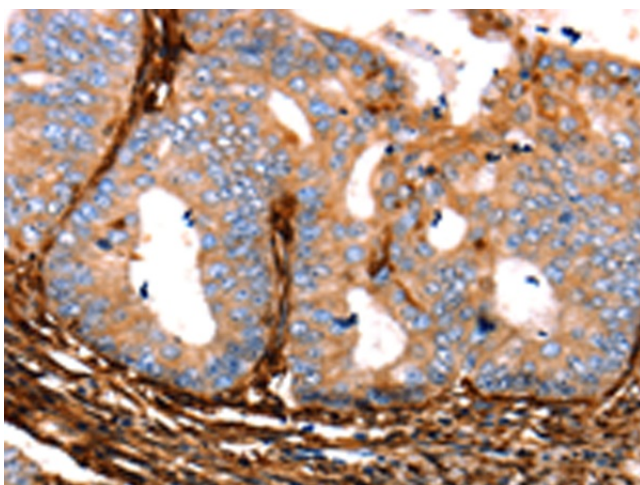
Synonyms: GAL1; GBP

Protein Families: Druggable Genome

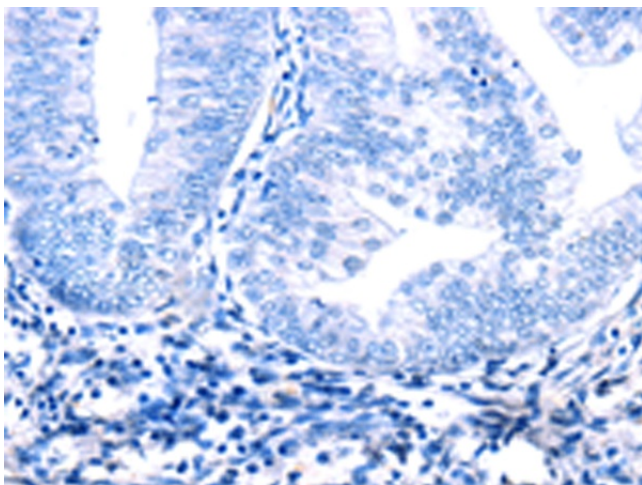
### Product images:



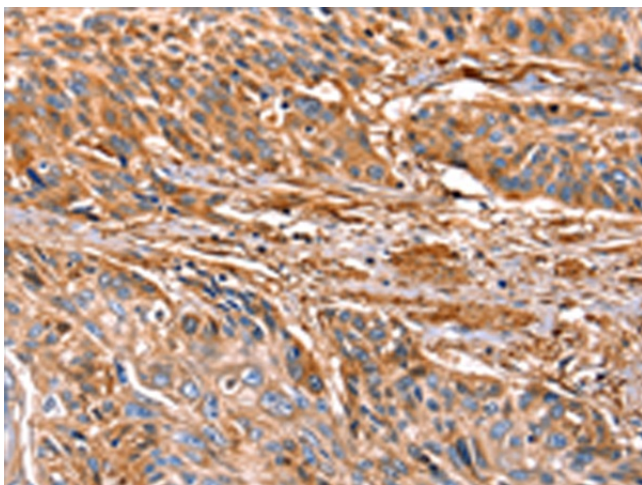
Gel: 12+15%SDS-PAGE  
Lysate: 40  $\mu$ g  
Lane: Hela cells  
Primary antibody: TA321466 (LGALS1 Antibody)  
at dilution 1/500  
Secondary antibody: Goat anti rabbit IgG at  
1/8000 dilution  
Exposure time: 10 seconds



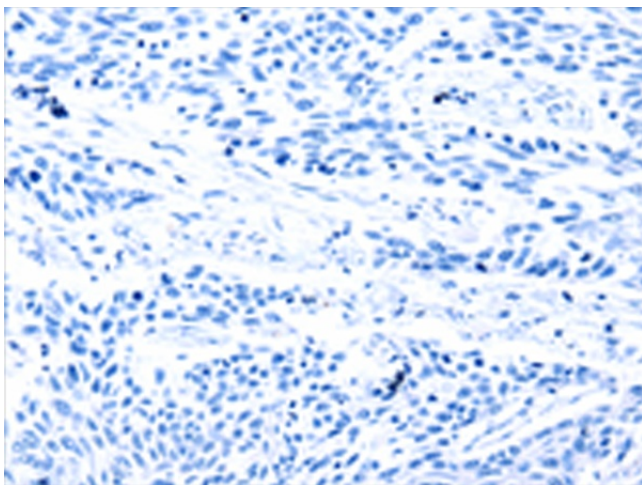
Immunohistochemistry of paraffin-embedded  
Human cervical cancer tissue using TA321466  
(LGALS1 Antibody) at dilution 1/25 (Original  
magnification:  $\times$ 200)



Immunohistochemistry of paraffin-embedded Human cervical cancer tissue using TA321466 (LGALS1 Antibody) at dilution 1/25, treated with fusion protein. (Original magnification:  $\times 200$ )



Immunohistochemistry of paraffin-embedded Human esophagus cancer tissue using TA321466 (LGALS1 Antibody) at dilution 1/25 (Original magnification:  $\times 200$ )



Immunohistochemistry of paraffin-embedded Human esophagus cancer tissue using TA321466 (LGALS1 Antibody) at dilution 1/25, treated with fusion protein. (Original magnification:  $\times 200$ )