

## Product datasheet for **TA321465**

### Leptin Receptor (LEPR) Rabbit Polyclonal Antibody

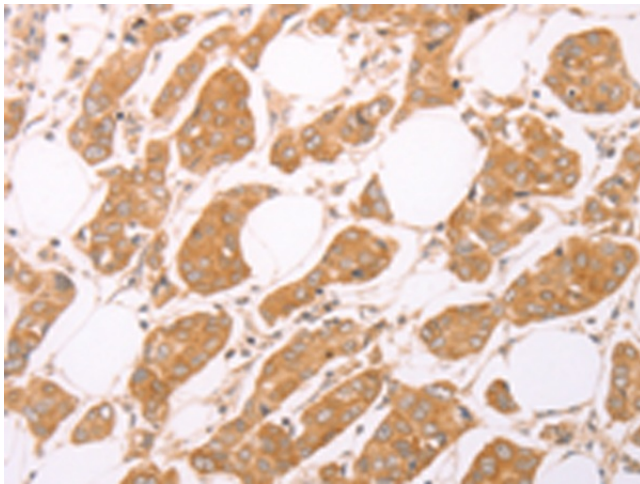
#### Product data:

Product Type:	Primary Antibodies
Applications:	IHC
Recommended Dilution:	IHC: 25-100 Positive control: Human breast cancer Predicted cell location: Cytoplasm
Reactivity:	Human
Host:	Rabbit
Isotype:	IgG
Clonality:	Polyclonal
Immunogen:	Synthetic peptide corresponding to a region derived from 585-597 amino acids of human leptin receptor
Formulation:	PBS pH7.3, 0.05% NaN <sub>3</sub> , 50% glycerol
Concentration:	lot specific
Purification:	Antigen affinity purification
Conjugation:	Unconjugated
Storage:	Store at -20°C as received.
Stability:	Stable for 12 months from date of receipt.
Gene Name:	leptin receptor
Database Link:	<a href="#">NP_002294</a> <a href="#">Entrez Gene 3953 Human</a> <a href="#">P48357</a>

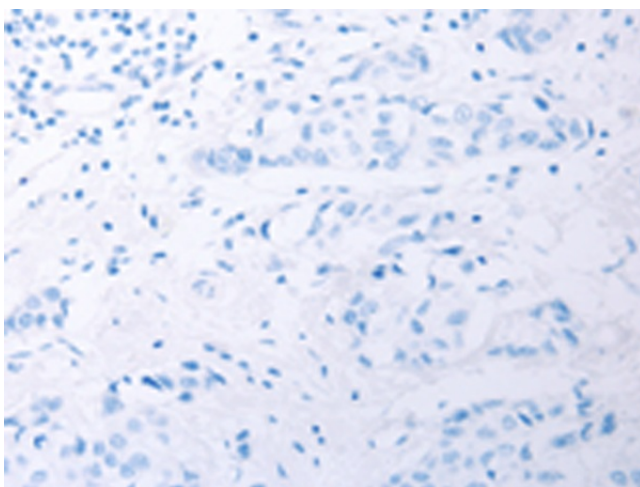


[View online »](#)

<b>Background:</b>	The protein encoded by this gene belongs to the gp130 family of cytokine receptors that are known to stimulate gene transcription via activation of cytosolic STAT proteins. This protein is a receptor for leptin (an adipocyte-specific hormone that regulates body weight); and is involved in the regulation of fat metabolism; as well as in a novel hematopoietic pathway that is required for normal lymphopoiesis. Mutations in this gene have been associated with obesity and pituitary dysfunction. Alternatively spliced transcript variants encoding different isoforms have been described for this gene. It is noteworthy that this gene and LEPROT gene (GeneID:54741) share the same promoter and the first 2 exons; however; encode distinct proteins (PMID:9207021).
<b>Synonyms:</b>	CD295; LEP-R; LEPRD; OB-R; OBR
<b>Protein Families:</b>	Druggable Genome, Secreted Protein, Transmembrane
<b>Protein Pathways:</b>	Adipocytokine signaling pathway, Cytokine-cytokine receptor interaction, Jak-STAT signaling pathway, Neuroactive ligand-receptor interaction

**Product images:**

Immunohistochemistry of paraffin-embedded Human breast cancer tissue using TA321465 (LEPR(S/L) Antibody) at dilution 1/25 (Original magnification: ×200)



Immunohistochemistry of paraffin-embedded Human breast cancer tissue using TA321465 (LEPR(S/L) Antibody) at dilution 1/25, treated with synthetic peptide. (Original magnification:  $\times 200$ )