

## Product datasheet for TA321459

### VEGF Receptor 2 (KDR) Rabbit Polyclonal Antibody

#### Product data:

Product Type:	Primary Antibodies
Applications:	IHC, WB
Recommended Dilution:	WB: 200-1000 WB positive control: Rat brain tissue IHC: 50-200 Positive control: Human colon cancer Predicted cell location: Cytoplasm,Cell membrane
Reactivity:	Human, Mouse, Rat
Host:	Rabbit
Isotype:	IgG
Clonality:	Polyclonal
Immunogen:	Synthetic peptide corresponding to a region derived from 1163-1176 amino acids of human kinase insert domain receptor (a type III receptor tyrosine kinase)
Formulation:	PBS pH7.3, 0.05% NaN <sub>3</sub> , 50% glycerol
Concentration:	lot specific
Purification:	Antigen affinity purification
Conjugation:	Unconjugated
Storage:	Store at -20°C as received.
Stability:	Stable for 12 months from date of receipt.
Predicted Protein Size:	152 kDa
Gene Name:	kinase insert domain receptor
Database Link:	<a href="#">NP_002244</a> <a href="#">Entrez Gene 16542 Mouse</a> <a href="#">Entrez Gene 25589 Rat</a> <a href="#">Entrez Gene 3791 Human</a> <a href="#">P35968</a>


[View online »](#)

**Background:**

Vascular endothelial growth factor (VEGF) is a major growth factor for endothelial cells. This gene encodes one of the two receptors of the VEGF. This receptor; known as kinase insert domain receptor; is a type III receptor tyrosine kinase. It functions as the main mediator of VEGF-induced endothelial proliferation; survival; migration; tubular morphogenesis and sprouting. The signalling and trafficking of this receptor are regulated by multiple factors; including Rab GTPase; P2Y purine nucleotide receptor; integrin alphaVbeta3; T-cell protein tyrosine phosphatase; etc.. Mutations of this gene are implicated in infantile capillary hemangiomas.?

**Synonyms:**

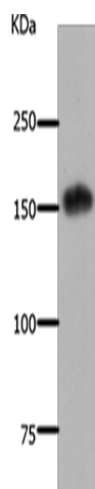
CD309; FLK1; VEGFR; VEGFR2

**Protein Families:**

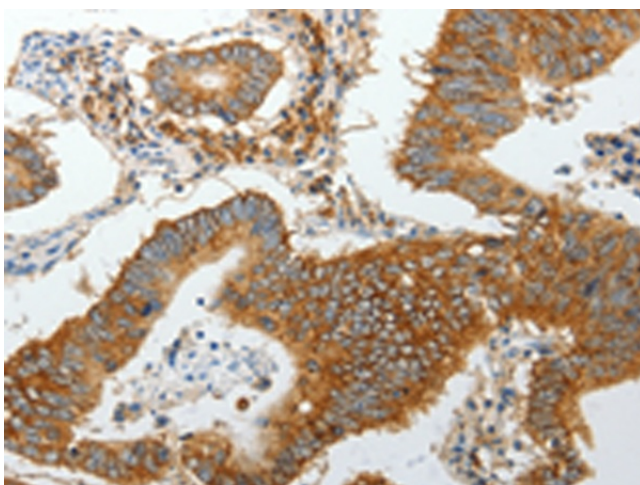
Druggable Genome, ES Cell Differentiation/IPS, Protein Kinase, Transmembrane

**Protein Pathways:**

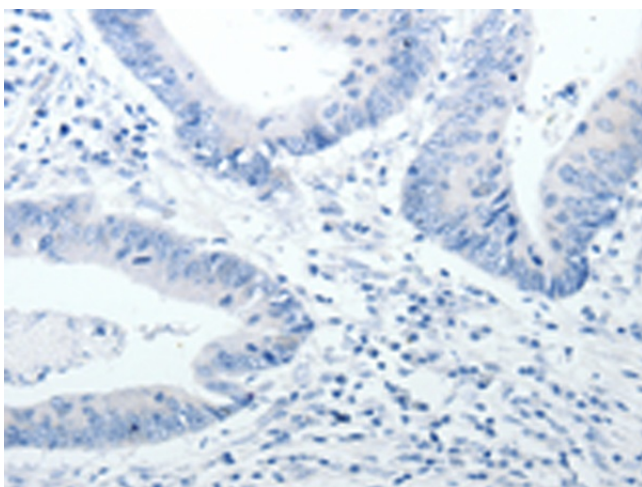
Cytokine-cytokine receptor interaction, Endocytosis, Focal adhesion, VEGF signaling pathway

**Product images:**


Gel: 8%SDS-PAGE  
Lysate: 40 µg  
Lane: Rat brain tissue  
Primary antibody: TA321459 (KDR Antibody) at dilution 1/200  
Secondary antibody: Goat anti rabbit IgG at 1/8000 dilution  
Exposure time: 1 minute



Immunohistochemistry of paraffin-embedded Human colon cancer tissue using TA321459 (KDR Antibody) at dilution 1/30 (Original magnification: ×200)



Immunohistochemistry of paraffin-embedded Human colon cancer tissue using TA321459 (KDR Antibody) at dilution 1/30, treated with synthetic peptide. (Original magnification: ×200)