

Product datasheet for **TA321450**

gamma Catenin (JUP) Rabbit Polyclonal Antibody

Product data:

Product Type:	Primary Antibodies
Applications:	IHC
Recommended Dilution:	IHC: 25-100 Positive control: Human esophagus cancer Predicted cell location: Cell membrane
Reactivity:	Human, Mouse, Rat
Host:	Rabbit
Isotype:	IgG
Clonality:	Polyclonal
Immunogen:	Synthetic peptide corresponding to a region derived from 708-722 amino acids of Human junction plakoglobin
Formulation:	PBS pH7.3, 0.05% NaN ₃ , 50% glycerol
Concentration:	lot specific
Purification:	Antigen affinity purification
Conjugation:	Unconjugated
Storage:	Store at -20°C as received.
Stability:	Stable for 12 months from date of receipt.
Gene Name:	junction plakoglobin
Database Link:	NP_002221 Entrez Gene 16480 MouseEntrez Gene 81679 RatEntrez Gene 3728 Human P14923
Background:	This gene encodes a major cytoplasmic protein which is the only known constituent common to submembranous plaques of both desmosomes and intermediate junctions. This protein forms distinct complexes with cadherins and desmosomal cadherins and is a member of the catenin family since it contains a distinct repeating amino acid motif called the armadillo repeat. Mutation in this gene has been associated with Naxos disease. Alternative splicing occurs in this gene; however; not all transcripts have been fully described.
Synonyms:	ARVD12; CTNNG; DP3; DPIII; PDGB; PKGB

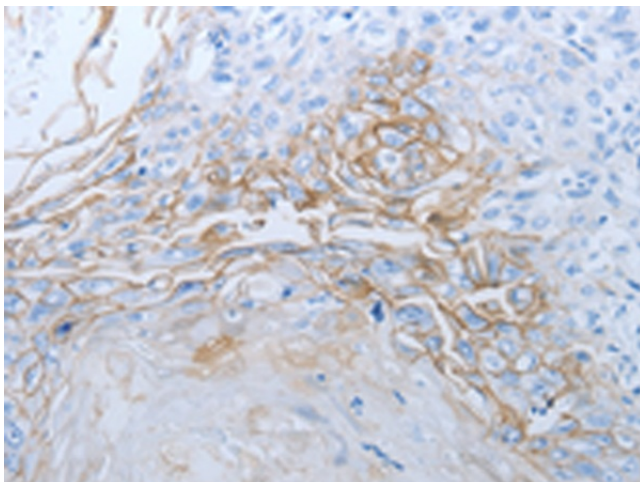


[View online »](#)

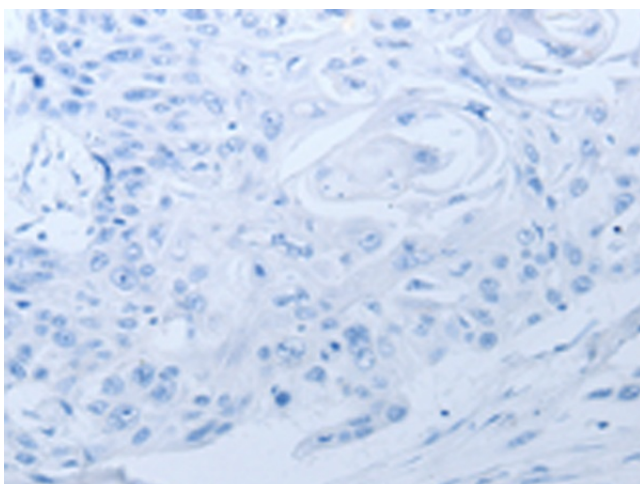
Protein Families: Druggable Genome

Protein Pathways: Acute myeloid leukemia, Arrhythmogenic right ventricular cardiomyopathy (ARVC), Pathways in cancer

Product images:



Immunohistochemistry of paraffin-embedded Human esophagus cancer tissue using TA321450 (JUP Antibody) at dilution 1/20 (Original magnification: $\times 200$)



Immunohistochemistry of paraffin-embedded Human esophagus cancer tissue using TA321450 (JUP Antibody) at dilution 1/20, treated with synthetic peptide. (Original magnification: $\times 200$)