

Product datasheet for **TA321448S**

Aconitase 1 (ACO1) Rabbit Polyclonal Antibody

Product data:

Product Type:	Primary Antibodies
Applications:	IHC
Recommended Dilution:	IHC: 50-200 Positive control: Human liver cancer Predicted cell location: Cytoplasm
Reactivity:	Human, Mouse, Rat
Host:	Rabbit
Isotype:	IgG
Clonality:	Polyclonal
Immunogen:	Synthetic peptide corresponding to a region derived from 132-146 amino acids of human aconitase 1, soluble
Formulation:	PBS pH7.3, 0.05% NaN ₃ , 50% glycerol
Purification:	Antigen affinity purification
Conjugation:	Unconjugated
Storage:	Store at -20°C as received.
Stability:	Stable for 12 months from date of receipt.
Gene Name:	aconitase 1
Database Link:	NP_002188 Entrez Gene 11428 Mouse Entrez Gene 50655 Rat Entrez Gene 48 Human P21399
Background:	Aconitase 1; also known as iron regulatory element binding protein 1 (IREB1); is a cytosolic protein which binds to iron-responsive elements (IREs). IREs are stem-loop structures found in the 5' UTR of ferritin mRNA; and in the 3' UTR of transferrin receptor mRNA. The iron-induced binding to the IRE results in repression of translation of ferritin mRNA; and inhibition of degradation of the otherwise rapidly degrading transferrin receptor mRNA. Thus; IREB1 plays a central role in cellular iron homeostasis. It was also shown to have aconitase activity; and hence grouped with the aconitase family of enzymes.
Synonyms:	ACONS; HEL60; IREB1; IREBP; IREBP1; IRP1

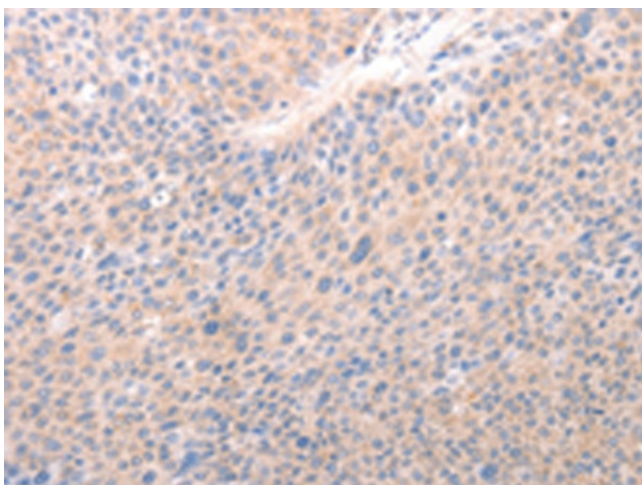


[View online »](#)

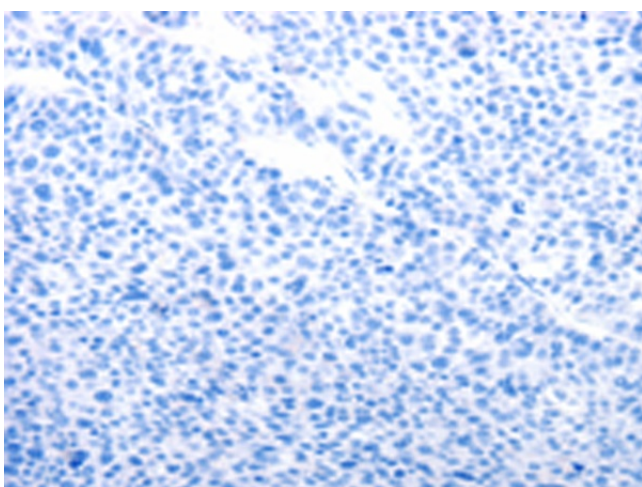
Protein Families: Druggable Genome

Protein Pathways: Citrate cycle (TCA cycle), Glyoxylate and dicarboxylate metabolism, Metabolic pathways

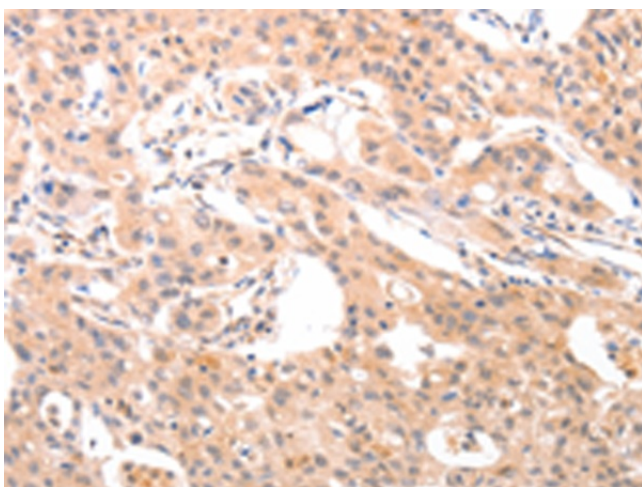
Product images:



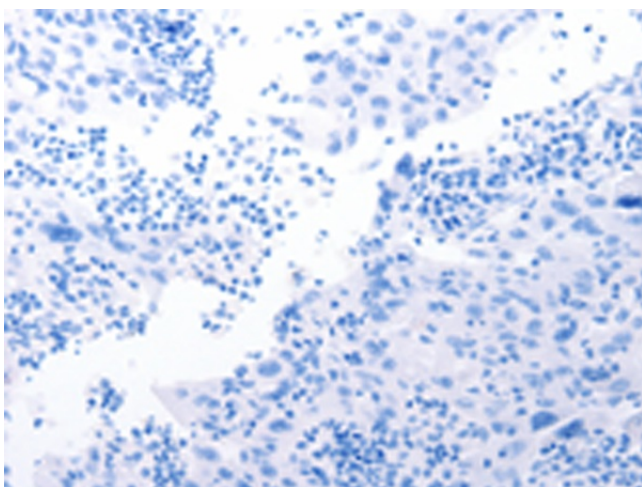
Immunohistochemistry of paraffin-embedded Human liver cancer tissue using [TA321448] (ACO1 Antibody) at dilution 1/50 (Original magnification: $\times 200$)



Immunohistochemistry of paraffin-embedded Human liver cancer tissue using [TA321448] (ACO1 Antibody) at dilution 1/50, treated with synthetic peptide. (Original magnification: $\times 200$)



Immunohistochemistry of paraffin-embedded Human lung cancer tissue using [TA321448] (ACO1 Antibody) at dilution 1/50 (Original magnification: $\times 200$)



Immunohistochemistry of paraffin-embedded Human lung cancer tissue using [TA321448] (ACO1 Antibody) at dilution 1/50, treated with synthetic peptide. (Original magnification: $\times 200$)