

Product datasheet for **TA321447S**

Inhibin beta A (INHBA) Rabbit Polyclonal Antibody

Product data:

| | |
|-------------------------|---|
| Product Type: | Primary Antibodies |
| Applications: | WB |
| Recommended Dilution: | WB: 1000-2000 WB positive control: Mouse fat tissue |
| Reactivity: | Human, Mouse, Rat |
| Host: | Rabbit |
| Isotype: | IgG |
| Clonality: | Polyclonal |
| Immunogen: | Synthetic peptide corresponding to a region derived from 375-390 amino acids of Human Inhibin beta A chain |
| Formulation: | PBS pH7.3, 0.05% NaN ₃ , 50% glycerol |
| Purification: | Antigen affinity purification |
| Conjugation: | Unconjugated |
| Storage: | Store at -20°C as received. |
| Stability: | Stable for 12 months from date of receipt. |
| Predicted Protein Size: | 47 kDa |
| Gene Name: | inhibin beta A subunit |
| Database Link: | NP_002183 Entrez Gene 16323 Mouse Entrez Gene 29200 Rat Entrez Gene 3624 Human P08476 |



[View online »](#)

Background:

The inhibin beta A subunit joins the alpha subunit to form a pituitary FSH secretion inhibitor. Inhibin has been shown to regulate gonadal stromal cell proliferation negatively and to have tumor-suppressor activity. In addition; serum levels of inhibin have been shown to reflect the size of granulosa-cell tumors and can therefore be used as a marker for primary as well as recurrent disease. Because expression in gonadal and various extragonadal tissues may vary severalfold in a tissue-specific fashion; it is proposed that inhibin may be both a growth/differentiation factor and a hormone. Furthermore; the beta A subunit forms a homodimer; activin A; and also joins with a beta B subunit to form a heterodimer; activin AB; both of which stimulate FSH secretion. Finally; it has been shown that the beta A subunit mRNA is identical to the erythroid differentiation factor subunit mRNA and that only one gene for this mRNA exists in the human genome.

Synonyms:

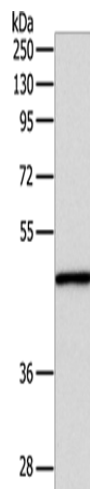
EDF; FRP

Protein Families:

Druggable Genome, Secreted Protein

Protein Pathways:

Cytokine-cytokine receptor interaction, TGF-beta signaling pathway

Product images:

Gel: 8+10%SDS-PAGE
Lysate: 30 µg
Lane: Mouse fat tissue
Primary antibody: [TA321447] (INHBA Antibody)
at dilution 1/1000
Secondary antibody: Goat anti rabbit IgG at
1/8000 dilution
Exposure time: 10 seconds