

Product datasheet for **TA321446**

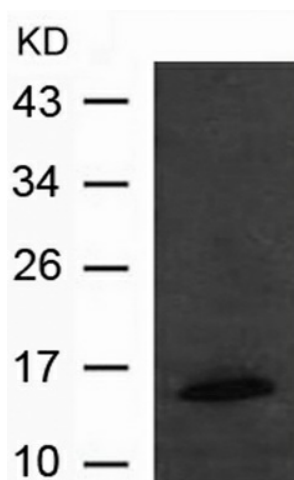
ID2 Rabbit Polyclonal Antibody

Product data:

Product Type:	Primary Antibodies
Applications:	WB
Recommended Dilution:	WB: 1:500-1000
Reactivity:	Human, Mouse, Rat
Host:	Rabbit
Isotype:	IgG
Clonality:	Polyclonal
Immunogen:	Peptide sequence around aa.5~9(S-P-V-R-S) derived from Human Id2.
Formulation:	PBS pH7.3, 0.05% NaN ₃ , 50% glycerol
Concentration:	lot specific
Purification:	Antigen affinity purification
Conjugation:	Unconjugated
Storage:	Store at -20°C as received.
Stability:	Stable for 12 months from date of receipt.
Predicted Protein Size:	15 kDa
Gene Name:	inhibitor of DNA binding 2, HLH protein
Database Link:	NP_002157 Entrez Gene 15902 MouseEntrez Gene 25587 RatEntrez Gene 3398 Human Q02363
Background:	ID (inhibitor of DNA binding) HLH proteins lack a basic DNA-binding domain but are able to form heterodimers with other HLH proteins, thereby inhibiting DNA binding. ID-2 may be an inhibitor of tissue-specific gene expression.
Synonyms:	bHLHb26; GIG8; ID2A; ID2H
Protein Families:	ES Cell Differentiation/IPS, Stem cell relevant signaling - TGFb/BMP signaling pathway, Transcription Factors
Protein Pathways:	TGF-beta signaling pathway



[View online »](#)

Product images:

Predicted band size: 15 kDa. Positive control: Mouse heart tissue lysate. Recommended dilution: 1/ 500-1000. (Gel: 12%SDS-PAGE Lysate: 30 ug Primary antibody: 1/500 dilution Secondary antibody: Goat anti Rabbit IgG - H&L (HRP) at 1/10000 dilution Exposure time: 1 minute)