

Product datasheet for **TA321439**

hnRNP A1 (HNRNPA1) Rabbit Polyclonal Antibody

Product data:

Product Type:	Primary Antibodies
Applications:	WB
Recommended Dilution:	WB: 1:500-1000
Reactivity:	Human, Mouse, Rat
Host:	Rabbit
Isotype:	IgG
Clonality:	Polyclonal
Immunogen:	Peptide sequence around aa.190~194(S-S-S-Q-R)derived from Human hnRNP A1.
Formulation:	PBS pH7.3, 0.05% NaN ₃ , 50% glycerol
Concentration:	lot specific
Purification:	Antigen affinity purification
Conjugation:	Unconjugated
Storage:	Store at -20°C as received.
Stability:	Stable for 12 months from date of receipt.
Predicted Protein Size:	39 kDa
Gene Name:	heterogeneous nuclear ribonucleoprotein A1
Database Link:	NP_002127 Entrez Gene 15382 MouseEntrez Gene 29578 RatEntrez Gene 3178 Human P09651



[View online »](#)

Background:

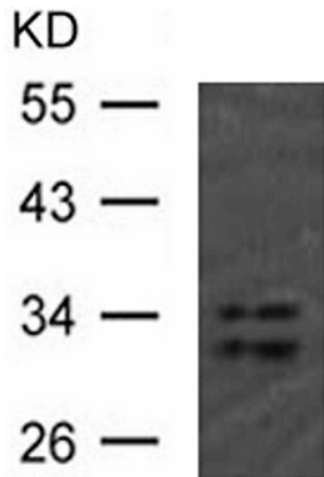
Heterogeneous nuclear ribonucleoprotein A1 (hnRNP A1) is a member of the hnRNP A/B family of related RNA binding proteins that bind pre-mRNA and are involved in the processing, metabolism and transport of nuclear pre-mRNA transcripts . hnRNP A1 regulates the alternative splicing of c-Src, c-H-Ras and modifies initiation of translation of the fibroblast growth factor 2 mRNA. hnRNP A1 expression level is elevated in many cancers; knockdown of hnRNP A1 leads to apoptosis in various cancer cells . Although predominantly nuclear, hnRNP A1 is continually transported from the nucleus to the cytoplasm where it disassociates from mRNA and is rapidly re-imported into the nucleus . hnRNP A1 binds to cis-acting repressive sequences (CRS) of HIV-1 to influence HIV-1 production . HIV-1 enhances hnRNP A1 expression and promotes the relocalization of hnRNP A1 to the cytoplasm

Synonyms:

ALS19; ALS20; hnRNP-A1; hnRNP A1; HNRPA1; HNRPA1L3; IBMPFD3; UP 1

Protein Pathways:

Spliceosome

Product images:

Predicted band size: 39 kDa. Positive control: 293 cells lysate. Recommended dilution: 1/ 500-1000. (Gel: 10%SDS-PAGE Lysate: 30 ug Primary antibody: 1/500 dilution Secondary antibody: Goat anti Rabbit IgG - H&L (HRP) at 1/10000 dilution Exposure time: 1 minute)