

Product datasheet for **TA321437**

Heme Oxygenase 1 (HMOX1) Rabbit Polyclonal Antibody

Product data:

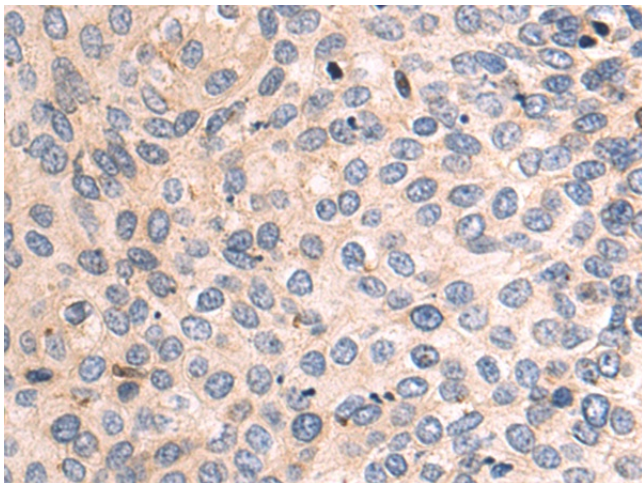
Product Type:	Primary Antibodies
Applications:	IHC
Recommended Dilution:	IHC: 50-200 Positive control: Human cervical cancer Predicted cell location: Cytoplasm
Reactivity:	Human, Mouse, Rat
Host:	Rabbit
Isotype:	IgG
Clonality:	Polyclonal
Immunogen:	Full length fusion protein
Formulation:	PBS pH7.3, 0.05% NaN ₃ , 50% glycerol
Concentration:	lot specific
Purification:	Antigen affinity purification
Conjugation:	Unconjugated
Storage:	Store at -20°C as received.
Stability:	Stable for 12 months from date of receipt.
Gene Name:	heme oxygenase 1
Database Link:	NP_002124 Entrez Gene 15368 Mouse Entrez Gene 24451 Rat Entrez Gene 3162 Human P09601
Background:	Heme oxygenase; an essential enzyme in heme catabolism; cleaves heme to form biliverdin; which is subsequently converted to bilirubin by biliverdin reductase; and carbon monoxide; a putative neurotransmitter. Heme oxygenase activity is induced by its substrate heme and by various nonheme substances. Heme oxygenase occurs as 2 isozymes; an inducible heme oxygenase-1 and a constitutive heme oxygenase-2. HMOX1 and HMOX2 belong to the heme oxygenase family.?
Synonyms:	bK286B10; HMOX1D; HO-1; HSP32
Protein Families:	Druggable Genome, Transmembrane



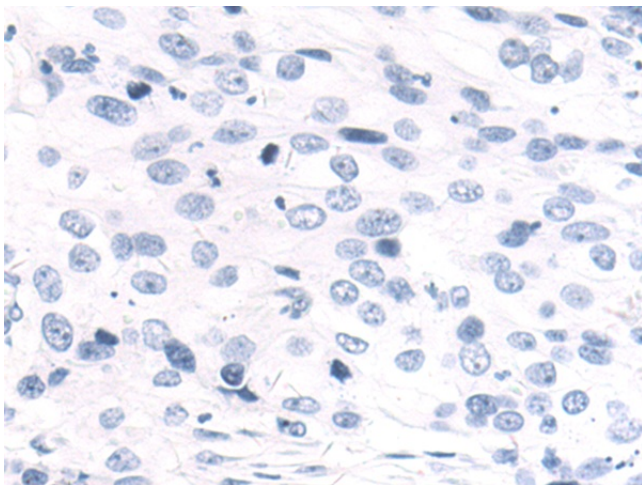
[View online »](#)

Protein Pathways: Porphyrin and chlorophyll metabolism

Product images:



Immunohistochemistry of paraffin-embedded Human lung cancer tissue using TA321437 (HMOX1 Antibody) at dilution 1/40 (Original magnification: $\times 200$)



Immunohistochemistry of paraffin-embedded Human lung cancer tissue using TA321437 (HMOX1 Antibody) at dilution 1/40, treated with fusion protein. (Original magnification: $\times 200$)